

**UNITED STATES DEPARTMENT OF AGRICULTURE**

Agricultural Marketing Service  
Dairy Programs

**FEDERAL MILK ORDERS 124 & 131**

1930-220<sup>th</sup> Street SE, Ste. 102  
Bothell, WA 98021  
Phone: (425) 487-6009  
Fax: (425) 487-2775  
Email: fmmaseattle@fmmaseattle.com

4835 E. Cactus Road, Ste. 365  
Scottsdale, AZ 85254  
Phone: (602) 547-2909  
Fax: (602) 547-2906

**OVERVIEW OF HAULING CHARGES BY  
LOCATION AND SIZE-RANGE OF PRODUCTION**

**PACIFIC NORTHWEST ORDER**

**MAY 2014 (with comparison to May of previous years)**

**November 2015**

The U.S. Department of Agriculture (USDA) prohibits discrimination in all its programs and activities on the basis of race, color, national origin, age, disability, and where applicable, sex, marital status, familial status, parental status, religion, sexual orientation, genetic information, political beliefs, reprisal, or because all or part of an individual's income is derived from any public assistance program. (Not all prohibited bases apply to all programs.) Persons with disabilities who require alternative means for communication of program information (Braille, large print, audiotape, etc.) should contact USDA's TARGET Center at (202) 720-2600 (voice and TDD). To file a complaint of discrimination, write to USDA, Director, Office of Civil Rights, 1400 Independence Avenue, S.W., Washington, D.C. 20250-9410, or call (800) 795-3272 (voice) or (202) 720-6382 (TDD). USDA is an equal opportunity provider and employer.

**OVERVIEW OF HAULING CHARGES BY  
LOCATION AND SIZE-RANGE OF PRODUCTION**

**PACIFIC NORTHWEST ORDER**

**MAY 2014 (with comparison to May of previous years)**

The following tables provide an overview of average hauling charges by State and County and size-range of production for the Pacific Northwest (FO 124) Federal Milk Marketing Order.

The data included in these tables comprises all producer milk pooled on the Pacific Northwest Order for the month of May. Hauling charges are based on producer payrolls submitted by handlers to the Market Administrator's office in Bothell, Washington. Several handlers identify a stop charge with, or in lieu of, a hauling charge. Stop charges were converted to a per hundredweight basis and added onto, if any, the normal per hundredweight charge. Note that the producer composition of each May's dataset can change from year to year.

An index of Tables can be found on page ii.

Index of Tables

	Page Number
Tables: T-1	Weighted Average Hauling Charges By State and County, Pacific Northwest Order: May 2013 and 2014 .....1
T-2	Cross Tabulation of <u>Number</u> of Producers Between Region and Hauling Charges, Pacific Northwest Order: May 2014 .....3
T-3	Cross Tabulation of <u>Percentage</u> of Producers Between Region and Hauling Charges, Pacific Northwest Order: May 2014 .....4
T-4	Cross Tabulation of <u>Number</u> of Producers Between Milk Production and Hauling Charges, Pacific Northwest Order: May 2014 .....5
T-5	Cross Tabulation of <u>Percentage</u> of Producers Between Milk Production and Hauling Charges, Pacific Northwest Order: May 2014 .....6
T-6	Average Hauling Charges and West Coast No. 2 Diesel Prices: 2009-2014 .....7

Table T-1  
 Weighted Average Hauling Charges By State and County 1/  
 Pacific Northwest Order  
 May 2013 and 2014

State & County	2013	2014	Change
- - Cents per Cwt - -			
<b>California</b>			
Siskiyou	59.66	52.73	(6.93)
Weighted Average	59.66	52.73	(6.93)
<b>Oregon</b>			
Benton	R	88.26	
Clackamas	51.10	44.95	(6.15)
Clatsop	46.14	46.26	0.12
Coos	4.64	3.81	(0.83)
Josephine	57.68	47.92	(9.76)
Klamath	53.11	45.84	(7.27)
Linn	82.60	78.89	(3.71)
Marion	52.30	49.83	(2.47)
Morrow	29.73	28.78	(0.95)
Polk	52.13	54.98	2.85
Tillamook	22.93	22.85	(0.08)
Umatilla	69.28	59.70	(9.58)
Washington	57.33	54.80	(2.53)
Restricted-OR 2/	52.94	46.62	(6.32)
Weighted Average	36.44	35.40	(1.04)
<b>Washington</b>			
Adams	75.48	68.67	(6.81)
Benton	67.28	58.39	(8.89)
Clark	24.58	23.90	(0.68)
Franklin	65.49	58.56	(6.93)
Grant	75.64	68.34	(7.30)
Grays Harbor	35.76	41.01	5.25
King	49.34	44.36	(4.98)
Klickitat	3.67	3.48	(0.19)
Lewis	59.71	58.22	(1.49)
Pacific	61.50	54.16	(7.34)
Skagit	51.16	45.52	(5.64)
Snohomish	55.04	47.96	(7.08)
Spokane	87.07	81.93	(5.14)
Stevens	95.90	91.19	(4.71)
Thurston	33.61	36.04	2.43
Wahkiakum	52.81	47.34	(5.47)
Whatcom	53.54	46.74	(6.80)
Yakima	68.96	62.65	(6.31)
Restricted-WA 3/	60.32	46.53	(13.79)
Weighted Average	63.43	57.20	(6.23)
<b>Pacific Northwest Order</b>	<b>56.45</b>	<b>51.58</b>	<b>(4.87)</b>

Table T-1  
 Weighted Average Hauling Charges By State and County 1/  
 Pacific Northwest Order  
 May 2013 and 2014

R = Restricted

1/ Data obtained from producer payrolls submitted by handlers. Producers with no recorded hauling charges are excluded.

2/ Restricted - OR

State	County	2013	2014
Oregon	Benton	X	
	Deschutes	X	X
	Jackson	X	X
	Lane	X	X
	Multnomah	X	X
	Yamhill	X	X

3/ Restricted - WA

State	County	2013	2014
Washington	Clallam	X	X
	Cowlitz	X	X
	Island	X	X
	Jefferson	X	X
	Kittitas	X	X
	Lincoln	X	X
	Pierce	X	X
Idaho	Bonner	X	X
	Franklin		X
	Latah	X	X
	Lincoln		X
Utah	Cache		X

Table T-2  
 Cross Tabulation of Number of Producers Between Region and Hauling Charges  
 Pacific Northwest Order  
 May 2014

		Hauling Charges (Cents per Cwt)											Weighted Average Rate	Minimum Rate	Maximum Rate	Standard Deviation
		Less than 10	10 to 20	20 to 30	30 to 40	40 to 50	50 to 60	60 to 70	70 to 80	80 to 100	Greater than 100	Total				
Region	----- Number of Producers -----															
	Western WA	17	7	2	11	81	65	22	17	17	10	249	45.70	2.71	316.01	36.70
	Eastern WA	3	-	-	-	-	44	36	12	15	16	126	63.16	1.83	146.35	21.23
	Western OR 1/	10	4	77	12	17	22	10	3	5	4	164	38.90	1.25	285.02	29.07
	Eastern OR	-	-	4	-	4	3	1	2	-	-	14	30.98	23.57	78.79	18.82
	ID & UT	3	1	1	-	-	-	-	-	2	-	7	25.66	4.64	91.75	37.57
Total		33	12	84	23	102	134	69	34	39	30	560	51.58	1.25	316.01	33.44

1/ Western Oregon region includes data for Siskiyou County, California.

3

Hauling Rates by Milk Production Region  
 May 2014

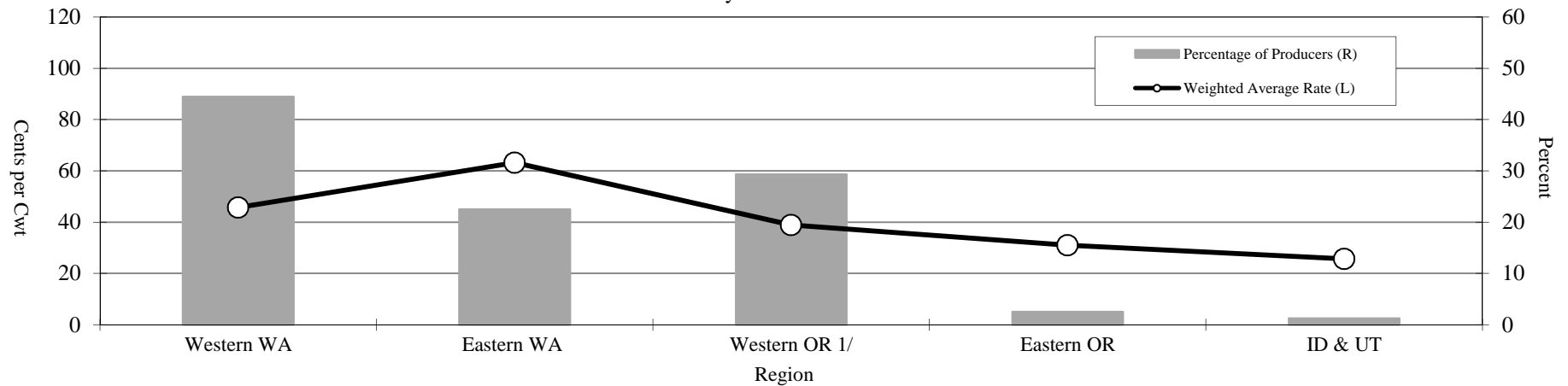


Table T-3  
 Cross Tabulation of Percentage of Producers Between Region and Hauling Charges  
 Pacific Northwest Order  
 May 2014

		Hauling Charges (Cents per Cwt)											Weighted Average Rate	Minimum Rate	Maximum Rate	Standard Deviation
		Less than 10	10 to 20	20 to 30	30 to 40	40 to 50	50 to 60	60 to 70	70 to 80	80 to 100	Greater than 100	Total 2/				
		----- Percent of Producers -----														
Region	Western WA	3.0	1.3	0.4	2.0	14.5	11.6	3.9	3.0	3.0	1.8	44.5	45.70	2.71	316.01	36.70
	Eastern WA	0.5	-	-	-	-	7.9	6.4	2.1	2.7	2.9	22.5	63.16	1.83	146.35	21.23
	Western OR 1/	1.8	0.7	13.8	2.1	3.0	3.9	1.8	0.5	0.9	0.7	29.3	38.90	1.25	285.02	29.07
	Eastern OR	-	-	0.7	-	0.7	0.5	0.2	0.4	-	-	2.5	30.98	23.57	78.79	18.82
	ID & UT	0.5	0.2	0.2	-	-	-	-	-	-	0.4	-	1.3	25.66	4.64	91.75
Total 2/		5.9	2.1	15.0	4.1	18.2	23.9	12.3	6.1	7.0	5.4	100.0	51.58	1.25	316.01	33.44

1/ Western Oregon region includes data for Siskiyou County, California.

2/ Total may not add due to rounding.

Table T-4  
 Cross Tabulation of Number of Producers Between Milk Production and Hauling Charges  
 Pacific Northwest Order  
 May 2014

		Hauling Charges (Cents per Cwt)											Total	Weighted Average Rate	Minimum Rate	Maximum Rate	Standard Deviation
		Less than 10	10 to 20	20 to 30	30 to 40	40 to 50	50 to 60	60 to 70	70 to 80	80 to 100	Greater than 100						
Milk Production (1,000 pounds)	Less than 50	-	-	-	2	1	-	-	-	-	10	13	142.16	32.34	316.01	97.62	
	50 to 100	-	3	8	3	1	-	1	1	11	7	35	65.39	18.54	119.44	35.92	
	100 to 200	1	9	17	1	-	4	12	17	8	4	73	53.25	9.89	108.00	29.07	
	200 to 300	17	-	6	3	3	20	6	3	7	-	65	44.02	6.43	92.56	27.22	
	300 to 400	3	-	7	2	2	14	2	2	2	-	34	45.76	4.64	81.40	21.51	
	400 to 500	4	-	10	1	1	9	2	2	1	-	30	39.47	3.64	81.32	23.09	
	500 to 600	-	-	9	-	5	11	5	1	1	-	32	47.18	20.75	80.49	16.76	
	600 to 700	2	-	5	1	12	3	5	-	-	1	29	45.21	2.59	113.22	21.41	
	700 to 1,000	4	-	7	-	20	14	4	1	3	-	53	45.62	1.83	99.22	20.23	
	1,000 to 3,000	2	-	10	8	52	24	22	7	3	8	136	53.92	1.25	131.65	20.90	
	More than 3,000	-	-	5	2	5	35	10	-	3	-	60	51.98	20.75	99.25	14.84	
Total	33	12	84	23	102	134	69	34	39	30	560	51.58	1.25	316.01	33.44		

Hauling Rates by Milk Production Range  
 May 2014

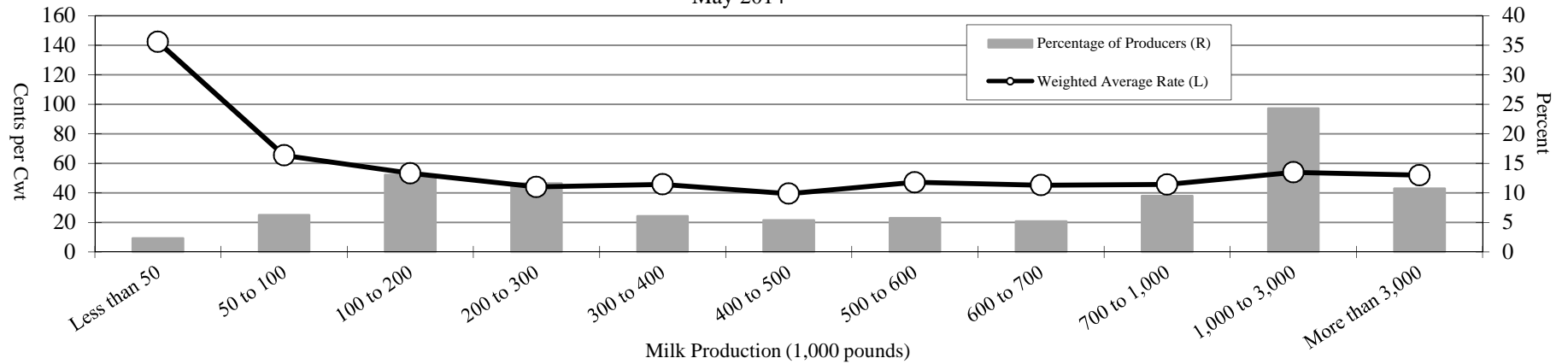




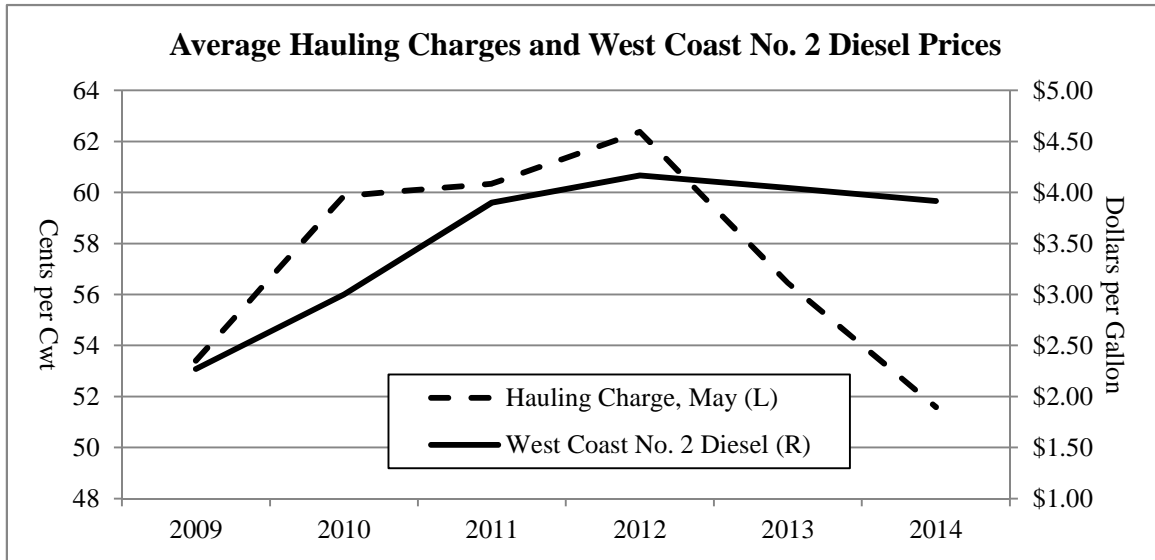
Table T-5  
 Cross Tabulation of Percentage of Producers Between Milk Production and Hauling Charges  
 Pacific Northwest Order  
 May 2014

		Hauling Charges (Cents per Cwt)											Weighted Average Rate	Minimum Rate	Maximum Rate	Standard Deviation
		Less than 10	10 to 20	20 to 30	30 to 40	40 to 50	50 to 60	60 to 70	70 to 80	80 to 100	Greater than 100	Total 1/				
		----- Percent of Producers -----														
Milk Production (1,000 pounds)	Less than 50	-	-	-	0.4	0.2	-	-	-	-	1.8	2.3	142.16	32.34	316.01	97.62
	50 to 100	-	0.5	1.4	0.5	0.2	-	0.2	0.2	2.0	1.3	6.3	65.39	18.54	119.44	35.92
	100 to 200	0.2	1.6	3.0	0.2	-	0.7	2.1	3.0	1.4	0.7	13.0	53.25	9.89	108.00	29.07
	200 to 300	3.0	-	1.1	0.5	0.5	3.6	1.1	0.5	1.3	-	11.6	44.02	6.43	92.56	27.22
	300 to 400	0.5	-	1.3	0.4	0.4	2.5	0.4	0.4	0.4	-	6.1	45.76	4.64	81.40	21.51
	400 to 500	0.7	-	1.8	0.2	0.2	1.6	0.4	0.4	0.2	-	5.4	39.47	3.64	81.32	23.09
	500 to 600	-	-	1.6	-	0.9	2.0	0.9	0.2	0.2	-	5.7	47.18	20.75	80.49	16.76
	600 to 700	0.4	-	0.9	0.2	2.1	0.5	0.9	-	-	0.2	5.2	45.21	2.59	113.22	21.41
	700 to 1,000	0.7	-	1.3	-	3.6	2.5	0.7	0.2	0.5	-	9.5	45.62	1.83	99.22	20.23
	1,000 to 3,000	0.4	-	1.8	1.4	9.3	4.3	3.9	1.3	0.5	1.4	24.3	53.92	1.25	131.65	20.90
More than 3,000	-	-	0.9	0.4	0.9	6.3	1.8	-	0.5	-	10.7	51.98	20.75	99.25	14.84	
Total 1/		5.9	2.1	15.0	4.1	18.2	23.9	12.3	6.1	7.0	5.4	100.0	51.58	1.25	316.01	33.44

1/ Total may not add due to rounding.

Table T-6  
Average Hauling Charges and West Coast No. 2 Diesel Prices: 2009-2014

Year	Hauling Charge, May - Cents per Cwt -	Average, No. 2 Diesel 1/ - Dollars per Gallon -
2009	53.40	\$2.27
2010	59.87	\$3.00
2011	60.34	\$3.90
2012	62.37	\$4.17
2013	56.45	\$4.04
2014	51.58	\$3.92



1/ January through April Average, West Coast No. 2 Diesel, Retail Prices (EMD\_EPD2D\_PTE\_R50\_DPG), <http://www.eia.gov/petroleum/gasdiesel/>. California excluded beginning 2012 (EMD\_EPD2D\_PTE\_R5XCA\_DPG).