

UNITED STATES DEPARTMENT OF AGRICULTURE

Agricultural Marketing Service
Dairy Programs

FEDERAL MILK ORDERS 124 & 131

1930-220th Street SE, Ste. 102
Bothell, WA 98021
Phone: (425) 487-6009
Fax: (425) 487-2775
Email: fmmsattle@fmmsattle.com

4835 E. Cactus Road, Ste. 440
Scottsdale, AZ 85254
Phone: (602) 547-2909
Fax: (602) 547-2906

**OVERVIEW OF COMPONENT TESTS OF PRODUCER MILK
AT THE FARM LEVEL**

**PACIFIC NORTHWEST AND ARIZONA
FEDERAL MILK MARKETING ORDERS**

2019

July 2020

In accordance with Federal civil rights law and U.S. Department of Agriculture (USDA) civil rights regulations and policies, the USDA, its Agencies, offices, and employees, and institutions participating in or administering USDA programs are prohibited from discriminating based on race, color, national origin, religion, sex, gender identity (including gender expression), sexual orientation, disability, age, marital status, family/parental status, income derived from a public assistance program, political beliefs, or reprisal or retaliation for prior civil rights activity, in any program or activity conducted or funded by USDA (not all bases apply to all programs). Remedies and complaint filing deadlines vary by program or incident.

Persons with disabilities who require alternative means of communication for program information (e.g., Braille, large print, audio tape, American Sign Language, etc.) should contact the responsible Agency or USDA's TARGET Center at (202) 720-2600 (voice and TTY) or contact USDA through the Federal Relay Service at (800) 877-8339. Additionally, program information may be made available in languages other than English.

To file a program discrimination complaint, complete the USDA Program Discrimination Complaint Form, AD-3027, found online at [How to File a Program Discrimination Complaint](#) and at any USDA office or write a letter addressed to USDA and provide in the letter all of the information requested in the form. To request a copy of the complaint form, call (866) 632-9992. Submit your completed form or letter to USDA by: (1) mail: U.S. Department of Agriculture, Office of the Assistant Secretary for Civil Rights, 1400 Independence Avenue, SW, Washington, D.C. 20250-9410; (2) fax: (202) 690-7442; or (3) email: program.intake@usda.gov.

USDA is an equal opportunity provider, employer, and lender.

OVERVIEW OF COMPONENT TESTS OF PRODUCER MILK AT THE FARM LEVEL

PACIFIC NORTHWEST AND ARIZONA FEDERAL MILK MARKETING ORDERS

2019

The following tables provide an overview of component tests of producer milk pooled on the Pacific Northwest (FO 124) and Arizona (FO 131) Federal Milk Marketing Orders. The tables summarize average tests by order, month, year, region, size-range of production, and long term trends. Producer milk values are also calculated using Federal order minimum producer prices for the respective orders at 3.5% butterfat and at test. All test and value averages are weighted averages.

The farm level data included in these tables comprises all producers and producer milk pooled on the Pacific Northwest and Arizona Orders. The data was collected from producer payrolls submitted by handlers to the market administrator's office. Components available for the Pacific Northwest Order are butterfat, protein, and other solids. Other solids are lactose and minerals. The component for the Arizona Order is butterfat. In certain months, milk production that historically qualified to be pooled on an order may not have been pooled due to price relationships. This historically eligible producer milk is **not** included in this analysis. Large changes in producer numbers and producer milk typically indicate those months when milk was not pooled due to price relationships. Small differences may be evident between published pool information and the data shown in this overview due to the use of partially audited payroll data.

The orders' milksheds were divided into different regions when possible. The Pacific Northwest Order's milkshed was divided into four regions representing each of Oregon and Washington divided by the Cascade Mountain Range. In Oregon and Washington, the west side of the Cascade Mountain Range has more precipitation and is characterized by a milder climate than the eastern side of the states. The region east of the Cascade Mountain Range has a drier climate with warmer summers and colder winters. Arizona is very dry year round with little precipitation and relatively high temperatures where most milk is produced. Data from a small number of counties are included in the data for the defined regions based on order association, relative proximity, and/or to prevent the release of restricted data.

The regions are:

- Western Washington (& Idaho and Utah)
- Eastern Washington
- Western Oregon (& Northern California)
- Eastern Oregon
- Arizona (& Southern California and Texas)

An index of Tables grouped by Federal order can be found on page ii.

Index of Tables

Page
Number

Pacific Northwest Order (FO 124)

Tables: T-1 Number of Producers, Producer Milk, Component Tests
and Standard Deviations: 20191

T-2 Number of Producers, Producer Milk and Component Tests
by Region: 20192

T-3a Butterfat Tests by Region: 20193

T-3b Protein Tests by Region: 20194

T-3c Other Solids Tests by Region: 20195

T-4 Component Tests by Size-Range of Producer Milk Deliveries: 20196

T-5 Producer Prices and Component Tests by Month: 20197

T-6 Producer Milk and Value by Size-Range of Producer
Milk Deliveries: 20198

T-7a Long Term Trends in Component Tests/Values, Butterfat: 2010-20199

T-7b Long Term Trends in Component Tests/Values, Protein: 2010-201910

T-7c Long Term Trends in Component Tests/Values, Other Solids: 2010-2019 ...11

Arizona Order (FO 131)

T-8 Number of Producers, Producer Milk, Component Tests
and Standard Deviations: 201912

T-9 Component Tests by Size-Range of Producer Milk Deliveries: 201913

T-10 Producer Prices and Component Tests by Month: 201914

T-11 Producer Milk and Value by Size-Range of Producer
Milk Deliveries: 201915

T-12 Long Term Trends in Component Tests/Values, Butterfat: 2010-201916

**Table T-1
Number of Producers, Producer Milk, Component Tests and Standard Deviations: 2019**

Pacific Northwest Order								
Month	No. of Producers	Producer Milk	Butterfat		Protein		Other Solids	
			Test	Standard Deviation	Test	Standard Deviation	Test	Standard Deviation
January	514	770,056,219	4.20	0.48	3.34	0.25	5.74	0.09
February	416	603,592,639	4.23	0.48	3.36	0.24	5.76	0.08
March	505	754,229,996	4.22	0.47	3.34	0.23	5.77	0.09
April	492	754,288,717	4.07	0.46	3.27	0.22	5.78	0.08
May	488	787,037,503	4.00	0.45	3.23	0.21	5.77	0.07
June	487	761,526,132	3.95	0.44	3.20	0.22	5.78	0.08
July	485	795,385,120	3.94	0.43	3.19	0.21	5.78	0.08
August	514	784,452,180	3.96	0.43	3.18	0.22	5.76	0.09
September	405	622,963,204	3.93	0.41	3.19	0.20	5.74	0.09
October	406	634,356,025	4.13	0.44	3.34	0.22	5.74	0.09
November	392	601,784,658	4.19	0.46	3.37	0.23	5.72	0.09
December	391	626,058,554	4.19	0.47	3.33	0.24	5.75	0.09
Average/Total	458	8,495,730,947	4.08	0.47	3.27	0.23	5.76	0.09

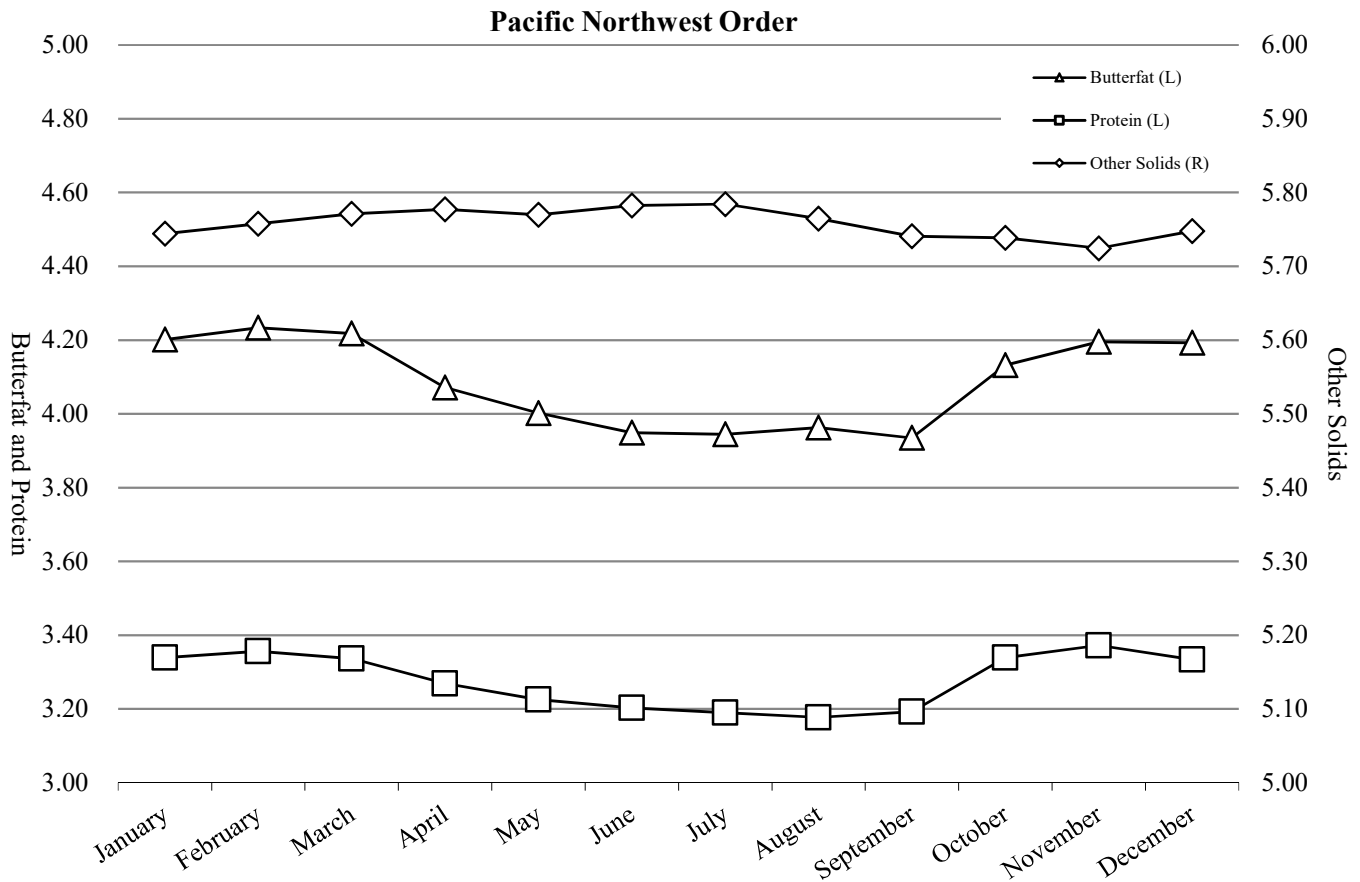


Table T-2
Number of Producers, Producer Milk and Component Tests by Region: 2019
Pacific Northwest Order

Month	Western Washington 1/					Eastern Washington				
	No. of Producers	Producer Milk	Butterfat	Protein	OS	No. of Producers	Producer Milk	Butterfat	Protein	OS
January	230	182,104,404	4.16	3.29	5.73	106	380,779,998	4.10	3.29	5.76
February	133	88,537,804	4.12	3.26	5.75	107	330,398,067	4.15	3.31	5.77
March	223	182,847,305	4.20	3.28	5.75	107	368,684,151	4.11	3.29	5.79
April	212	184,624,940	4.07	3.23	5.76	107	368,581,314	3.94	3.21	5.79
May	209	191,431,625	4.02	3.21	5.75	106	385,503,427	3.85	3.16	5.78
June	208	184,389,349	3.97	3.19	5.76	106	374,745,442	3.78	3.13	5.79
July	207	188,757,701	3.99	3.18	5.76	106	396,207,180	3.80	3.12	5.79
August	218	186,753,287	3.99	3.18	5.75	106	389,619,586	3.82	3.09	5.78
September	215	171,940,615	4.02	3.23	5.72	105	375,663,525	3.91	3.18	5.75
October	215	176,046,128	4.17	3.34	5.72	105	376,367,695	4.14	3.35	5.75
November	203	168,850,499	4.21	3.36	5.71	105	357,660,647	4.21	3.39	5.73
December	202	178,123,992	4.16	3.32	5.74	105	369,147,154	4.24	3.35	5.75
Average/Total	206	2,084,407,649	4.09	3.25	5.74	106	4,473,358,186	4.00	3.24	5.77

Month	Western Oregon 2/					Eastern Oregon				
	No. of Producers	Producer Milk	Butterfat	Protein	OS	No. of Producers	Producer Milk	Butterfat	Protein	OS
January	163	121,108,482	4.30	3.34	5.76	15	86,063,335	4.59	3.65	5.68
February	161	110,765,347	4.32	3.35	5.77	15	73,891,421	4.63	3.67	5.68
March	161	123,943,918	4.31	3.35	5.79	14	78,754,622	4.62	3.65	5.71
April	159	122,387,152	4.21	3.30	5.79	14	78,695,311	4.47	3.58	5.73
May	159	126,364,693	4.15	3.26	5.79	14	83,737,758	4.43	3.51	5.74
June	159	120,490,216	4.13	3.26	5.80	14	81,901,125	4.41	3.47	5.76
July	158	122,836,216	4.09	3.23	5.80	14	87,584,023	4.32	3.46	5.76
August	176	121,523,866	4.11	3.25	5.76	14	86,555,441	4.35	3.45	5.71
September	77	65,479,634	3.85	3.16	5.75	8	9,879,430	3.88	3.39	5.68
October	77	67,946,789	3.99	3.27	5.76	9	13,995,413	4.11	3.41	5.66
November	76	65,431,600	4.08	3.30	5.75	8	9,841,912	4.16	3.54	5.65
December	76	68,873,852	4.05	3.26	5.77	8	9,913,556	4.17	3.49	5.67
Average/Total	134	1,237,151,765	4.15	3.28	5.78	12	700,813,347	4.45	3.55	5.72

1/ Includes: Bear Lake, Franklin and Latah Counties, Idaho; Cache County, Utah; Benton and Kittitas Counties, Washington.

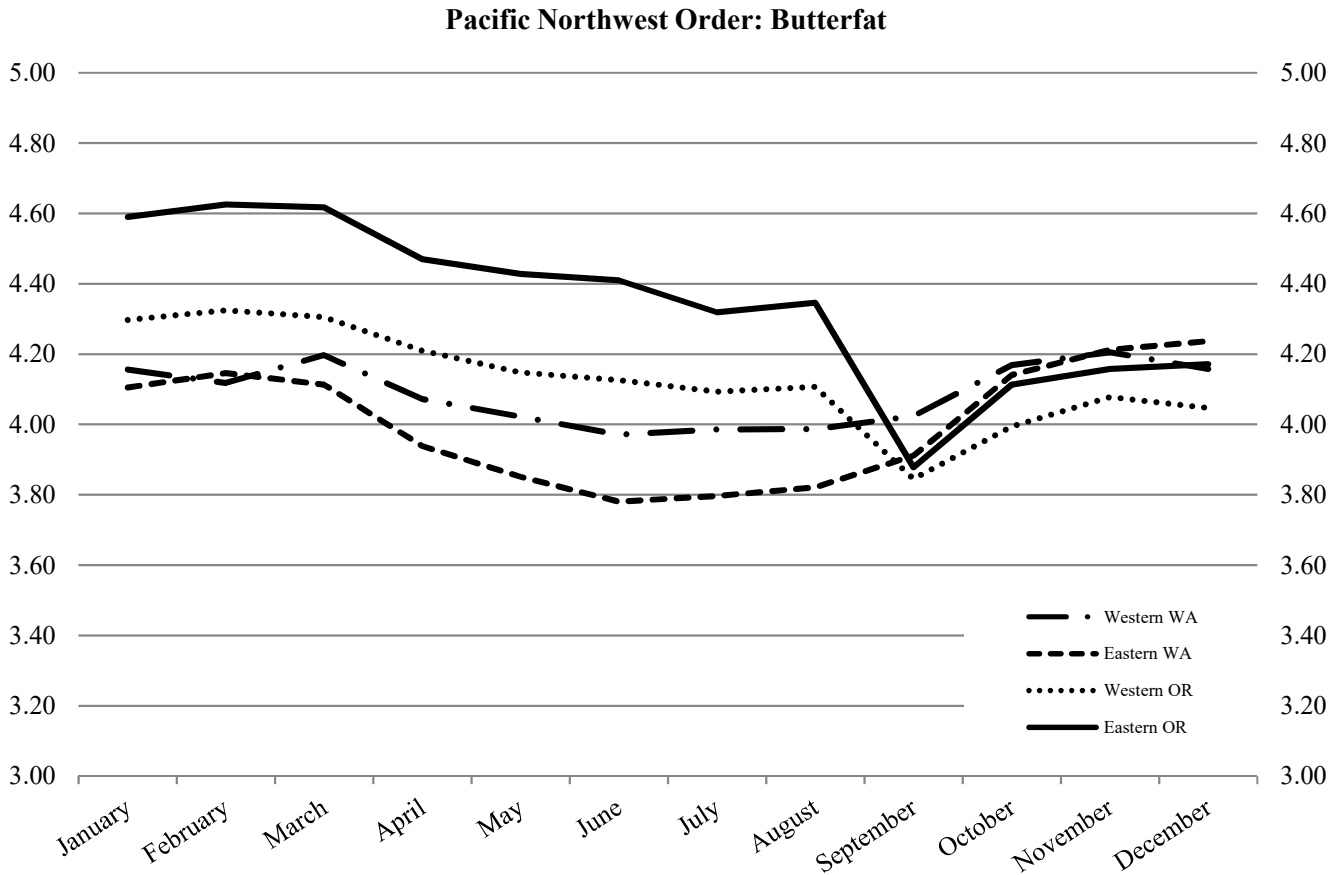
2/ Includes: Del Norte, Humboldt, Mendocino, and Sonoma Counties, California; Jackson County, Oregon.

**Table T-3a
Butterfat Tests by Region: 2019**

Month	Pacific Northwest Order Butterfat			
	Western WA 1/	Eastern WA	Western OR 2/	Eastern OR
January	4.16	4.10	4.30	4.59
February	4.12	4.15	4.32	4.63
March	4.20	4.11	4.31	4.62
April	4.07	3.94	4.21	4.47
May	4.02	3.85	4.15	4.43
June	3.97	3.78	4.13	4.41
July	3.99	3.80	4.09	4.32
August	3.99	3.82	4.11	4.35
September	4.02	3.91	3.85	3.88
October	4.17	4.14	3.99	4.11
November	4.21	4.21	4.08	4.16
December	4.16	4.24	4.05	4.17
Average	4.09	4.00	4.15	4.45

1/ Includes: Bear Lake, Franklin and Latah Counties, Idaho; Cache County, Utah; Benton and Kittitas Counties, Washington.

2/ Includes: Del Norte, Humboldt, Mendocino, and Sonoma Counties, California; Jackson County, Oregon.



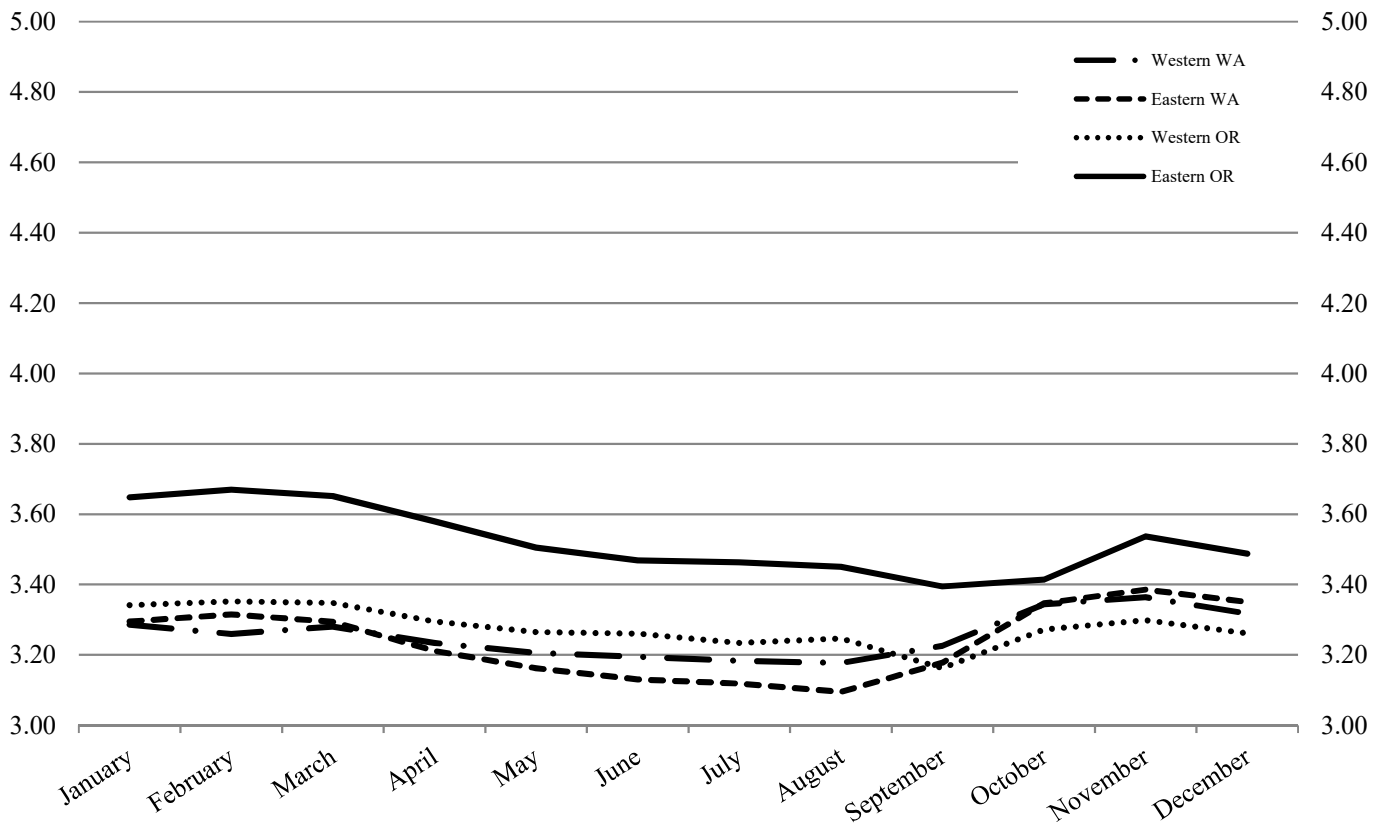
**Table T-3b
Protein Tests by Region: 2019**

Month	Pacific Northwest Order			
	Western WA 1/	Eastern WA	Western OR 2/	Eastern OR
January	3.29	3.29	3.34	3.65
February	3.26	3.31	3.35	3.67
March	3.28	3.29	3.35	3.65
April	3.23	3.21	3.30	3.58
May	3.21	3.16	3.26	3.51
June	3.19	3.13	3.26	3.47
July	3.18	3.12	3.23	3.46
August	3.18	3.09	3.25	3.45
September	3.23	3.18	3.16	3.39
October	3.34	3.35	3.27	3.41
November	3.36	3.39	3.30	3.54
December	3.32	3.35	3.26	3.49
Average	3.25	3.24	3.28	3.55

1/ Includes: Bear Lake, Franklin and Latah Counties, Idaho; Cache County, Utah; Benton and Kittitas Counties, Washington.

2/ Includes: Del Norte, Humboldt, Mendocino, and Sonoma Counties, California; Jackson County, Oregon.

Pacific Northwest Order: Protein



**Table T-3c
Other Solids Tests by Region: 2019**

Month	Pacific Northwest Order Other Solids			
	Western WA 1/	Eastern WA	Western OR 2/	Eastern OR
January	5.73	5.76	5.76	5.68
February	5.75	5.77	5.77	5.68
March	5.75	5.79	5.79	5.71
April	5.76	5.79	5.79	5.73
May	5.75	5.78	5.79	5.74
June	5.76	5.79	5.80	5.76
July	5.76	5.79	5.80	5.76
August	5.75	5.78	5.76	5.71
September	5.72	5.75	5.75	5.68
October	5.72	5.75	5.76	5.66
November	5.71	5.73	5.75	5.65
December	5.74	5.75	5.77	5.67
Average	5.74	5.77	5.78	5.72

1/ Includes: Bear Lake, Franklin and Latah Counties, Idaho; Cache County, Utah; Benton and Kittitas Counties, Washington.

2/ Includes: Del Norte, Humboldt, Mendocino, and Sonoma Counties, California; Jackson County, Oregon.

Pacific Northwest Order: Other Solids

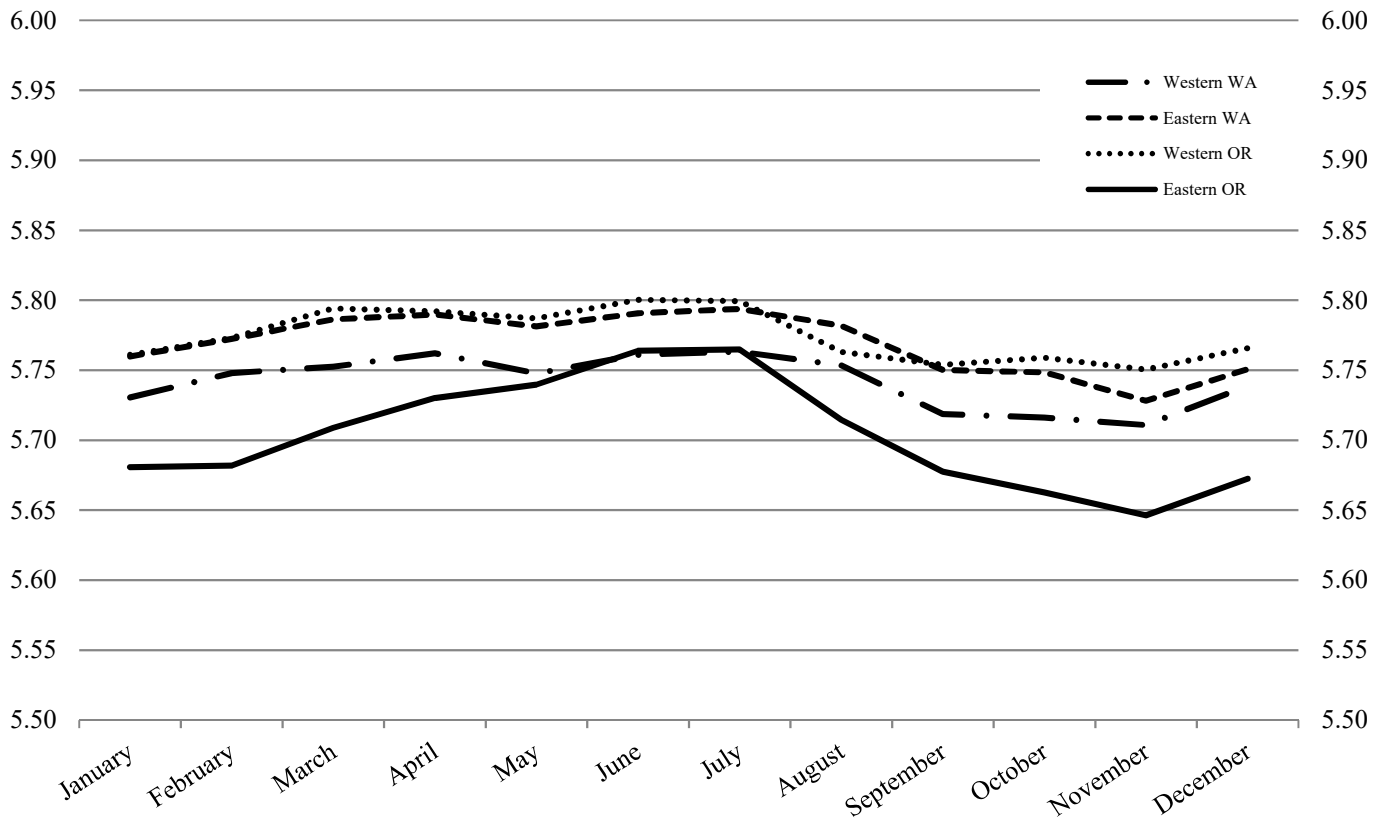
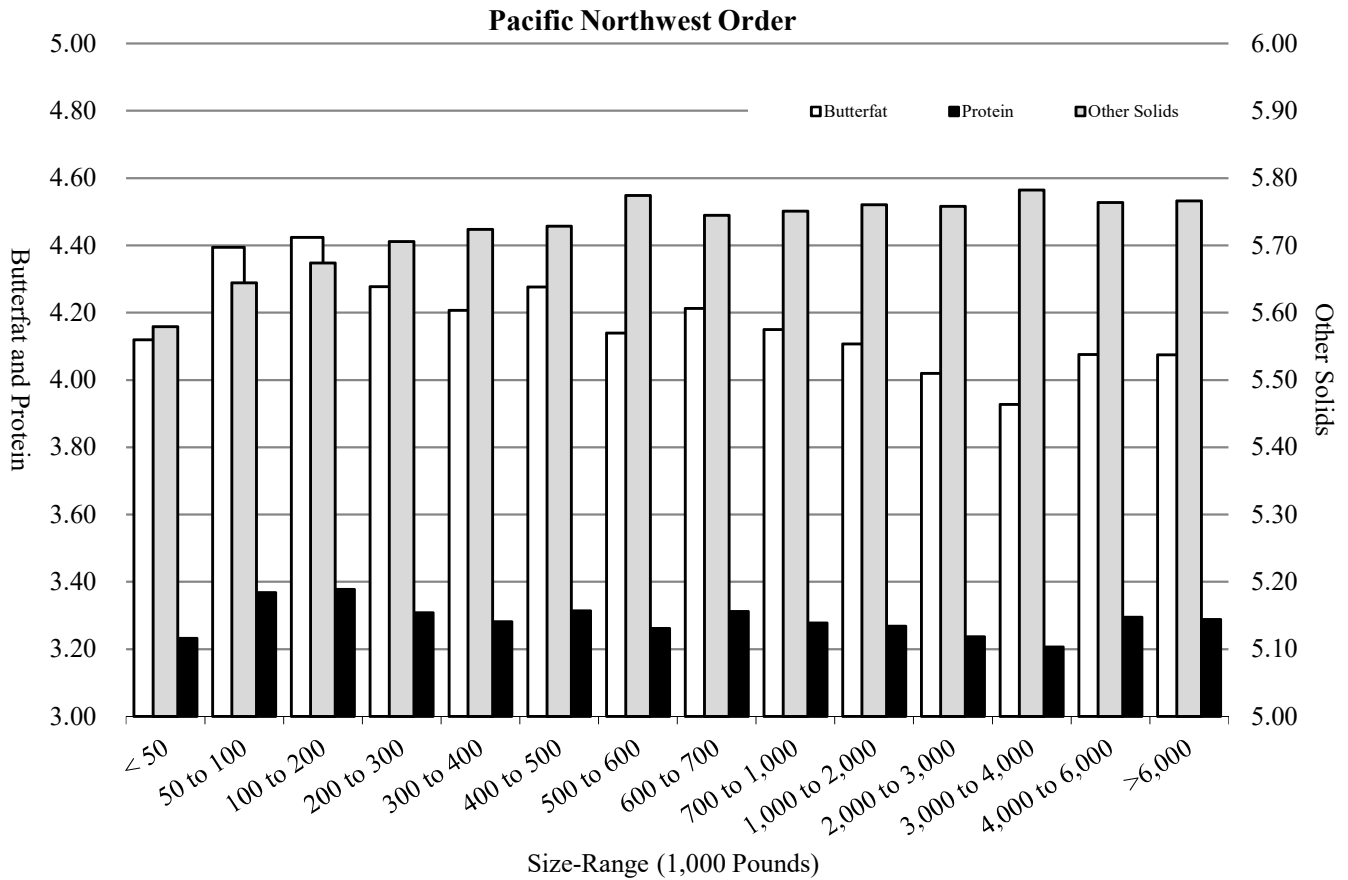


Table T-4
Component Tests by Size-Range of Producer Milk Deliveries: 2019

Size-Range (Pounds)		No. of Observations	Pacific Northwest Order		
Equal to or more than	Less than		Butterfat	Protein	Other Solids
0	50,000	193	4.12	3.23	5.58
50,000	100,000	338	4.39	3.37	5.64
100,000	200,000	645	4.42	3.38	5.67
200,000	300,000	566	4.28	3.31	5.71
300,000	400,000	405	4.21	3.28	5.72
400,000	500,000	271	4.28	3.31	5.73
500,000	600,000	236	4.14	3.26	5.77
600,000	700,000	212	4.21	3.31	5.74
700,000	1,000,000	521	4.15	3.28	5.75
1,000,000	2,000,000	867	4.11	3.27	5.76
2,000,000	3,000,000	510	4.02	3.24	5.76
3,000,000	4,000,000	192	3.93	3.21	5.78
4,000,000	6,000,000	229	4.08	3.29	5.76
6,000,000		310	4.07	3.29	5.77
Total/Average		5,495	4.08	3.27	5.76



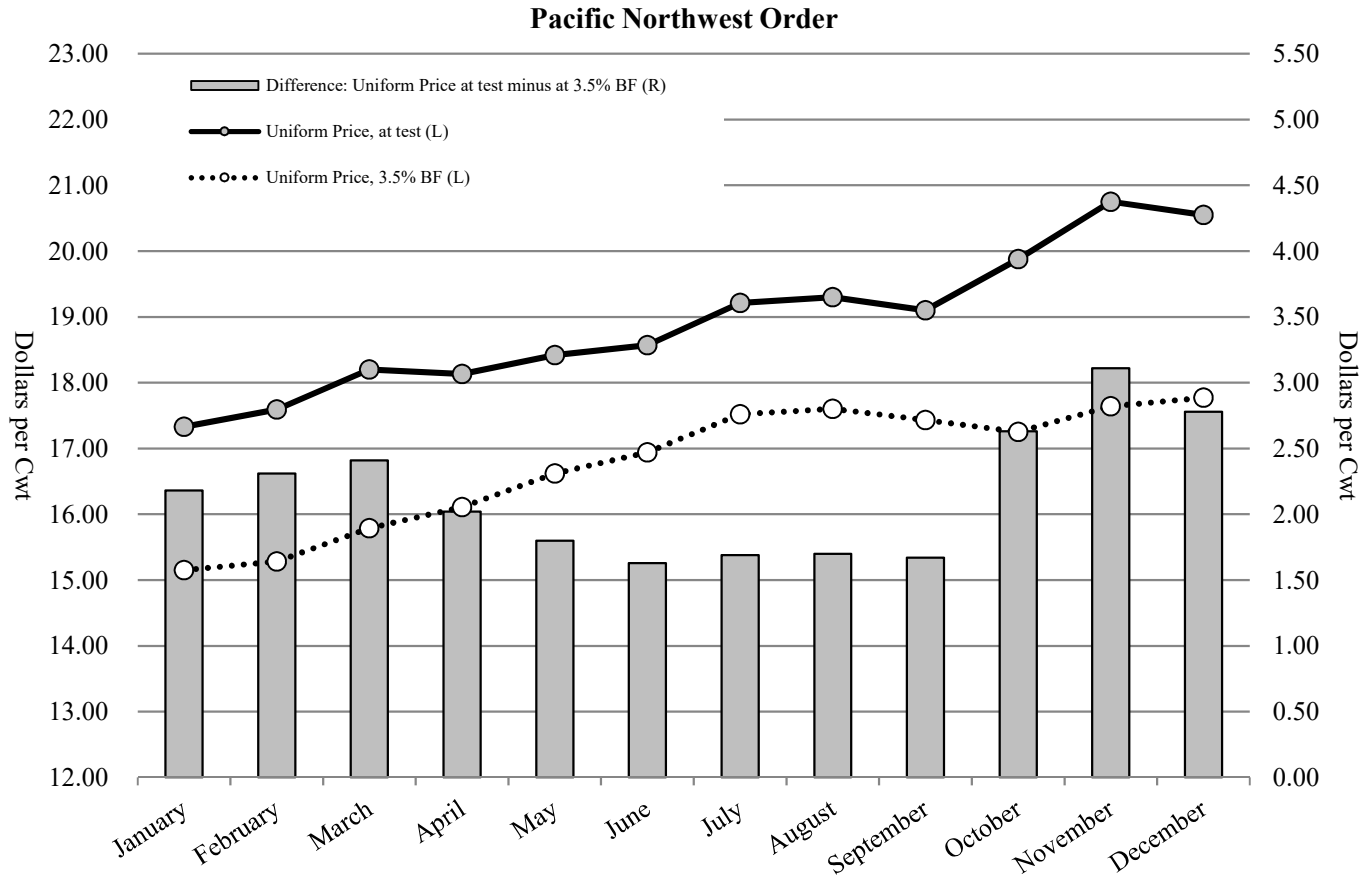
**Table T-5
 Producer Prices and Component Tests by Month: 2019**

Pacific Northwest Order

Month	A	B	Difference (B - A)	Butterfat		Protein		Other Solids		Producer Price Differential 1/	
	Uniform Price, 3.5% BF	Value, at test *		- \$ / Lb -	- % -	- \$ / Lb -	- % -	- \$ / Lb -	- % -		
				- - - - \$ / Cwt - - - -	- \$ / Lb -	- % -	- \$ / Lb -	- % -	- \$ / Lb -	- % -	- \$ / Cwt -
January	15.15	17.33	2.18	2.4981	4.20	1.1927	3.34	0.2898	5.74	1.19	
February	15.28	17.59	2.31	2.5345	4.23	1.1776	3.36	0.2631	5.76	1.39	
March	15.79	18.20	2.41	2.5461	4.22	1.6303	3.34	0.2200	5.77	0.75	
April	16.11	18.13	2.02	2.5375	4.07	1.9890	3.27	0.1990	5.78	0.15	
May	16.62	18.42	1.80	2.5718	4.00	2.1159	3.23	0.1847	5.77	0.24	
June	16.94	18.57	1.63	2.6579	3.95	2.0046	3.20	0.1702	5.78	0.67	
July	17.52	19.21	1.69	2.6858	3.94	2.4032	3.19	0.1689	5.78	(0.03)	
August	17.60	19.30	1.70	2.6574	3.96	2.4453	3.18	0.1730	5.76	0.00	
September	17.43	19.10	1.67	2.4982	3.93	2.8633	3.19	0.1758	5.74	(0.88)	
October	17.25	19.88	2.63	2.4031	4.13	3.1700	3.34	0.1447	5.74	(1.47)	
November	17.64	20.75	3.11	2.3195	4.19	3.9118	3.37	0.1112	5.72	(2.81)	
December	17.77	20.55	2.78	2.1952	4.19	3.6515	3.33	0.1341	5.75	(1.60)	
Wtd. Average	16.74	18.87	2.13	2.5174	4.08	2.3330	3.27	0.1878	5.76	(0.13)	
Percent of FO Value				54%		40%		6%		-1%	

* Similar to the Uniform Price, at test, but may differ due to the use of partially audited payroll data.

1/ The producer price differentials for the Pacific Northwest Order are subject to applicable location adjustments.



**Table T-6
 Producer Milk and Value by Size-Range of Producer Milk Deliveries: 2019**

Pacific Northwest Order

Size-Range		Producer Milk	Percent of Producer Milk	No. of Observations	Percent of Observations	Producer Milk Value at Test 1/	Value, at test
Equal to or more than	Less than						
- - - Pounds - - -		- Pounds -	- % -		- % -	- Dollars -	- \$ / Cwt -
0	50,000	6,041,054	0.1%	193	3.5%	1,134,307.58	18.78
50,000	100,000	26,249,830	0.3%	338	6.2%	5,208,553.60	19.84
100,000	200,000	94,091,251	1.1%	645	11.7%	18,746,269.79	19.92
200,000	300,000	141,079,121	1.7%	566	10.3%	27,371,573.01	19.40
300,000	400,000	140,439,566	1.7%	405	7.4%	26,919,659.36	19.17
400,000	500,000	122,408,309	1.4%	271	4.9%	23,617,091.84	19.29
500,000	600,000	129,144,040	1.5%	236	4.3%	24,435,765.75	18.92
600,000	700,000	136,493,823	1.6%	212	3.9%	26,422,138.86	19.36
700,000	1,000,000	438,451,094	5.2%	521	9.5%	83,314,100.89	19.00
1,000,000	2,000,000	1,284,308,510	15.1%	867	15.8%	243,054,105.16	18.92
2,000,000	3,000,000	1,231,055,639	14.5%	510	9.3%	230,570,885.37	18.73
3,000,000	4,000,000	669,826,521	7.9%	192	3.5%	123,035,524.36	18.37
4,000,000	6,000,000	1,130,203,232	13.3%	229	4.2%	213,133,227.41	18.86
6,000,000		2,945,938,957	34.7%	310	5.6%	555,803,306.25	18.87
Total/Average		8,495,730,947	100.0%	5,495	100.0%	1,602,766,509.23	18.87

1/ Based on Federal order producer minimum prices. Producer prices are subject to location adjustments.

Pacific Northwest Order

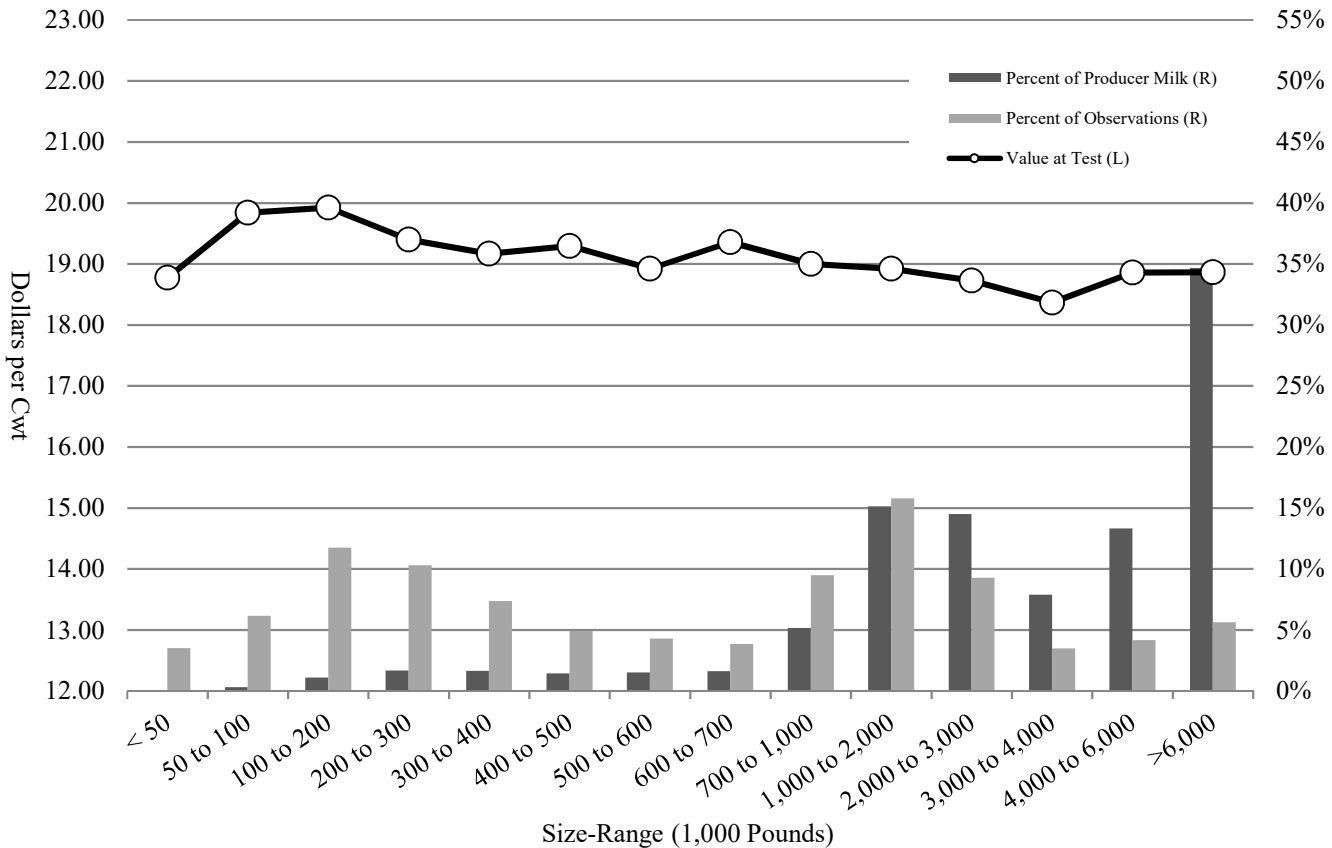


Table T-7a
Long Term Trends in Component Tests/Values, Butterfat: 2010-2019

Pacific Northwest Order

Year	Average No. of Producers	Percent of FO Value Contributed by Butterfat	Test	Standard Deviation	Minimum	Maximum
2010	632	43%	3.73	0.43	2.74	6.10
2011	610	40%	3.77	0.43	2.70	6.21
2012	532	35%	3.81	0.42	2.78	6.20
2013	568	32%	3.88	0.44	2.84	6.07
2014	534	38%	3.88	0.45	2.72	6.22
2015	479	54%	3.92	0.46	2.47	6.67
2016	492	57%	3.95	0.45	2.80	6.30
2017	468	58%	3.99	0.45	2.64	5.87
2018	496	61%	4.07	0.47	2.60	6.10
2019	458	54%	4.08	0.47	3.01	5.94
10 Year Simple Average	527	47%	3.91	0.45	2.73	6.17

Pacific Northwest Order: Butterfat

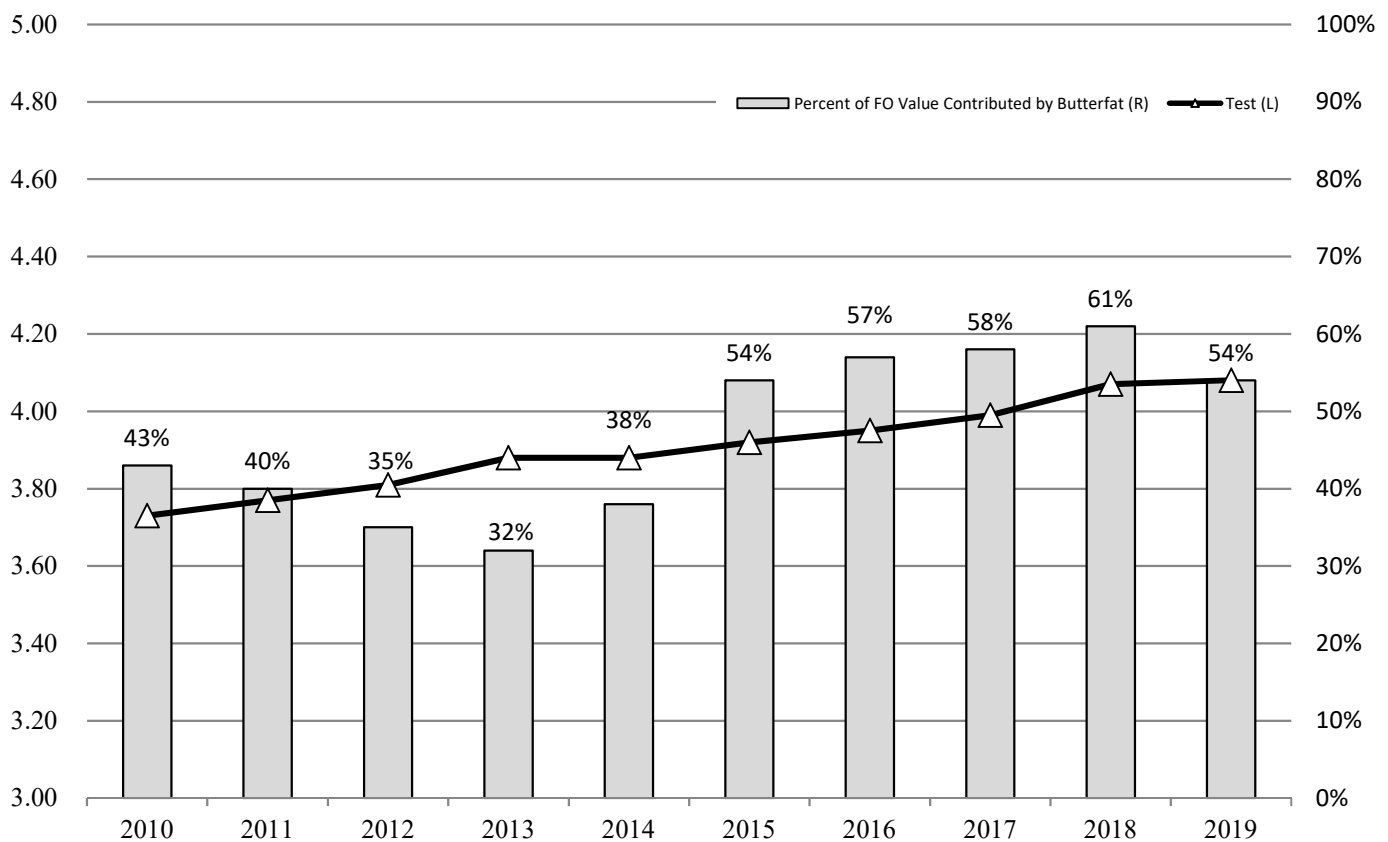


Table T-7b
Long Term Trends in Component Tests/Values, Protein: 2010-2019

Pacific Northwest Order

Year	Average No. of Producers	Percent of FO Value Contributed by Protein	Test	Standard Deviation	Minimum	Maximum
2010	632	45%	3.15	0.22	2.13	4.40
2011	610	46%	3.17	0.22	2.58	4.43
2012	532	52%	3.17	0.22	2.47	4.31
2013	568	52%	3.22	0.22	2.58	4.30
2014	534	49%	3.20	0.22	2.60	4.56
2015	479	40%	3.20	0.23	2.58	4.34
2016	492	41%	3.22	0.23	2.45	4.42
2017	468	33%	3.24	0.23	2.62	4.33
2018	496	32%	3.27	0.24	2.66	4.35
2019	458	40%	3.27	0.23	2.67	4.29
10 Year Simple Average	527	43%	3.21	0.23	2.53	4.37

Pacific Northwest Order: Protein

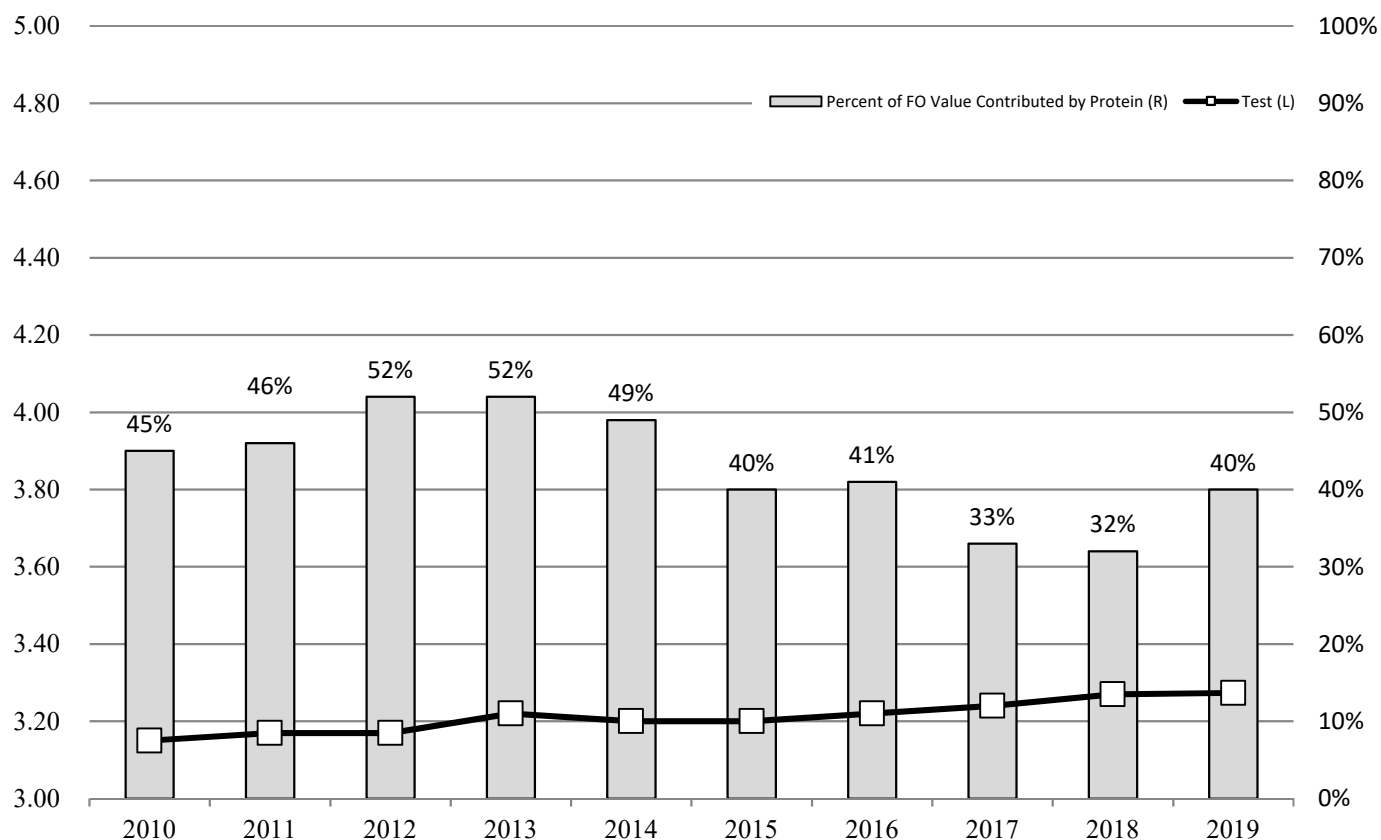


Table T-7c
Long Term Trends in Component Tests/Values, Other Solids: 2010-2019

Pacific Northwest Order

Year	Average No. of Producers	Percent of FO Value Contributed by Other Solids	Test	Standard Deviation	Minimum	Maximum
2010	632	6%	5.71	0.09	4.71	5.92
2011	610	10%	5.73	0.09	4.86	6.01
2012	532	13%	5.74	0.09	4.62	5.95
2013	568	11%	5.73	0.08	4.67	5.97
2014	534	11%	5.72	0.08	4.78	5.91
2015	479	6%	5.73	0.09	5.20	5.97
2016	492	3%	5.73	0.09	5.12	5.93
2017	468	8%	5.74	0.09	5.24	5.95
2018	496	5%	5.75	0.09	5.20	5.95
2019	458	6%	5.76	0.09	5.21	5.96
10 Year Simple Average	527	8%	5.73	0.09	4.96	5.95

Pacific Northwest Order: Other Solids

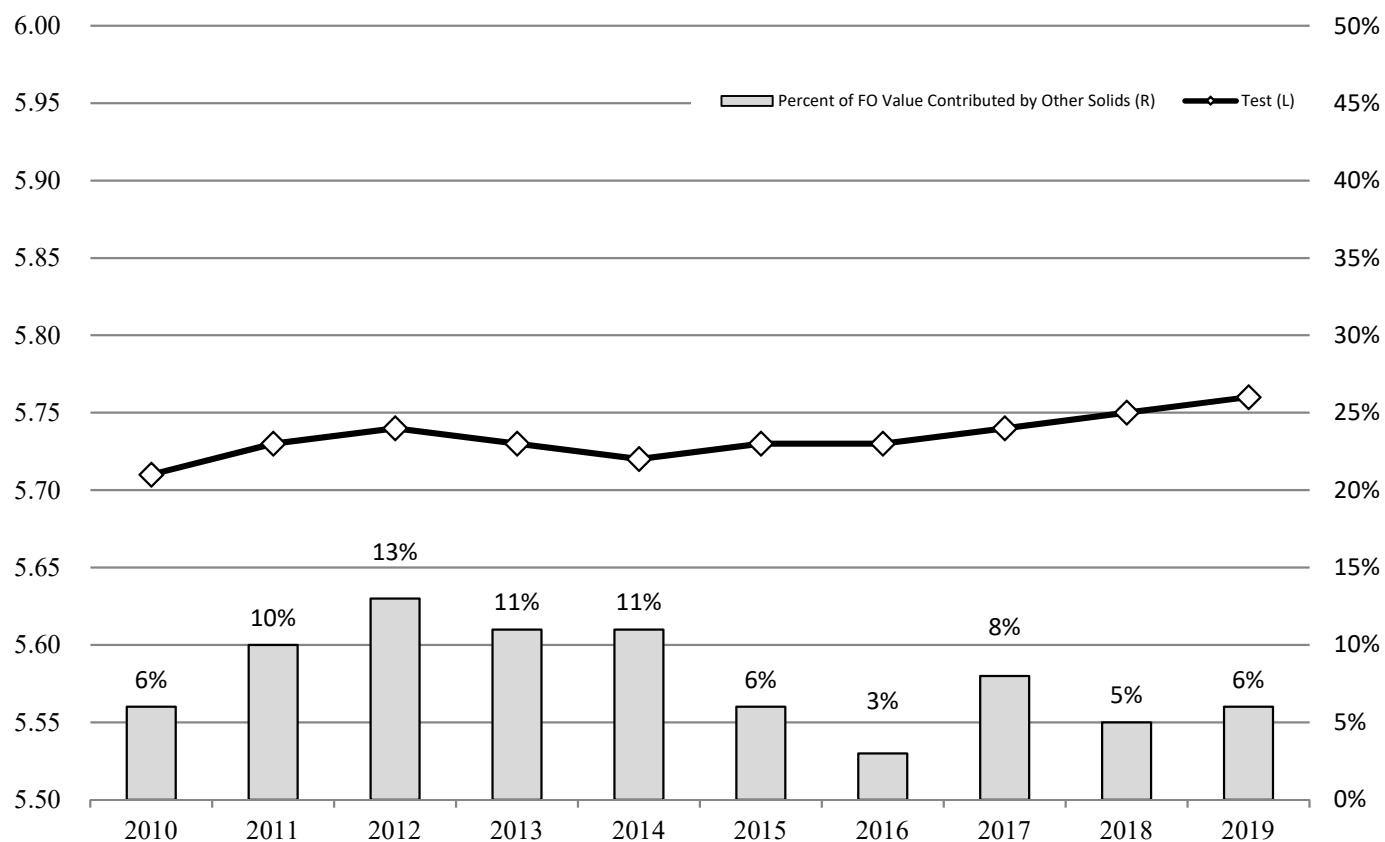


Table T-8
Number of Producers, Producer Milk, Component Tests and Standard Deviations: 2019

Arizona Order				
Month	No. of Producers	Producer Milk	Butterfat	
			Test	Standard Deviation
January	80	445,883,950	3.79	0.36
February	80	413,728,223	3.78	0.32
March	79	462,755,602	3.71	0.30
April	76	440,318,068	3.67	0.29
May	73	434,074,677	3.65	0.29
June	76	413,983,247	3.68	0.29
July	74	390,814,342	3.69	0.27
August	75	383,863,745	3.66	0.29
September	74	335,287,735	3.69	0.29
October	70	365,007,929	3.77	0.30
November	71	368,621,603	3.84	0.33
December	69	385,350,773	3.91	0.33
Average/Total	75	4,839,689,894	3.74	0.32

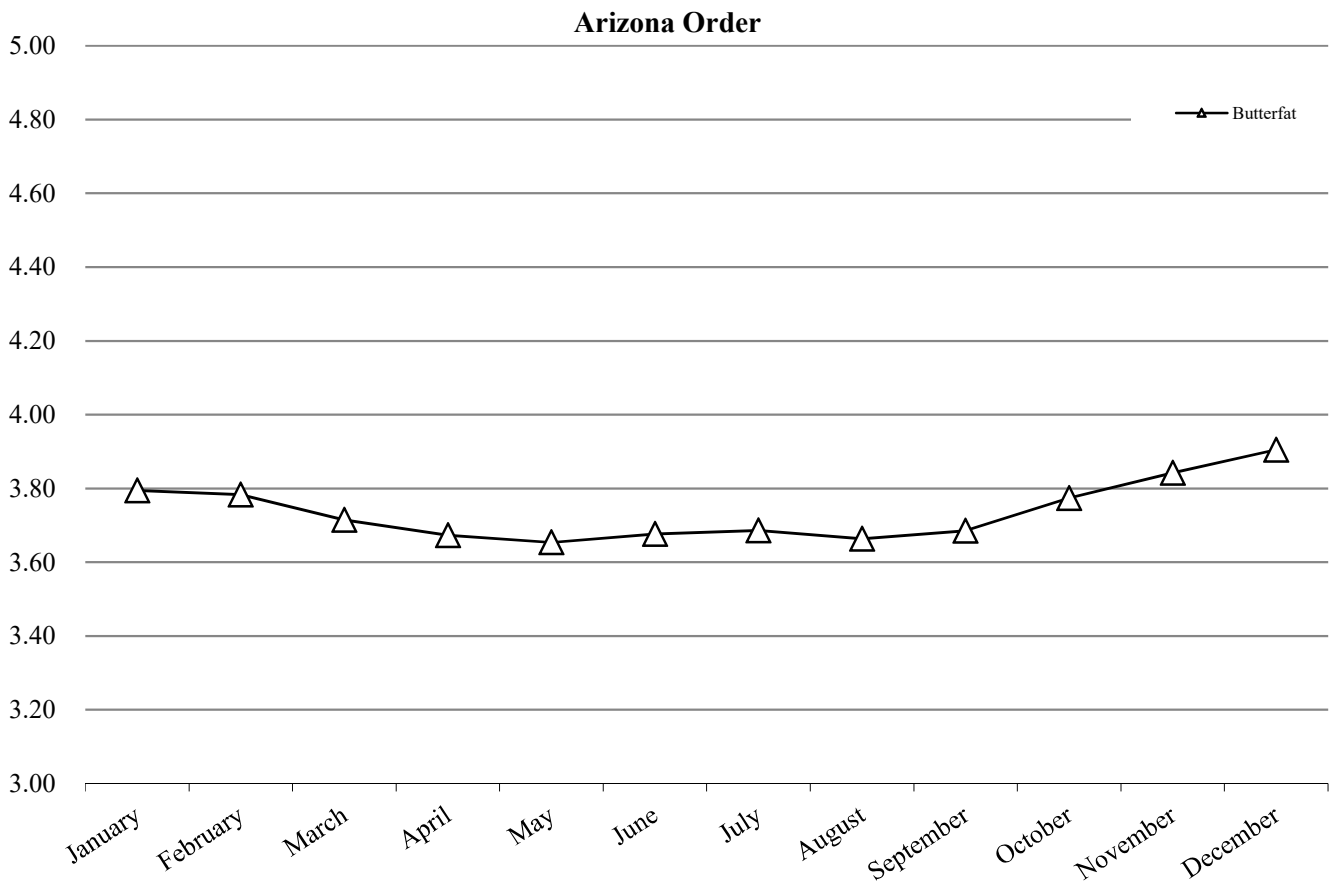


Table T-9
Component Tests by Size-Range of Producer Milk Deliveries: 2019

Size-Range (Pounds)		No. of Observations	Butterfat
Equal to or more than	Less than		
0	200,000	33	3.87
200,000	300,000	6	3.71
300,000	400,000	10	3.94
400,000	500,000	3	4.11
500,000	600,000	7	3.82
600,000	700,000	6	3.78
700,000	1,000,000	33	3.75
1,000,000	2,000,000	130	3.80
2,000,000	3,000,000	92	3.84
3,000,000	4,000,000	102	3.80
4,000,000	5,000,000	85	3.73
5,000,000	6,000,000	95	3.72
6,000,000	7,000,000	104	3.79
7,000,000		191	3.70
Total/Average		897	3.74

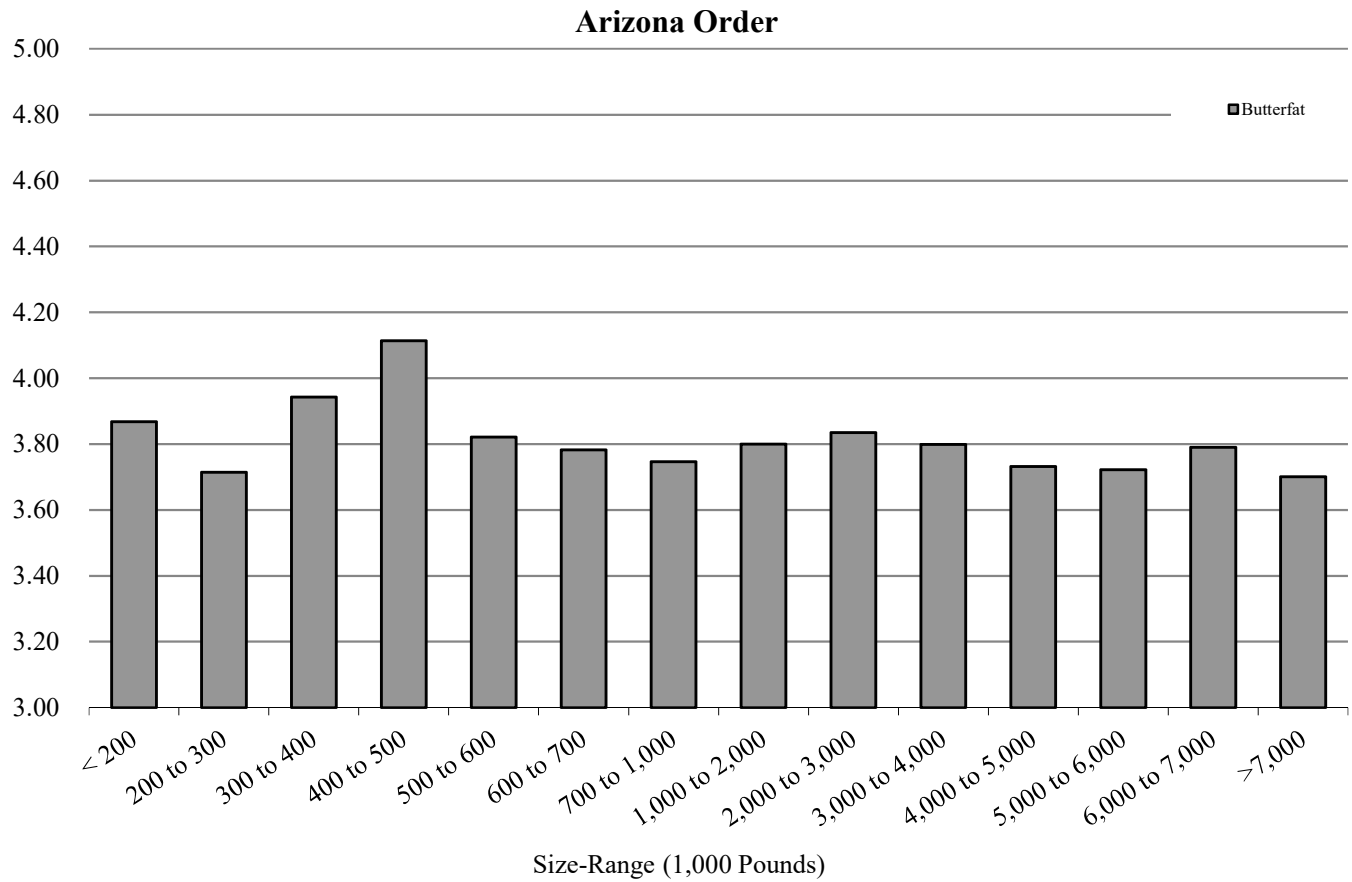


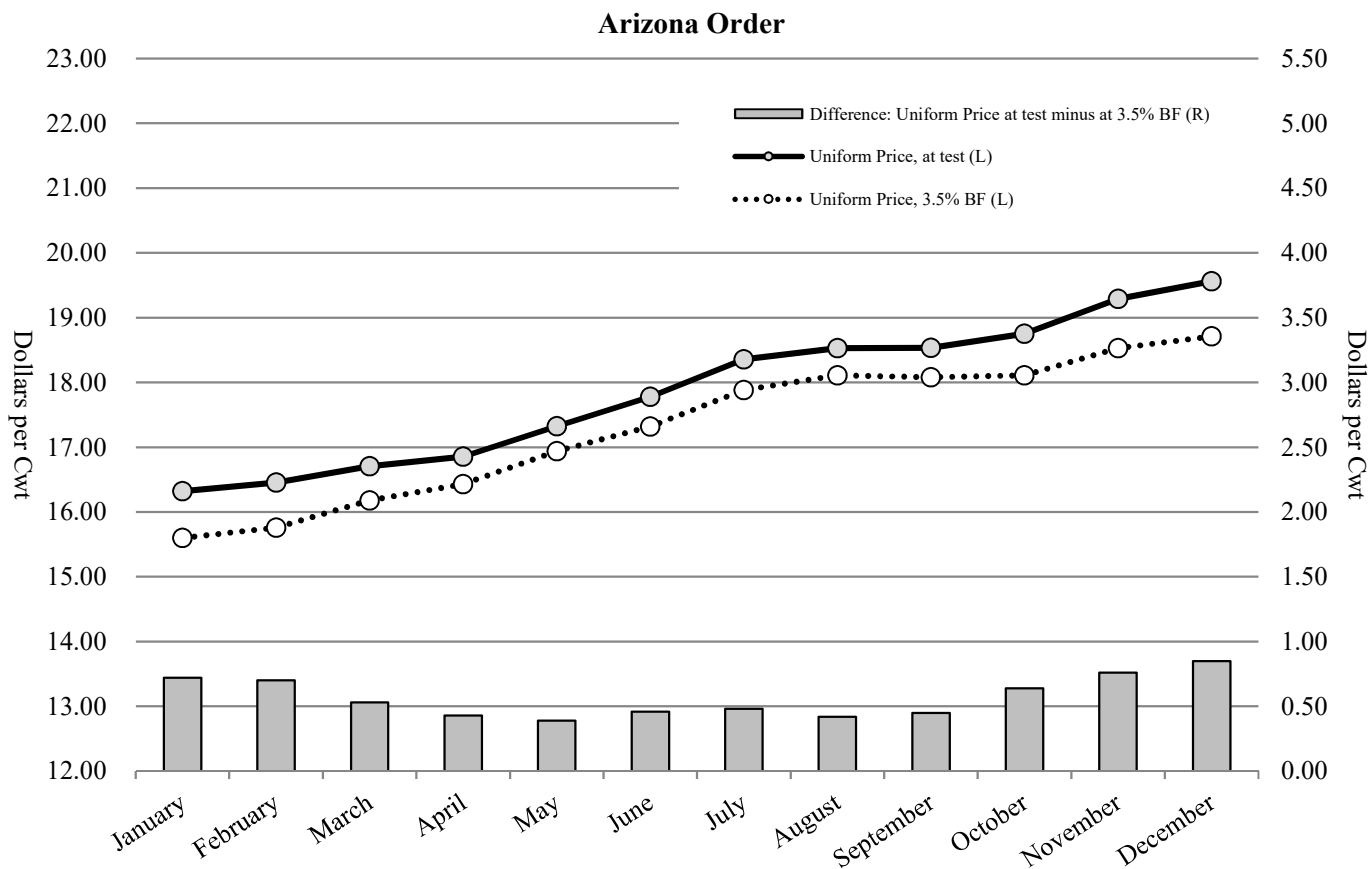
Table T-10
Producer Prices and Component Tests by Month: 2019

Arizona Order

Month	A		B		Butterfat 1/		Skim 1/	
	Uniform Price, 3.5% BF	Value, at test *	Difference (B - A)		- \$ / Lb -	- % -	- \$ / Cwt -	- % -
January	15.60	16.32	0.72		2.5060	3.79	7.08	96.21
February	15.76	16.46	0.70		2.5340	3.78	7.14	96.22
March	16.18	16.71	0.53		2.5536	3.71	7.50	96.29
April	16.43	16.86	0.43		2.5459	3.67	7.79	96.33
May	16.94	17.33	0.39		2.5720	3.65	8.23	96.35
June	17.32	17.78	0.46		2.6505	3.68	8.34	96.32
July	17.88	18.36	0.48		2.6865	3.69	8.78	96.31
August	18.11	18.53	0.42		2.6674	3.66	9.09	96.34
September	18.08	18.53	0.45		2.5332	3.69	9.55	96.31
October	18.11	18.75	0.64		2.4323	3.77	9.95	96.23
November	18.53	19.29	0.76		2.3379	3.84	10.72	96.16
December	18.71	19.56	0.85		2.2213	3.91	11.33	96.09
Wtd. Average	17.23	17.79	0.56		2.5208	3.74	8.70	96.26
Percent of FO Value					53%		47%	

* Similar to the Uniform Price, at test, but may differ due to the use of partially audited payroll data.

1/ The producer prices for the Arizona Order are subject to applicable location adjustments.



**Table T-11
 Producer Milk and Value by Size-Range of Producer Milk Deliveries: 2019**

Arizona Order

Size-Range		Producer Milk	Percent of Producer Milk	No. of Observations	Percent of Observations	Producer Milk Value at Test 1/	Value, at test
Equal to or more than	Less than						
- - - Pounds - - -		- Pounds -	- % -		- % -	- Dollars -	- \$ / Cwt -
0	200,000	2,889,180	0.06%	33	3.68%	542,994.78	18.79
200,000	300,000	1,398,120	0.03%	6	0.67%	250,711.54	17.93
300,000	400,000	3,350,820	0.07%	10	1.11%	634,945.09	18.95
400,000	500,000	1,292,880	0.03%	3	0.33%	241,899.88	18.71
500,000	600,000	3,796,770	0.08%	7	0.78%	699,483.97	18.42
600,000	700,000	3,850,820	0.08%	6	0.67%	701,027.13	18.20
700,000	1,000,000	28,474,172	0.59%	33	3.68%	5,150,209.93	18.09
1,000,000	2,000,000	200,814,084	4.15%	130	14.49%	35,868,316.15	17.86
2,000,000	3,000,000	226,923,588	4.69%	92	10.26%	40,296,680.92	17.76
3,000,000	4,000,000	357,362,785	7.38%	102	11.37%	64,069,729.64	17.93
4,000,000	5,000,000	389,817,883	8.05%	85	9.48%	70,949,569.06	18.20
5,000,000	6,000,000	519,705,558	10.74%	95	10.59%	92,005,722.62	17.70
6,000,000	7,000,000	673,645,830	13.92%	104	11.59%	120,169,014.41	17.84
7,000,000		2,426,367,404	50.13%	191	21.29%	429,576,698.94	17.70
Total/Average		4,839,689,894	100.00%	897	100.00%	861,157,004.05	17.79

1/ Based on Federal order minimum producer prices. Producer prices are subject to location adjustments.

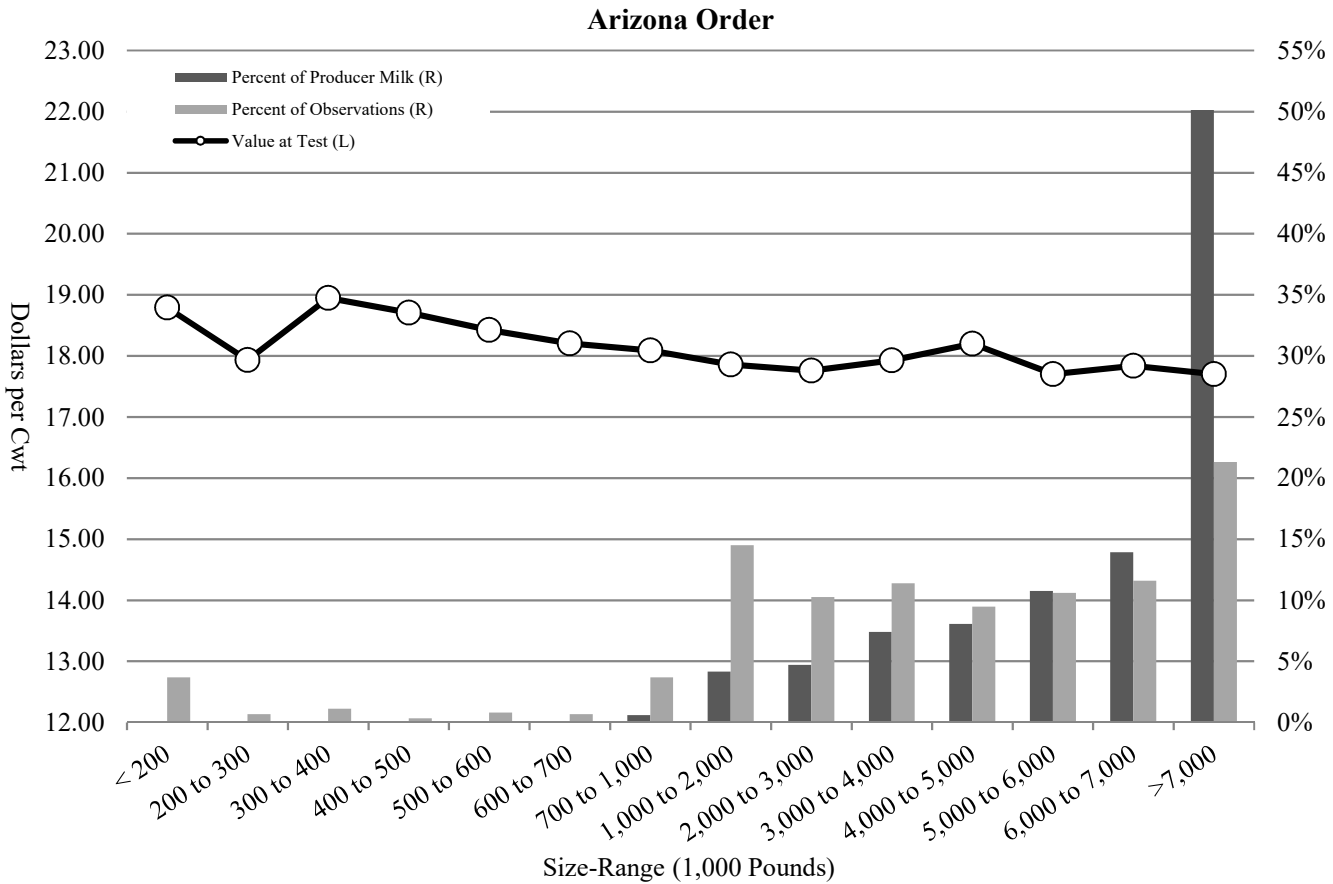


Table T-12
Long Term Trends in Component Tests/Values, Butterfat: 2010-2019

Arizona Order						
Year	Average No. of Producers	Percent of FO Value Contributed by Butterfat	Test	Standard Deviation	Minimum	Maximum
2010	96	41%	3.50	0.36	2.36	5.45
2011	100	39%	3.55	0.33	2.48	4.99
2012	95	35%	3.55	0.33	2.98	5.46
2013	92	30%	3.52	0.32	2.90	5.09
2014	92	35%	3.47	0.31	2.91	4.94
2015	95	50%	3.47	0.31	2.46	5.02
2016	91	55%	3.54	0.31	2.87	5.10
2017	89	57%	3.63	0.30	2.92	5.08
2018	81	60%	3.66	0.32	2.74	5.16
2019	75	53%	3.74	0.32	2.59	5.23
10 Year Simple Average	91	46%	3.56	0.32	2.72	5.15

