

UNITED STATES DEPARTMENT OF AGRICULTURE

Agricultural Marketing Service

Dairy Programs

FEDERAL MILK ORDERS 124 & 131

1930-220th Street SE, Ste. 102
Bothell, WA 98021
Phone: (425) 487-6009
Fax: (425) 487-2775
Email: fmmaseattle@fmmaseattle.com

4835 E. Cactus Road, Ste. 440
Scottsdale, AZ 85254
Phone: (602) 547-2909
Fax: (602) 547-2906

**OVERVIEW OF COMPONENT TESTS OF PRODUCER MILK
AT THE FARM LEVEL**

**PACIFIC NORTHWEST AND ARIZONA
FEDERAL MILK MARKETING ORDERS**

2018

April 2020

In accordance with Federal civil rights law and U.S. Department of Agriculture (USDA) civil rights regulations and policies, the USDA, its Agencies, offices, and employees, and institutions participating in or administering USDA programs are prohibited from discriminating based on race, color, national origin, religion, sex, gender identity (including gender expression), sexual orientation, disability, age, marital status, family/parental status, income derived from a public assistance program, political beliefs, or reprisal or retaliation for prior civil rights activity, in any program or activity conducted or funded by USDA (not all bases apply to all programs). Remedies and complaint filing deadlines vary by program or incident.

Persons with disabilities who require alternative means of communication for program information(e.g., Braille, large print, audio tape, American Sign Language, etc.) should contact the responsible Agency or USDA's TARGET Center at (202) 720-2600 (voice and TTY) or contact USDA through the Federal Relay Service at (800) 877-8339. Additionally, program information may be made available in languages other than English.

To file a program discrimination complaint, complete the USDA Program Discrimination Complaint Form, AD-3027, found online at [How to File a Program Discrimination Complaint](#) and at any USDA office or write a letter addressed to USDA and provide in the letter all of the information requested in the form. To request a copy of the complaint form, call (866) 632-9992. Submit your completed form or letter to USDA by: (1) mail: U.S. Department of Agriculture, Office of the Assistant Secretary for Civil Rights, 1400 Independence Avenue, SW, Washington, D.C. 20250-9410; (2) fax: (202) 690-7442; or (3) email: program.intake@usda.gov.

USDA is an equal opportunity provider, employer, and lender.

OVERVIEW OF COMPONENT TESTS OF PRODUCER MILK AT THE FARM LEVEL

PACIFIC NORTHWEST AND ARIZONA FEDERAL MILK MARKETING ORDERS

2018

The following tables provide an overview of component tests of producer milk pooled on the Pacific Northwest (FO 124) and Arizona (FO 131) Federal Milk Marketing Orders. The tables summarize average tests by order, month, year, region, size-range of production, and long term trends. Producer milk values are also calculated using Federal order minimum producer prices for the respective orders at 3.5% butterfat and at test. All test and value averages are weighted averages.

The farm level data included in these tables comprises all producers and producer milk pooled on the Pacific Northwest and Arizona Orders. The data was collected from producer payrolls submitted by handlers to the market administrator's office. Components available for the Pacific Northwest Order are butterfat, protein, and other solids. Other solids are lactose and minerals. The component for the Arizona Order is butterfat. In certain months, milk production that historically qualified to be pooled on an order may not have been pooled due to price relationships. This historically eligible producer milk is **not** included in this analysis. Large changes in producer numbers and producer milk typically indicate those months when milk was not pooled due to price relationships. Small differences may be evident between published pool information and the data shown in this overview due to the use of partially audited payroll data.

The orders' milksheds were divided into different regions when possible. The Pacific Northwest Order's milkshed was divided into four regions representing each of Oregon and Washington divided by the Cascade Mountain Range. In Oregon and Washington, the west side of the Cascade Mountain Range has more precipitation and is characterized by a milder climate than the eastern side of the states. The region east of the Cascade Mountain Range has a drier climate with warmer summers and colder winters. Arizona is very dry year round with little precipitation and relatively high temperatures where most milk is produced. Data from a small number of counties are included in the data for the defined regions based on order association, relative proximity, and/or to prevent the release of restricted data.

The regions are:

- Western Washington
- Eastern Washington (& Idaho and Utah)
- Western Oregon
- Eastern Oregon
- Arizona (& Southern California and Texas)

An index of Tables grouped by Federal order can be found on page ii.

Index of Tables

Page
Number

Pacific Northwest Order (FO 124)

Tables: T-1 Number of Producers, Producer Milk, Component Tests
and Standard Deviations: 20181
T-2 Number of Producers, Producer Milk and Component Tests
by Region: 20182
T-3a Butterfat Tests by Region: 20183
T-3b Protein Tests by Region: 20184
T-3c Other Solids Tests by Region: 20185
T-4 Component Tests by Size-Range of Producer Milk Deliveries: 20186
T-5 Producer Prices and Component Tests by Month: 20187
T-6 Producer Milk and Value by Size-Range of Producer
Milk Deliveries: 20188
T-7a Long Term Trends in Component Tests/Values, Butterfat: 2009-20189
T-7b Long Term Trends in Component Tests/Values, Protein: 2009-201810
T-7c Long Term Trends in Component Tests/Values, Other Solids: 2009-2018 ...11

Arizona Order (FO 131)

T-8 Number of Producers, Producer Milk, Component Tests
and Standard Deviations: 201812
T-9 Component Tests by Size-Range of Producer Milk Deliveries: 201813
T-10 Producer Prices and Component Tests by Month: 201814
T-11 Producer Milk and Value by Size-Range of Producer
Milk Deliveries: 201815
T-12 Long Term Trends in Component Tests/Values, Butterfat: 2009-201816

**Table T-1
Number of Producers, Producer Milk, Component Tests and Standard Deviations: 2018**

Pacific Northwest Order								
Month	No. of Producers	Producer Milk	Butterfat		Protein		Other Solids	
			Test	Standard Deviation	Test	Standard Deviation	Test	Standard Deviation
January	534	742,319,863	4.17	0.46	3.33	0.25	5.75	0.09
February	530	676,592,283	4.16	0.45	3.30	0.24	5.74	0.09
March	439	634,992,932	4.04	0.42	3.24	0.23	5.76	0.09
April	438	624,167,019	3.99	0.42	3.22	0.22	5.75	0.08
May	526	775,164,891	3.96	0.45	3.19	0.22	5.76	0.08
June	527	752,886,966	3.93	0.43	3.18	0.22	5.76	0.08
July	523	769,142,278	3.94	0.43	3.18	0.22	5.78	0.08
August	434	636,017,354	3.86	0.40	3.14	0.21	5.75	0.09
September	430	610,691,627	4.00	0.43	3.25	0.21	5.73	0.10
October	523	810,088,404	4.19	0.48	3.37	0.23	5.73	0.10
November	519	724,156,797	4.24	0.49	3.40	0.24	5.74	0.09
December	526	806,780,593	4.25	0.49	3.37	0.25	5.73	0.09
Average/Total	496	8,563,001,007	4.07	0.47	3.27	0.24	5.75	0.09

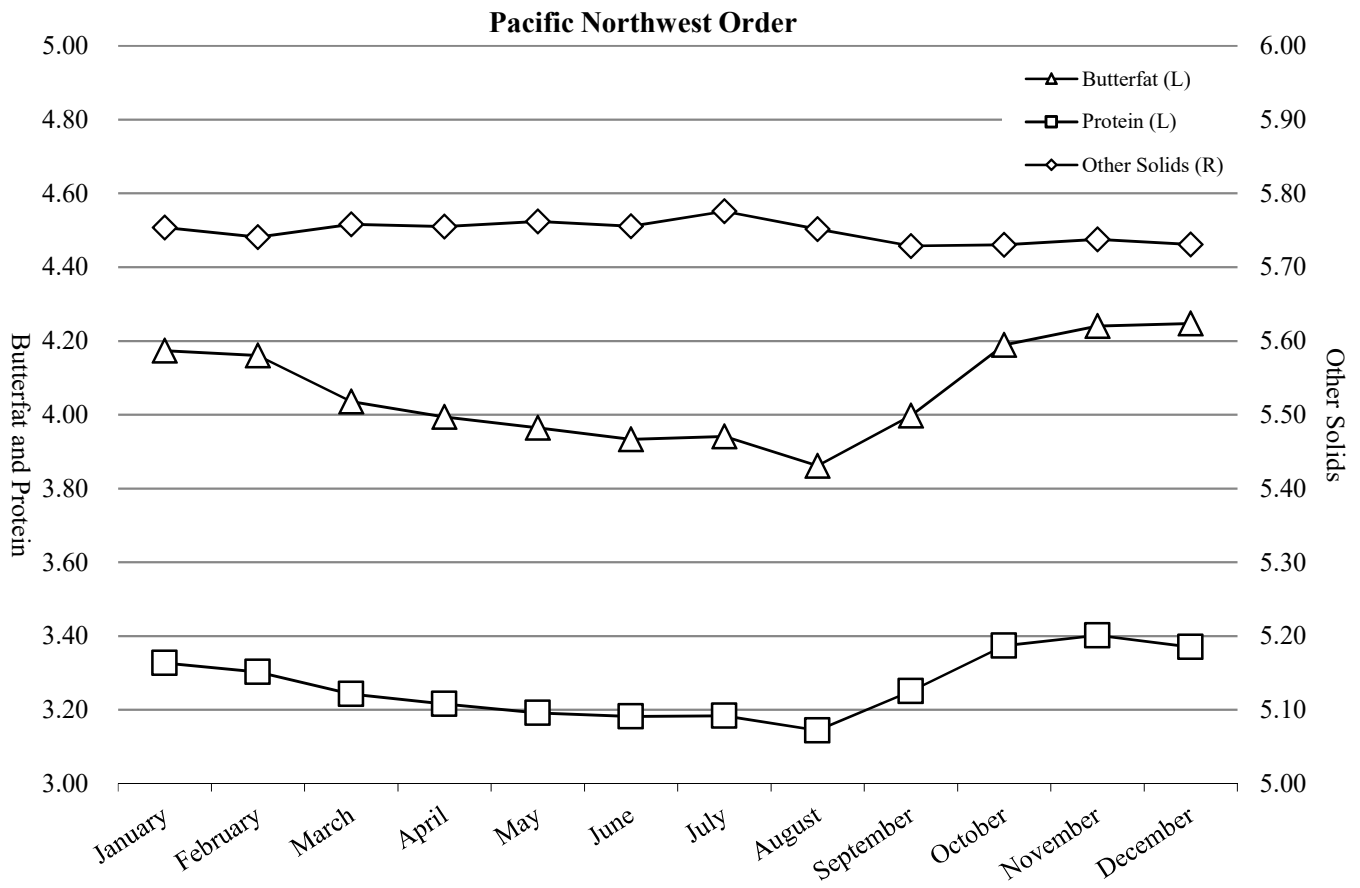


Table T-2**Number of Producers, Producer Milk and Component Tests by Region: 2018****Pacific Northwest Order**

Month	Western Washington 1/					Eastern Washington 2/				
	No. of Producers	Producer Milk	Butterfat	Protein	OS	No. of Producers	Producer Milk	Butterfat	Protein	OS
January	232	182,252,242	4.15	3.27	5.75	121	364,601,007	4.08	3.28	5.78
February	230	166,430,522	4.15	3.25	5.73	120	333,325,697	4.05	3.26	5.76
March	226	180,402,714	4.10	3.23	5.74	123	373,752,060	4.01	3.25	5.77
April	226	176,479,910	4.05	3.21	5.73	122	368,366,129	3.97	3.22	5.76
May	226	189,160,815	3.97	3.17	5.74	122	383,952,630	3.83	3.13	5.78
June	226	181,932,060	3.98	3.15	5.73	122	375,496,560	3.80	3.12	5.77
July	225	183,770,905	3.99	3.17	5.75	121	385,174,132	3.82	3.12	5.80
August	224	175,552,876	4.00	3.19	5.72	122	382,941,930	3.81	3.12	5.77
September	222	165,870,484	4.09	3.27	5.70	121	371,808,454	3.96	3.24	5.74
October	224	175,034,875	4.23	3.35	5.70	124	436,736,476	4.07	3.33	5.75
November	224	170,460,891	4.19	3.34	5.71	120	361,044,789	4.14	3.37	5.76
December	218	177,714,944	4.21	3.32	5.71	134	426,945,687	4.15	3.33	5.74
Average/Total	225	2,125,063,238	4.09	3.24	5.73	123	4,564,145,551	3.98	3.23	5.77

Month	Western Oregon					Eastern Oregon 3/				
	No. of Producers	Producer Milk	Butterfat	Protein	OS	No. of Producers	Producer Milk	Butterfat	Protein	OS
January	163	116,972,422	4.24	3.31	5.75	18	78,494,192	4.58	3.67	5.66
February	163	106,701,298	4.25	3.30	5.75	17	70,134,766	4.59	3.63	5.66
March	80	69,856,280	3.98	3.20	5.78	10	10,981,878	4.07	3.35	5.70
April	80	68,760,370	3.95	3.18	5.77	10	10,560,610	4.05	3.30	5.70
May	161	121,803,521	4.14	3.24	5.76	17	80,247,925	4.31	3.47	5.71
June	162	117,318,544	4.10	3.22	5.76	17	78,139,802	4.22	3.47	5.72
July	161	119,564,564	4.10	3.22	5.77	16	80,632,677	4.18	3.43	5.73
August	79	67,101,794	3.82	3.13	5.77	9	10,420,754	3.79	3.26	5.65
September	78	63,340,583	3.94	3.22	5.75	9	9,672,106	3.97	3.34	5.63
October	158	115,325,565	4.31	3.37	5.75	17	82,991,488	4.57	3.65	5.68
November	159	111,537,349	4.32	3.38	5.75	16	81,113,768	4.68	3.72	5.68
December	158	117,877,421	4.33	3.37	5.75	16	84,242,541	4.70	3.69	5.68
Average/Total	134	1,196,159,711	4.16	3.28	5.76	14	677,632,507	4.45	3.57	5.69

1/ Includes: Benton and Kittitas Counties, Washington.

2/ Includes: Bear Lake, Latah, Owyhee and Franklin Counties, Idaho; and Cache County, Utah.

3/ Includes: Jackson County, Oregon.

**Table T-3a
Butterfat Tests by Region: 2018**

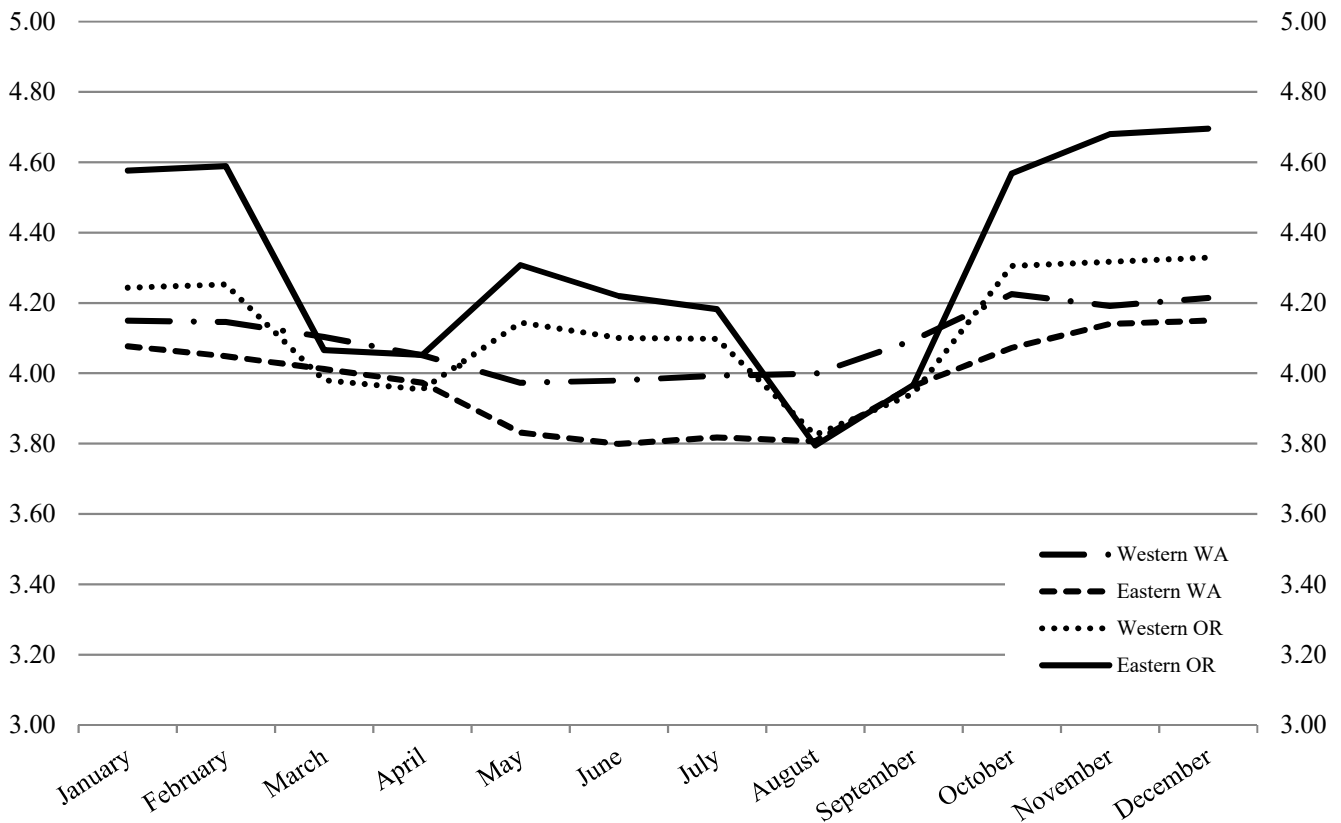
Month	Pacific Northwest Order Butterfat			
	Western WA 1/	Eastern WA 2/	Western OR	Eastern OR 3/
January	4.15	4.08	4.24	4.58
February	4.15	4.05	4.25	4.59
March	4.10	4.01	3.98	4.07
April	4.05	3.97	3.95	4.05
May	3.97	3.83	4.14	4.31
June	3.98	3.80	4.10	4.22
July	3.99	3.82	4.10	4.18
August	4.00	3.81	3.82	3.79
September	4.09	3.96	3.94	3.97
October	4.23	4.07	4.31	4.57
November	4.19	4.14	4.32	4.68
December	4.21	4.15	4.33	4.70
Average	4.09	3.98	4.16	4.45

1/ Includes: Benton and Kittitas Counties, Washington.

2/ Includes: Bear Lake, Latah, Owyhee and Franklin Counties, Idaho; and Cache County, Utah.

3/ Includes: Jackson County, Oregon.

Pacific Northwest Order: Butterfat



**Table T-3b
Protein Tests by Region: 2018**

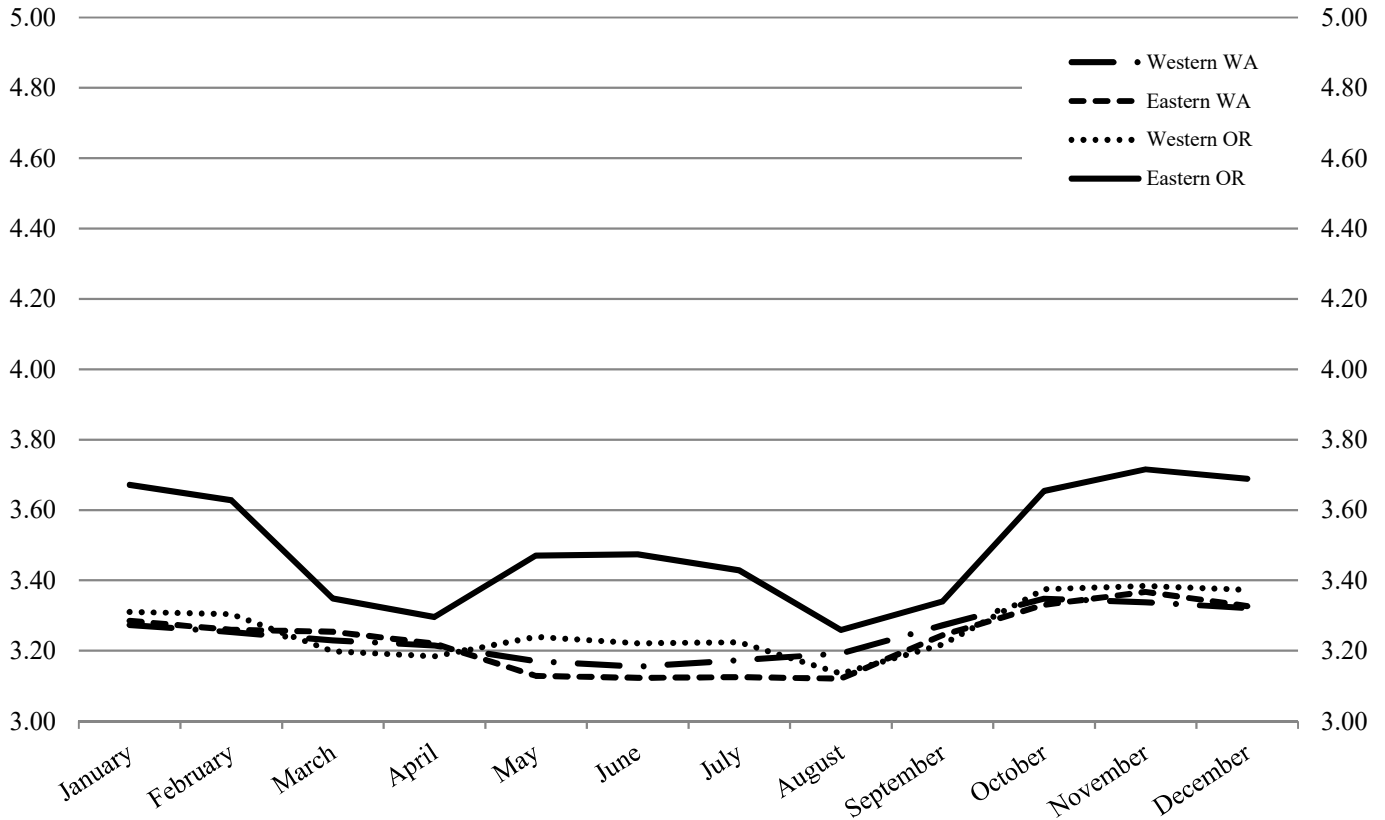
Month	Pacific Northwest Order			
	Western WA 1/	Eastern WA 2/	Western OR	Eastern OR 3/
January	3.27	3.28	3.31	3.67
February	3.25	3.26	3.30	3.63
March	3.23	3.25	3.20	3.35
April	3.21	3.22	3.18	3.30
May	3.17	3.13	3.24	3.47
June	3.15	3.12	3.22	3.47
July	3.17	3.12	3.22	3.43
August	3.19	3.12	3.13	3.26
September	3.27	3.24	3.22	3.34
October	3.35	3.33	3.37	3.65
November	3.34	3.37	3.38	3.72
December	3.32	3.33	3.37	3.69
Average	3.24	3.23	3.28	3.57

1/ Includes: Benton and Kittitas Counties, Washington.

2/ Includes: Bear Lake, Latah, Owyhee and Franklin Counties, Idaho; and Cache County, Utah.

3/ Includes: Jackson County, Oregon.

Pacific Northwest Order: Protein



**Table T-3c
Other Solids Tests by Region: 2018**

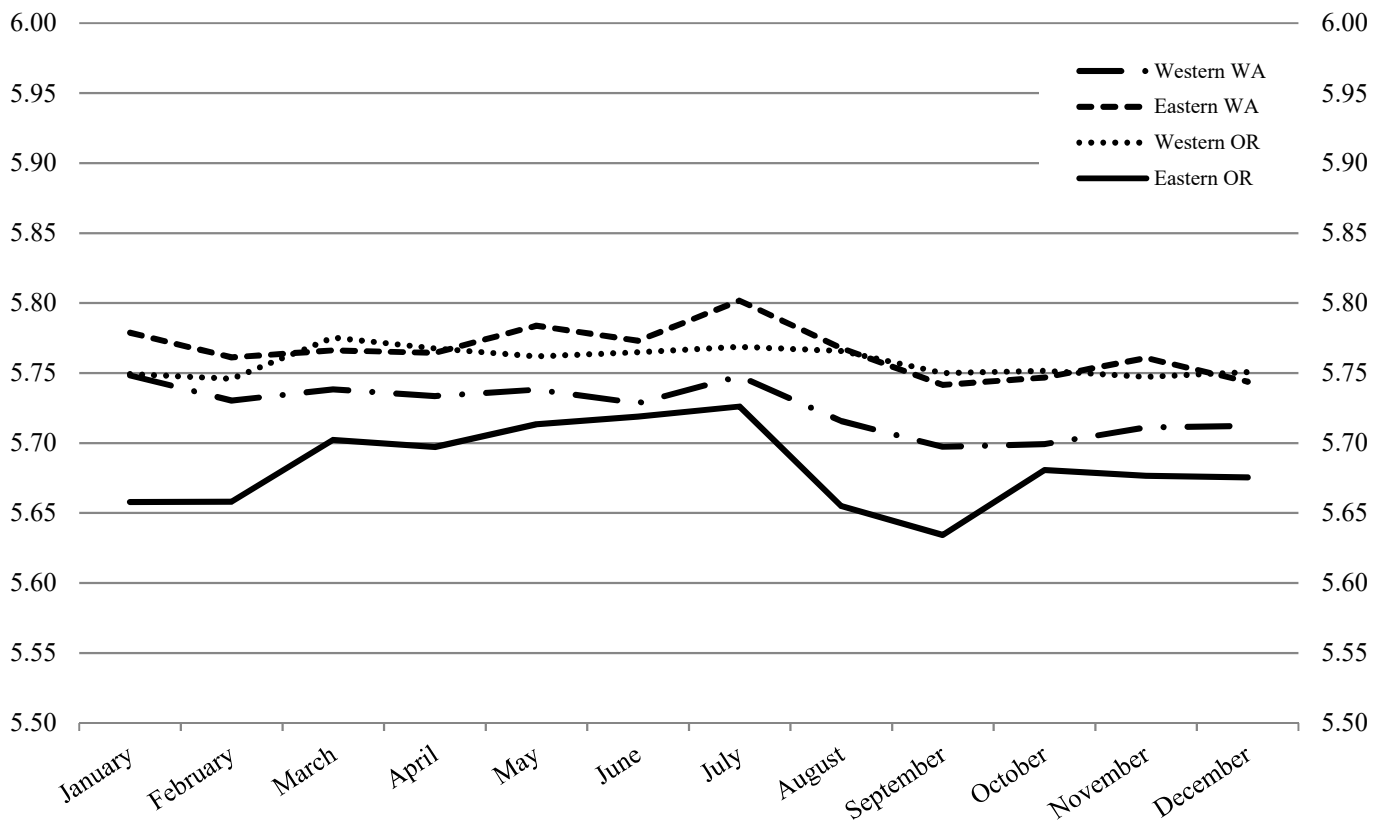
Month	Pacific Northwest Order Other Solids			
	Western WA 1/	Eastern WA 2/	Western OR	Eastern OR 3/
January	5.75	5.78	5.75	5.66
February	5.73	5.76	5.75	5.66
March	5.74	5.77	5.78	5.70
April	5.73	5.76	5.77	5.70
May	5.74	5.78	5.76	5.71
June	5.73	5.77	5.76	5.72
July	5.75	5.80	5.77	5.73
August	5.72	5.77	5.77	5.65
September	5.70	5.74	5.75	5.63
October	5.70	5.75	5.75	5.68
November	5.71	5.76	5.75	5.68
December	5.71	5.74	5.75	5.68
Average	5.73	5.77	5.76	5.69

1/ Includes: Benton and Kittitas Counties, Washington.

2/ Includes: Bear Lake, Latah, Owyhee and Franklin Counties, Idaho; and Cache County, Utah.

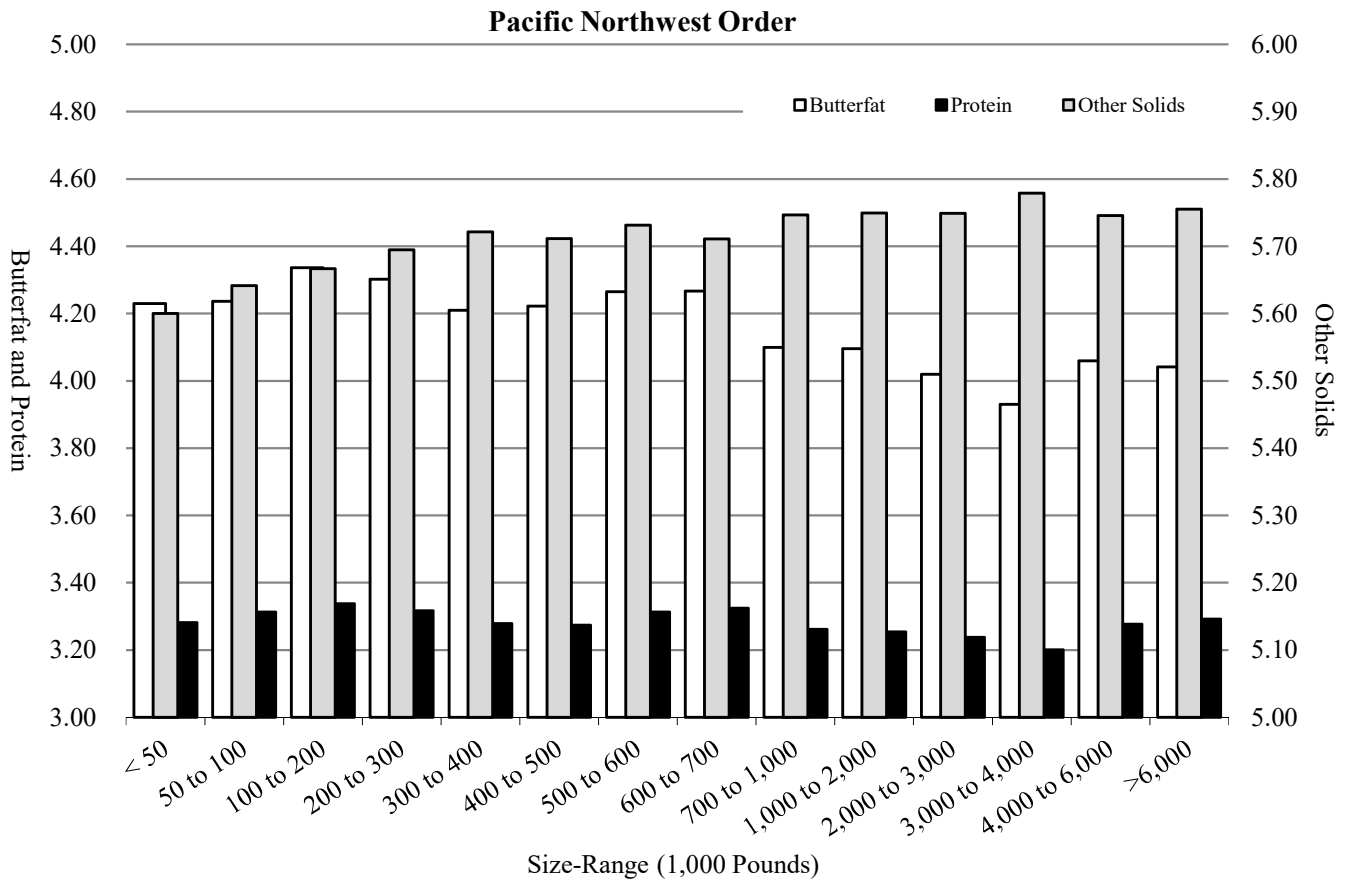
3/ Includes: Jackson County, Oregon.

Pacific Northwest Order: Other Solids



**Table T-4
Component Tests by Size-Range of Producer Milk Deliveries: 2018**

Size-Range (Pounds)		No. of Observations	Pacific Northwest Order		
Equal to or more than	Less than		Butterfat	Protein	Other Solids
0	50,000	182	4.23	3.28	5.60
50,000	100,000	402	4.24	3.31	5.64
100,000	200,000	844	4.34	3.34	5.67
200,000	300,000	597	4.30	3.32	5.69
300,000	400,000	423	4.21	3.28	5.72
400,000	500,000	348	4.22	3.27	5.71
500,000	600,000	220	4.26	3.31	5.73
600,000	700,000	224	4.27	3.32	5.71
700,000	1,000,000	542	4.10	3.26	5.75
1,000,000	2,000,000	952	4.10	3.25	5.75
2,000,000	3,000,000	474	4.02	3.24	5.75
3,000,000	4,000,000	202	3.93	3.20	5.78
4,000,000	6,000,000	236	4.06	3.28	5.75
6,000,000		303	4.04	3.29	5.76
Total/Average		5,949	4.07	3.27	5.75



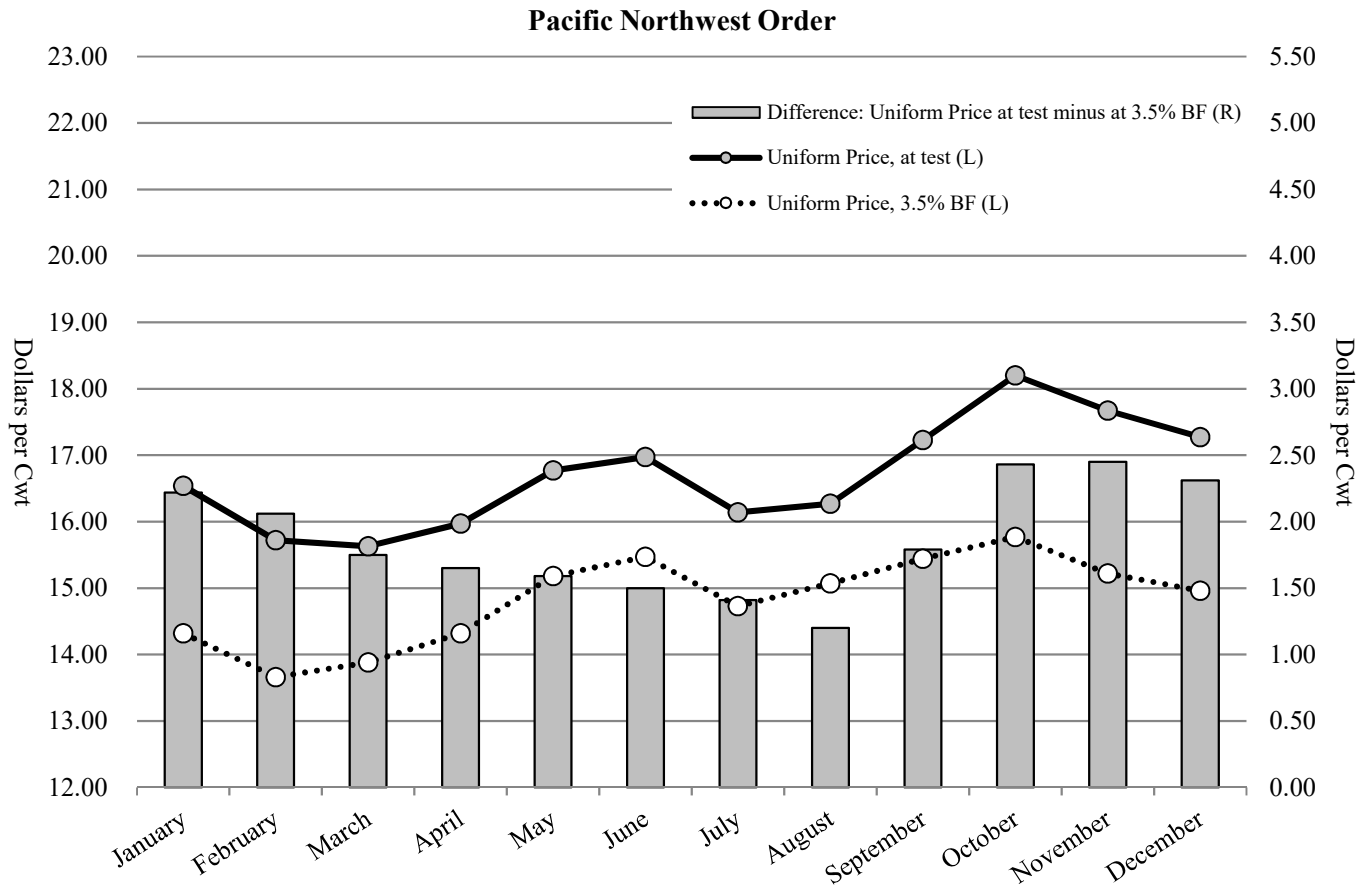
**Table T-5
 Producer Prices and Component Tests by Month: 2018**

Pacific Northwest Order

Month	A		B		Difference		Butterfat		Protein		Other Solids		Producer Price Differential 1/
	Uniform Price, 3.5% BF	Value, at test *		(B - A)									
	- - - - \$ / Cwt - - - -				- \$ / Lb -	- % -	- \$ / Lb -	- % -	- \$ / Lb -	- % -	- \$ / Cwt -		
January	14.32	16.54	2.22	2.4531	4.17	1.6612	3.33	0.0787	5.75	0.32			
February	13.66	15.72	2.06	2.3490	4.16	1.6265	3.30	0.0550	5.74	0.26			
March	13.88	15.63	1.75	2.4273	4.04	1.8066	3.24	0.0556	5.76	(0.34)			
April	14.32	15.97	1.65	2.5113	3.99	1.7810	3.22	0.0619	5.75	(0.15)			
May	15.18	16.77	1.59	2.6239	3.96	1.8609	3.19	0.0742	5.76	0.00			
June	15.47	16.97	1.50	2.6692	3.93	1.7478	3.18	0.1128	5.76	0.26			
July	14.73	16.14	1.41	2.5287	3.94	1.4827	3.18	0.1422	5.78	0.63			
August	15.07	16.27	1.20	2.6009	3.86	1.6245	3.14	0.1741	5.75	0.12			
September	15.44	17.23	1.79	2.5442	4.00	2.0029	3.25	0.2098	5.73	(0.65)			
October	15.77	18.20	2.43	2.5551	4.19	1.7185	3.37	0.2553	5.73	0.24			
November	15.22	17.67	2.45	2.5385	4.24	1.3419	3.40	0.2714	5.74	0.78			
December	14.96	17.27	2.31	2.5080	4.25	1.1417	3.37	0.2775	5.73	1.18			
Wtd. Average	14.86	16.74	1.88	2.5267	4.07	1.6358	3.27	0.1502	5.75	0.25			
Percent of FO Value			61%		32%		5%		2%				

* Similar to the Uniform Price, at test, but may differ due to the use of partially audited payroll data.

1/ The producer price differentials for the Pacific Northwest Order are subject to applicable location adjustments.



**Table T-6
 Producer Milk and Value by Size-Range of Producer Milk Deliveries: 2018**

Pacific Northwest Order

Size-Range		Producer Milk	Percent of Producer Milk	No. of Observations	Percent of Observations	Producer Milk Value at Test 1/	Value, at test
Equal to or more than	Less than						
- - - Pounds - - -		- Pounds -	- % -		- % -	- Dollars -	- \$ / Cwt -
0	50,000	6,068,802	0.1%	182	3.1%	1,036,356.47	17.08
50,000	100,000	30,992,561	0.4%	402	6.8%	5,342,166.25	17.24
100,000	200,000	122,723,253	1.4%	844	14.2%	21,458,740.11	17.49
200,000	300,000	148,545,472	1.7%	597	10.0%	25,799,580.54	17.37
300,000	400,000	147,161,245	1.7%	423	7.1%	25,150,577.32	17.09
400,000	500,000	155,188,992	1.8%	348	5.8%	26,517,379.05	17.09
500,000	600,000	120,728,017	1.4%	220	3.7%	20,933,054.48	17.34
600,000	700,000	145,546,194	1.7%	224	3.8%	25,208,456.97	17.32
700,000	1,000,000	451,461,013	5.3%	542	9.1%	75,920,008.34	16.82
1,000,000	2,000,000	1,412,550,985	16.5%	952	16.0%	236,650,601.81	16.75
2,000,000	3,000,000	1,136,495,810	13.3%	474	8.0%	188,461,670.02	16.58
3,000,000	4,000,000	696,948,304	8.1%	202	3.4%	113,377,934.30	16.27
4,000,000	6,000,000	1,171,138,866	13.7%	236	4.0%	195,686,931.98	16.71
6,000,000		2,817,451,493	32.9%	303	5.1%	471,853,520.06	16.75
Total/Average		8,563,001,007	100.0%	5,949	100.0%	1,433,396,977.70	16.74

1/ Based on Federal order producer minimum prices. Producer prices are subject to location adjustments.

Pacific Northwest Order

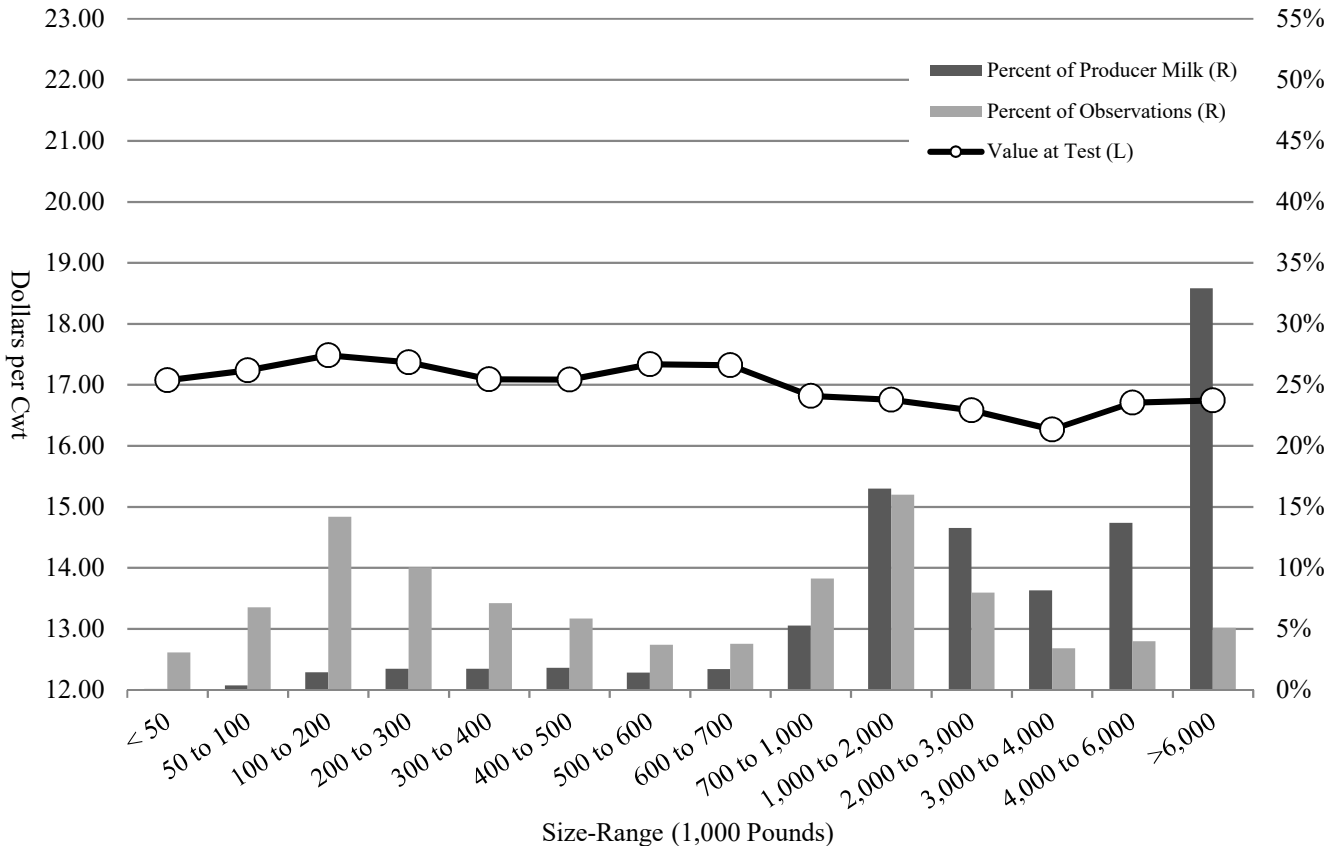


Table T-7a
Long Term Trends in Component Tests/Values, Butterfat: 2009-2018

Pacific Northwest Order

Year	Average No. of Producers	Percent of FO Value Contributed by Butterfat	Test	Standard Deviation	Minimum	Maximum
2009	624	38%	3.71	0.41	2.62	5.83
2010	632	43%	3.73	0.43	2.74	6.10
2011	610	40%	3.77	0.43	2.70	6.21
2012	532	35%	3.81	0.42	2.78	6.20
2013	568	32%	3.88	0.44	2.84	6.07
2014	534	38%	3.88	0.45	2.72	6.22
2015	479	54%	3.92	0.46	2.47	6.67
2016	492	57%	3.95	0.45	2.80	6.30
2017	468	58%	3.99	0.45	2.64	5.87
2018	496	61%	4.07	0.47	2.60	6.10
10 Year Simple Average	544	46%	3.87	0.44	2.69	6.16

Pacific Northwest Order: Butterfat

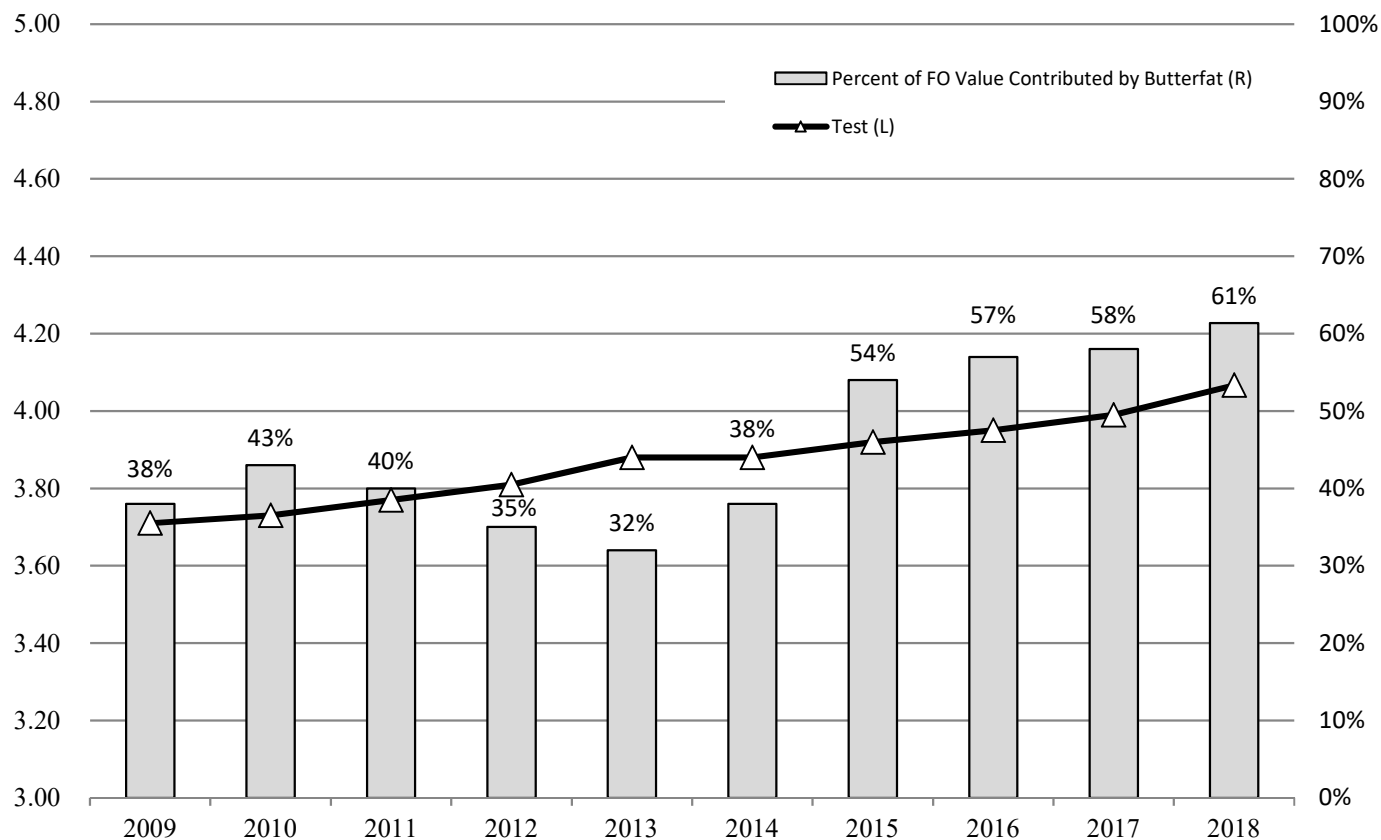


Table T-7b
Long Term Trends in Component Tests/Values, Protein: 2009-2018

Pacific Northwest Order

Year	Average No. of Producers	Percent of FO Value Contributed by Protein	Test	Standard Deviation	Minimum	Maximum
2009	624	56%	3.11	0.22	2.63	4.09
2010	632	45%	3.15	0.22	2.13	4.40
2011	610	46%	3.17	0.22	2.58	4.43
2012	532	52%	3.17	0.22	2.47	4.31
2013	568	52%	3.22	0.22	2.58	4.30
2014	534	49%	3.20	0.22	2.60	4.56
2015	479	40%	3.20	0.23	2.58	4.34
2016	492	41%	3.22	0.23	2.45	4.42
2017	468	33%	3.24	0.23	2.62	4.33
2018	496	32%	3.27	0.24	2.66	4.35
10 Year Simple Average	544	45%	3.19	0.23	2.53	4.35

Pacific Northwest Order: Protein

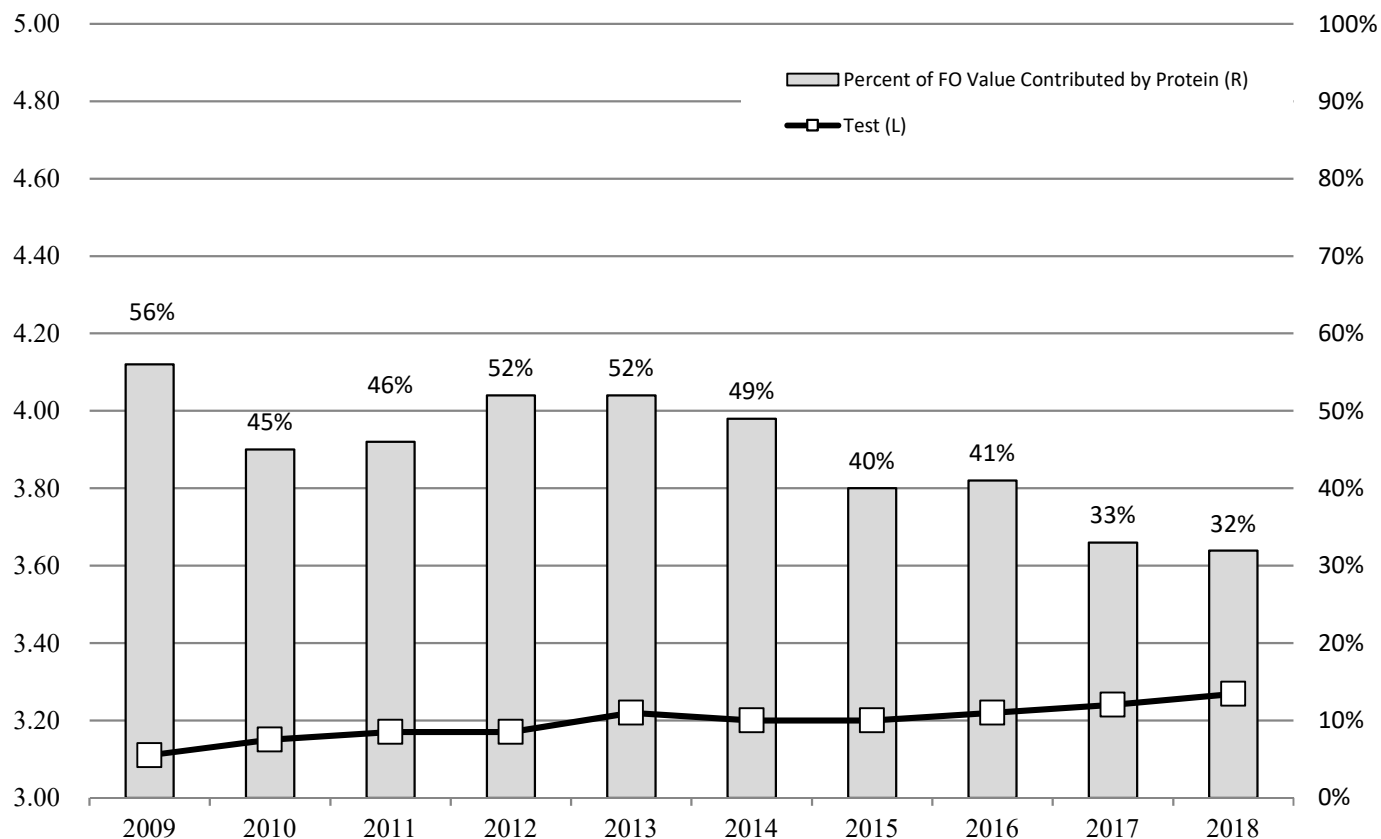


Table T-7c
Long Term Trends in Component Tests/Values, Other Solids: 2009-2018

Pacific Northwest Order						
Year	Average No. of Producers	Percent of FO Value Contributed by Other Solids	Test	Standard Deviation	Minimum	Maximum
2009	624	3%	5.69	0.09	4.96	5.87
2010	632	6%	5.71	0.09	4.71	5.92
2011	610	10%	5.73	0.09	4.86	6.01
2012	532	13%	5.74	0.09	4.62	5.95
2013	568	11%	5.73	0.08	4.67	5.97
2014	534	11%	5.72	0.08	4.78	5.91
2015	479	6%	5.73	0.09	5.20	5.97
2016	492	3%	5.73	0.09	5.12	5.93
2017	468	8%	5.74	0.09	5.24	5.95
2018	496	5%	5.75	0.09	5.20	5.95
10 Year Simple Average	544	8%	5.73	0.09	4.94	5.94

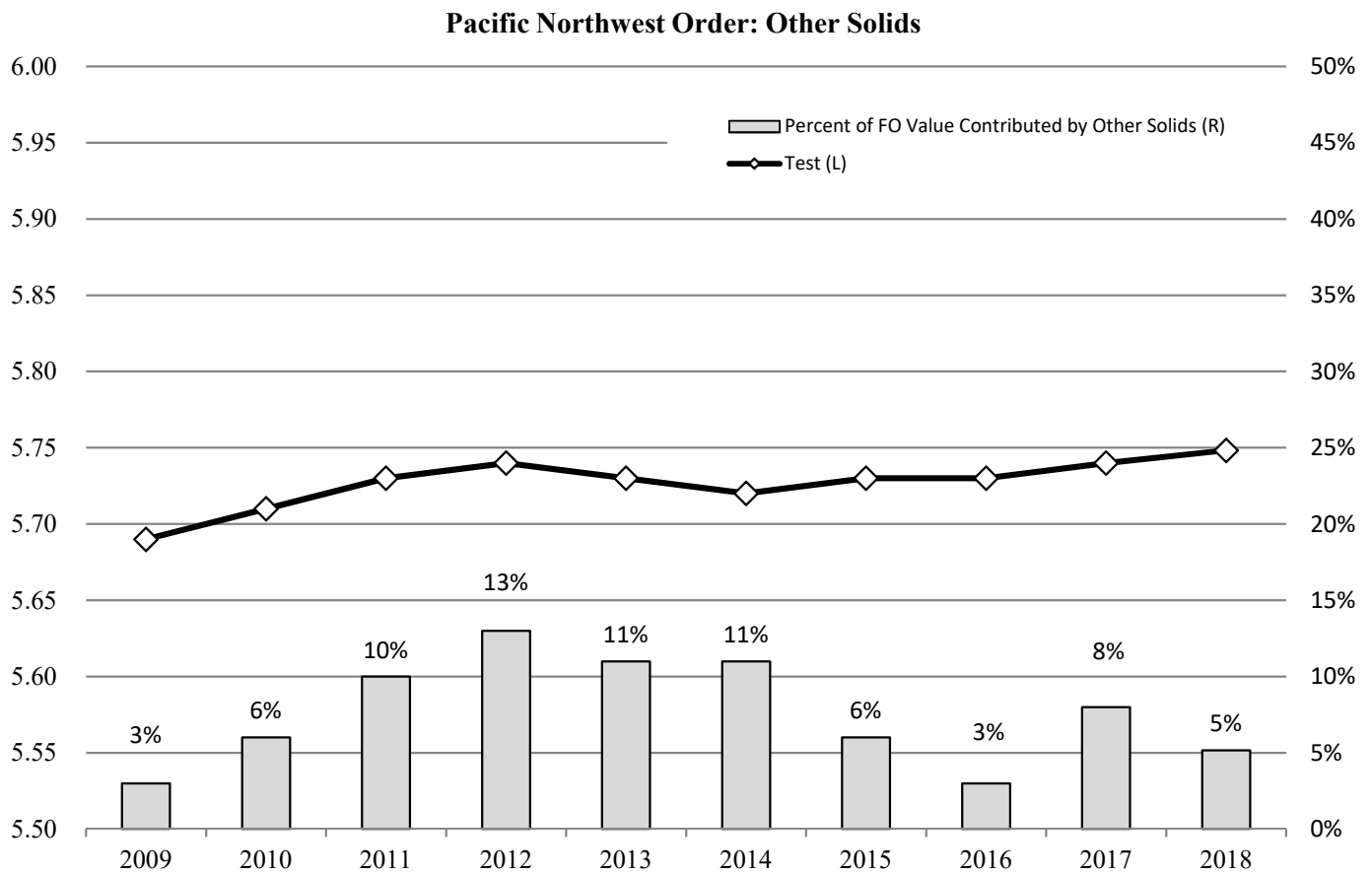
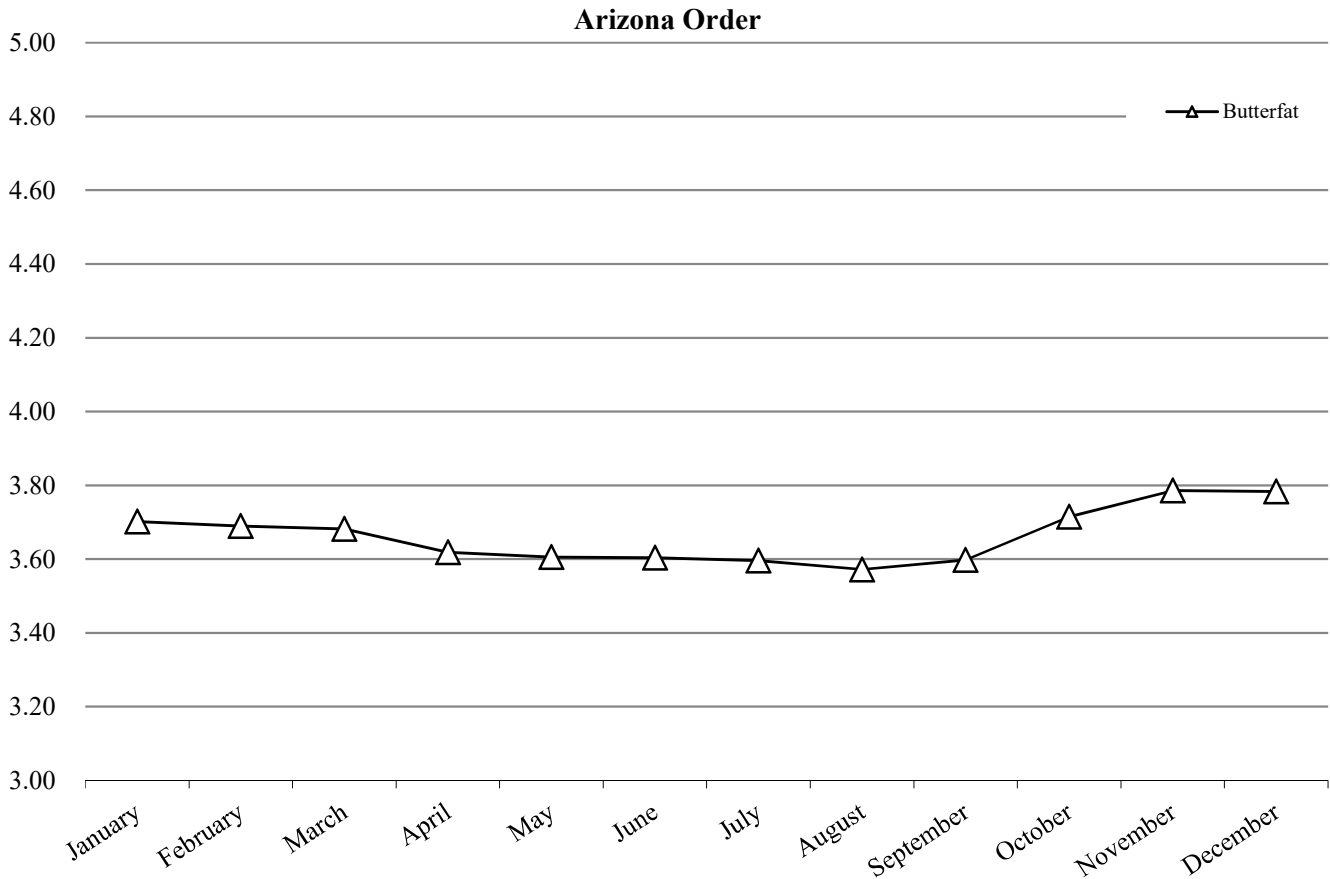


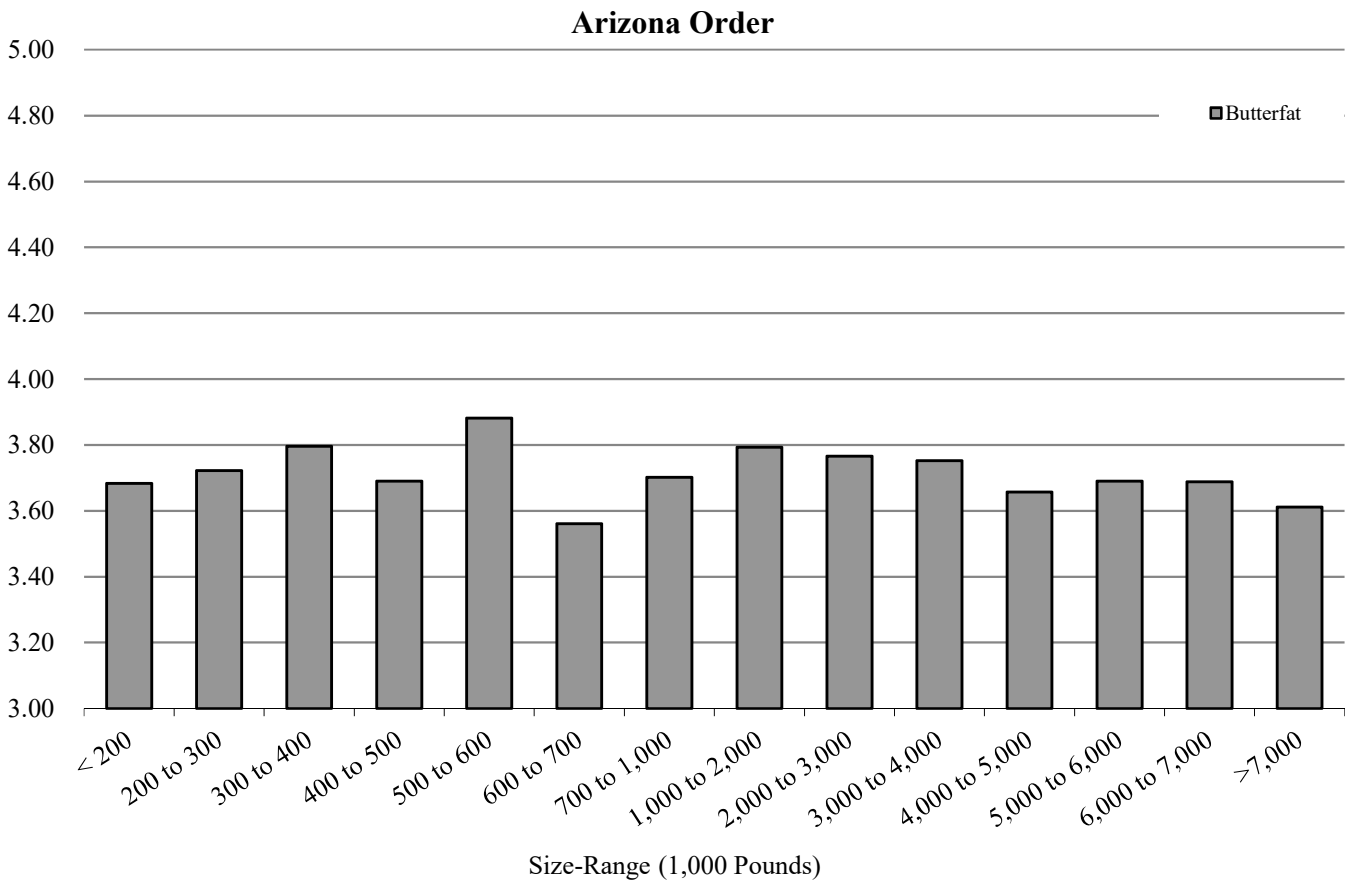
Table T-8
Number of Producers, Producer Milk, Component Tests and Standard Deviations: 2018

Arizona Order				
Month	No. of Producers	Producer Milk	Butterfat	
			Test	Standard Deviation
January	89	483,025,929	3.70	0.31
February	86	428,233,490	3.69	0.30
March	82	441,591,207	3.68	0.29
April	80	442,217,701	3.62	0.29
May	76	459,346,473	3.61	0.29
June	74	417,807,771	3.60	0.29
July	82	427,694,801	3.60	0.28
August	82	402,179,412	3.57	0.30
September	78	353,868,720	3.60	0.31
October	82	419,185,775	3.71	0.30
November	82	414,263,200	3.79	0.33
December	82	444,569,583	3.78	0.38
Average/Total	81	5,133,984,062	3.66	0.32



**Table T-9
Component Tests by Size-Range of Producer Milk Deliveries: 2018**

Size-Range (Pounds)		No. of Observations	Butterfat
Equal to or more than	Less than		
0	200,000	19	3.68
200,000	300,000	9	3.72
300,000	400,000	2	3.80
400,000	500,000	5	3.69
500,000	600,000	2	3.88
600,000	700,000	9	3.56
700,000	1,000,000	32	3.70
1,000,000	2,000,000	139	3.79
2,000,000	3,000,000	117	3.77
3,000,000	4,000,000	116	3.75
4,000,000	5,000,000	90	3.66
5,000,000	6,000,000	126	3.69
6,000,000	7,000,000	107	3.69
7,000,000		202	3.61
Total/Average		975	3.66



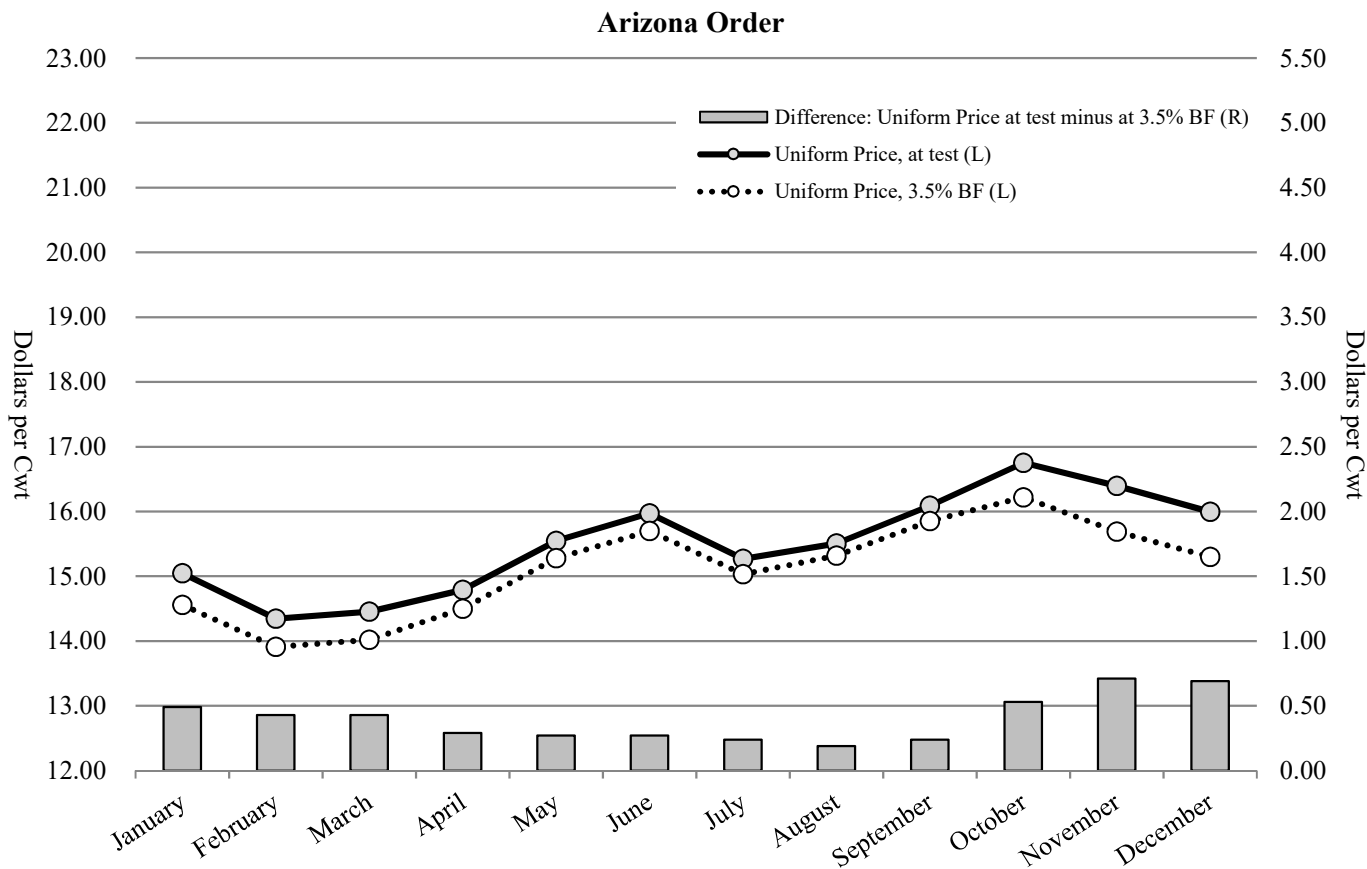
**Table T-10
 Producer Prices and Component Tests by Month: 2018**

Arizona Order

Month	A	B	Difference (B - A)	Butterfat 1/		Skim 1/	
	Uniform Price, 3.5% BF	Value, at test *		- \$ / Lb -	- % -	- \$ / Cwt -	- % -
January	14.56	15.05	0.49	2.4629	3.70	6.16	96.30
February	13.91	14.34	0.43	2.3740	3.69	5.80	96.31
March	14.02	14.45	0.43	2.4189	3.68	5.76	96.32
April	14.50	14.79	0.29	2.5045	3.62	5.94	96.38
May	15.28	15.55	0.27	2.6087	3.61	6.37	96.39
June	15.70	15.97	0.27	2.6659	3.60	6.60	96.40
July	15.03	15.27	0.24	2.5546	3.60	6.31	96.40
August	15.32	15.51	0.19	2.5968	3.57	6.46	96.43
September	15.85	16.09	0.24	2.5622	3.60	7.13	96.40
October	16.22	16.75	0.53	2.5582	3.71	7.53	96.29
November	15.69	16.40	0.71	2.5469	3.79	7.02	96.21
December	15.30	15.99	0.69	2.5157	3.78	6.73	96.22
Wtd. Average	15.09	15.49	0.40	2.5283	3.66	6.46	96.34
Percent of FO Value				60%		40%	

* Similar to the Uniform Price, at test, but may differ due to the use of partially audited payroll data.

1/ The producer prices for the Arizona Order are subject to applicable location adjustments.



**Table T-11
 Producer Milk and Value by Size-Range of Producer Milk Deliveries: 2018**

Arizona Order

Size-Range		Producer Milk	Percent of Producer Milk	No. of Observations	Percent of Observations	Producer Milk Value at Test 1/	Value, at test
Equal to or more than	Less than						
- - - Pounds - - -		- Pounds -	- % -		- % -	- Dollars -	- \$ / Cwt -
0	200,000	1,609,230	0.03%	19	1.95%	243,888.31	15.16
200,000	300,000	2,186,194	0.04%	9	0.92%	341,343.54	15.61
300,000	400,000	671,330	0.01%	2	0.21%	105,109.91	15.66
400,000	500,000	2,196,900	0.04%	5	0.51%	334,814.28	15.24
500,000	600,000	1,026,360	0.02%	2	0.21%	162,208.50	15.80
600,000	700,000	5,955,946	0.12%	9	0.92%	920,012.71	15.45
700,000	1,000,000	28,745,867	0.56%	32	3.28%	4,529,732.60	15.76
1,000,000	2,000,000	212,351,357	4.14%	139	14.26%	33,709,459.67	15.87
2,000,000	3,000,000	287,664,927	5.60%	117	12.00%	45,095,605.63	15.68
3,000,000	4,000,000	402,811,368	7.85%	116	11.90%	63,459,269.46	15.75
4,000,000	5,000,000	411,738,595	8.02%	90	9.23%	64,586,334.28	15.69
5,000,000	6,000,000	691,914,968	13.48%	126	12.92%	107,226,487.52	15.50
6,000,000	7,000,000	687,492,171	13.39%	107	10.97%	106,290,455.48	15.46
7,000,000		2,397,618,849	46.70%	202	20.72%	368,319,806.93	15.36
Total/Average		5,133,984,062	100.00%	975	100.00%	795,324,528.82	15.49

1/ Based on Federal order minimum producer prices. Producer prices are subject to location adjustments.

Arizona Order

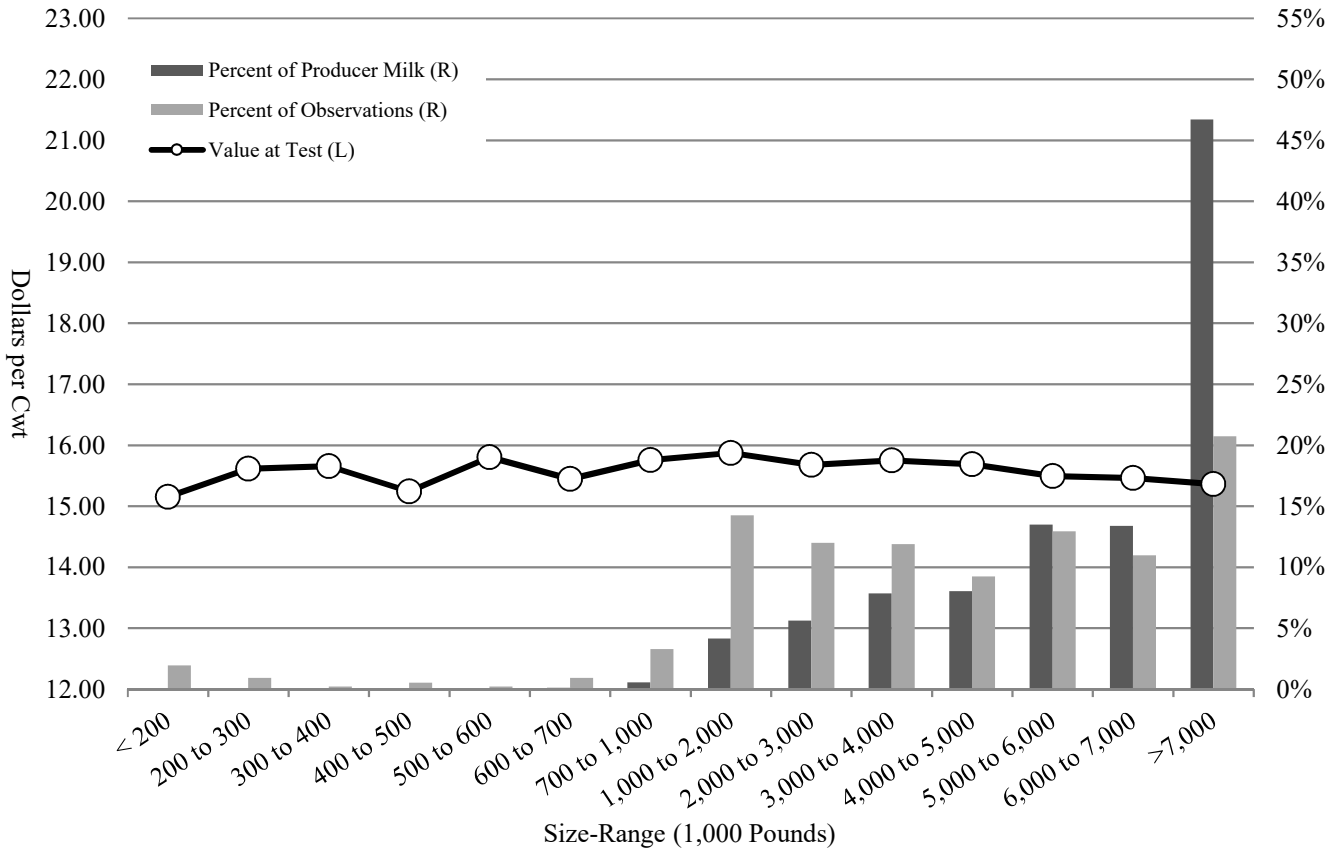


Table T-12

Long Term Trends in Component Tests/Values, Butterfat: 2009-2018

Arizona Order

Year	Average No. of Producers	Percent of FO Value Contributed by Butterfat	Test	Standard Deviation	Minimum	Maximum
2009	97	36%	3.49	0.33	2.59	5.60
2010	96	41%	3.50	0.36	2.36	5.45
2011	100	39%	3.55	0.33	2.48	4.99
2012	95	35%	3.55	0.33	2.98	5.46
2013	92	30%	3.52	0.32	2.90	5.09
2014	92	35%	3.47	0.31	2.91	4.94
2015	95	50%	3.47	0.31	2.46	5.02
2016	91	55%	3.54	0.31	2.87	5.10
2017	89	57%	3.63	0.30	2.92	5.08
2018	81	60%	3.66	0.32	2.74	5.16
10 Year Simple Average	93	44%	3.54	0.32	2.72	5.19

Arizona Order: Butterfat

