

UNITED STATES DEPARTMENT OF AGRICULTURE

Agricultural Marketing Service

Dairy Programs

FEDERAL MILK ORDERS 124 & 131

1930-220th Street SE, Ste. 102
Bothell, WA 98021
Phone: (425) 487-6009
Fax: (425) 487-2775
Email: fmmaseattle@fmmaseattle.com

4835 E. Cactus Road, Ste. 365
Scottsdale, AZ 85254
Phone: (602) 547-2909
Fax: (602) 547-2906

**OVERVIEW OF COMPONENT TESTS OF PRODUCER MILK
AT THE FARM LEVEL**

**PACIFIC NORTHWEST AND ARIZONA
FEDERAL MILK MARKETING ORDERS**

2017

July 2018

The U.S. Department of Agriculture (USDA) prohibits discrimination in all its programs and activities on the basis of race, color, national origin, age, disability, and where applicable, sex, marital status, familial status, parental status, religion, sexual orientation, genetic information, political beliefs, reprisal, or because all or part of an individual's income is derived from any public assistance program. (Not all prohibited bases apply to all programs.) Persons with disabilities who require alternative means for communication of program information (Braille, large print, audiotape, etc.) should contact USDA's TARGET Center at (202) 720-2600 (voice and TDD). To file a complaint of discrimination, write to USDA, Director, Office of Civil Rights, 1400 Independence Avenue, S.W., Washington, D.C. 20250-9410, or call (800) 795-3272 (voice) or (202) 720-6382 (TDD). USDA is an equal opportunity provider and employer.

OVERVIEW OF COMPONENT TESTS OF PRODUCER MILK AT THE FARM LEVEL

PACIFIC NORTHWEST AND ARIZONA FEDERAL MILK MARKETING ORDERS

2017

The following tables provide an overview of component tests of producer milk pooled on the Pacific Northwest (FO 124) and Arizona (FO 131) Federal Milk Marketing Orders. The tables summarize average tests by order, month, year, region, size-range of production, and long term trends. Producer milk values are also calculated using Federal order minimum producer prices for the respective orders at 3.5% butterfat and at test. All test and value averages are weighted averages.

The farm level data included in these tables comprises all producers and producer milk pooled on the Pacific Northwest and Arizona Orders. The data was collected from producer payrolls submitted by handlers to the market administrator's office. Components available for the Pacific Northwest Order are butterfat, protein, and other solids. Other solids are lactose and minerals. The component for the Arizona Order is butterfat. In certain months, milk production that historically qualified to be pooled on an order may not have been pooled due to price relationships. This historically eligible producer milk is **not** included in this analysis. Large changes in producer numbers and producer milk typically indicate those months when milk was not pooled due to price relationships. Small differences may be evident between published pool information and the data shown in this overview due to the use of partially audited payroll data.

The orders' milksheds were divided into different regions when possible. The Pacific Northwest Order's milkshed was divided into four regions representing each of Oregon and Washington divided by the Cascade Mountain Range. In Oregon and Washington, the west side of the Cascade Mountain Range has more precipitation and is characterized by a milder climate than the eastern side of the states. The region east of the Cascade Mountain Range has a drier climate with warmer summers and colder winters. Arizona is very dry year round with little precipitation and relatively high temperatures where most milk is produced. Data from a small number of counties of other states are included in the data for the defined regions based on order association, relative proximity, and/or to prevent the release of restricted data.

The regions are:

- Western Washington (& Latah County, Idaho)
- Eastern Washington (& Bear Lake and Franklin Counties, Idaho, and Utah)
- Western Oregon
- Eastern Oregon
- Arizona (& Southern California and Texas)

An index of Tables grouped by Federal order can be found on page ii.

Index of Tables

Page
Number

Pacific Northwest Order (FO 124)

Tables:	T-1	Number of Producers, Producer Milk, Component Tests and Standard Deviations: 2017	1
	T-2	Number of Producers, Producer Milk and Component Tests by Region: 2017	2
	T-3a	Butterfat Tests by Region: 2017	3
	T-3b	Protein Tests by Region: 2017	4
	T-3c	Other Solids Tests by Region: 2017	5
	T-4	Component Tests by Size-Range of Producer Milk Deliveries: 2017	6
	T-5	Producer Prices and Component Tests by Month: 2017	7
	T-6	Producer Milk and Value by Size-Range of Producer Milk Deliveries: 2017	8
	T-7a	Long Term Trends in Component Tests, Butterfat: 2008-2017	9
	T-7b	Long Term Trends in Component Tests, Protein: 2008-2017	10
	T-7c	Long Term Trends in Component Tests, Other Solids: 2008-2017	11

Arizona Order (FO 131)

T-8	Number of Producers, Producer Milk, Component Tests and Standard Deviations: 2017	12
T-9	Component Tests by Size-Range of Producer Milk Deliveries: 2017	13
T-10	Producer Prices and Component Tests by Month: 2017	14
T-11	Producer Milk and Value by Size-Range of Producer Milk Deliveries: 2017	15
T-12	Long Term Trends in Component Tests, Butterfat: 2008-2017	16

Table T-1

Number of Producers, Producer Milk, Component Tests and Standard Deviations: 2017

Pacific Northwest Order								
Month	No. of Producers	Producer Milk	Butterfat		Protein		Other Solids	
			Test	Standard Deviation	Test	Standard Deviation	Test	Standard Deviation
January	446	603,982,709	4.13	0.47	3.32	0.23	5.73	0.09
February	446	551,665,731	4.08	0.44	3.27	0.22	5.75	0.09
March	445	619,178,089	4.01	0.43	3.24	0.21	5.75	0.08
April	446	609,623,630	3.95	0.42	3.22	0.20	5.75	0.08
May	445	633,060,445	3.88	0.40	3.17	0.19	5.75	0.08
June	440	615,884,794	3.82	0.38	3.14	0.19	5.75	0.08
July	532	759,365,897	3.90	0.43	3.16	0.22	5.73	0.08
August	534	750,040,948	3.93	0.44	3.18	0.23	5.73	0.08
September	541	717,102,885	4.01	0.46	3.26	0.23	5.72	0.09
October	448	609,235,706	4.05	0.44	3.33	0.23	5.73	0.10
November	444	581,631,462	4.12	0.44	3.36	0.24	5.75	0.10
December	444	610,208,317	4.12	0.44	3.32	0.24	5.77	0.10
Average/Total	468	7,660,980,613	3.99	0.45	3.24	0.23	5.74	0.09

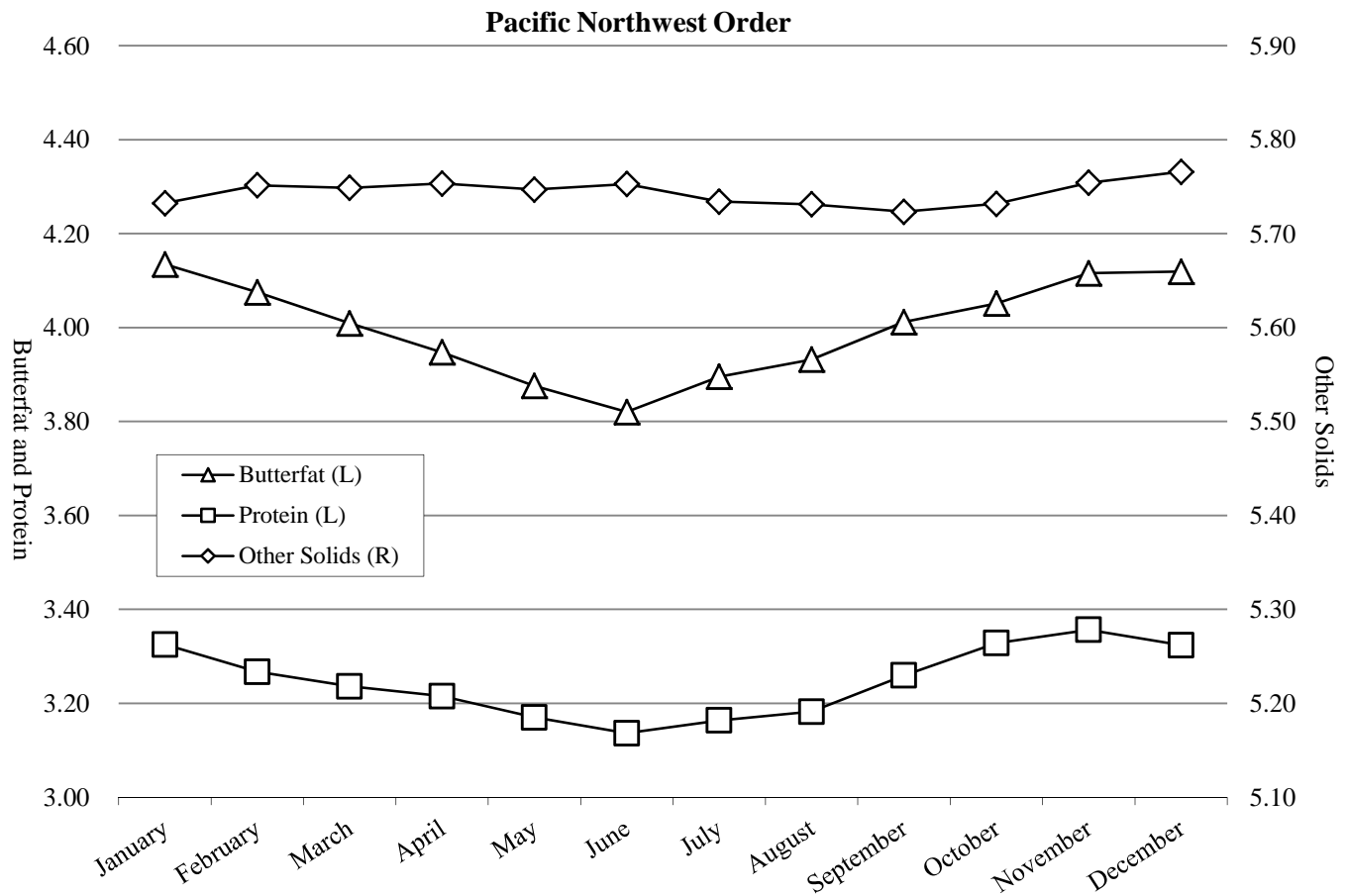


Table T-2**Number of Producers, Producer Milk and Component Tests by Region: 2017****Pacific Northwest Order**

Month	Western Washington 1/					Eastern Washington 2/				
	No. of Producers	Producer Milk	Butterfat	Protein	OS	No. of Producers	Producer Milk	Butterfat	Protein	OS
January	238	177,679,766	4.14	3.30	5.72	115	344,306,105	4.16	3.35	5.74
February	238	163,821,036	4.09	3.26	5.74	115	311,912,593	4.10	3.29	5.75
March	237	183,413,173	4.05	3.24	5.73	115	350,711,075	4.01	3.25	5.75
April	238	180,544,381	4.01	3.21	5.73	116	347,174,975	3.92	3.22	5.76
May	238	187,447,978	3.97	3.18	5.72	116	362,181,478	3.83	3.17	5.76
June	236	180,679,744	3.94	3.16	5.72	113	355,456,301	3.77	3.13	5.77
July	234	189,406,442	3.95	3.16	5.71	111	366,966,657	3.76	3.08	5.76
August	236	186,044,451	3.96	3.18	5.70	113	365,323,876	3.80	3.10	5.75
September	235	175,301,231	4.01	3.23	5.70	122	352,908,832	3.89	3.20	5.75
October	233	174,064,653	4.10	3.32	5.71	124	357,974,929	4.05	3.35	5.74
November	232	166,183,993	4.17	3.34	5.73	121	340,085,660	4.12	3.38	5.76
December	232	174,826,292	4.16	3.31	5.75	121	356,814,600	4.12	3.34	5.77
Average/Total	236	2,139,413,140	4.04	3.24	5.72	117	4,211,817,081	3.96	3.24	5.76

Month	Western Oregon					Eastern Oregon				
	No. of Producers	Producer Milk	Butterfat	Protein	OS	No. of Producers	Producer Milk	Butterfat	Protein	OS
January	82	71,778,174	4.01	3.24	5.76	11	10,218,664	4.11	3.47	5.68
February	82	66,697,791	3.95	3.17	5.77	11	9,234,311	4.06	3.40	5.70
March	82	74,413,634	3.92	3.16	5.77	11	10,640,207	3.99	3.36	5.70
April	81	71,689,618	3.94	3.16	5.77	11	10,214,656	3.94	3.33	5.69
May	80	72,966,235	3.88	3.13	5.76	11	10,464,754	3.80	3.26	5.66
June	80	69,523,926	3.80	3.10	5.76	11	10,224,823	3.68	3.23	5.66
July	169	121,138,575	4.06	3.22	5.73	18	81,854,223	4.17	3.47	5.68
August	167	117,067,976	4.12	3.23	5.75	18	81,604,645	4.18	3.47	5.71
September	166	110,391,793	4.16	3.28	5.73	18	78,501,029	4.35	3.57	5.66
October	80	67,461,801	3.93	3.25	5.75	11	9,734,323	4.03	3.44	5.63
November	80	65,489,505	3.98	3.26	5.77	11	9,872,304	4.06	3.45	5.70
December	80	68,377,227	4.04	3.25	5.78	11	10,190,198	4.03	3.43	5.69
Average/Total	102	976,996,255	4.00	3.21	5.76	13	332,754,137	4.16	3.47	5.68

1/ Includes: Latah Counties, Idaho; and Benton and Kittitas Counties, Washington.

2/ Includes: Bear Lake and Franklin Counties, Idaho; and Cache County, Utah.

Table T-3a
Butterfat Tests by Region: 2017

Month	Pacific Northwest Order Butterfat			
	Western WA 1/	Eastern WA 2/	Western OR	Eastern OR
January	4.14	4.16	4.01	4.11
February	4.09	4.10	3.95	4.06
March	4.05	4.01	3.92	3.99
April	4.01	3.92	3.94	3.94
May	3.97	3.83	3.88	3.80
June	3.94	3.77	3.80	3.68
July	3.95	3.76	4.06	4.17
August	3.96	3.80	4.12	4.18
September	4.01	3.89	4.16	4.35
October	4.10	4.05	3.93	4.03
November	4.17	4.12	3.98	4.06
December	4.16	4.12	4.04	4.03
Average	4.04	3.96	4.00	4.16

1/ Includes: Latah Counties, Idaho; and Benton and Kittitas Counties, Washington.

2/ Includes: Bear Lake and Franklin Counties, Idaho; and Cache County, Utah.

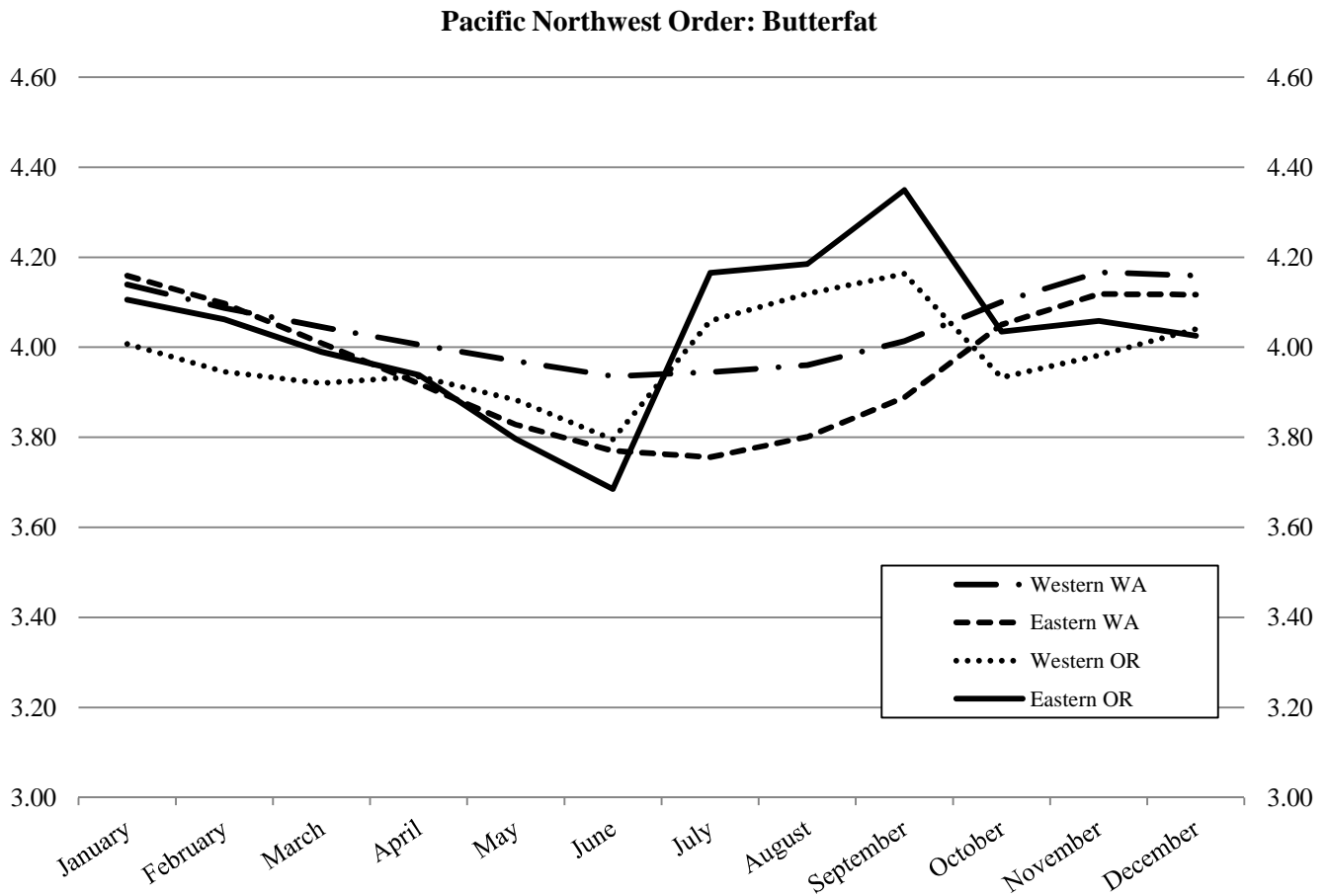


Table T-3b
Protein Tests by Region: 2017

Pacific Northwest Order

Month	Protein			
	Western WA 1/	Eastern WA 2/	Western OR	Eastern OR
January	3.30	3.35	3.24	3.47
February	3.26	3.29	3.17	3.40
March	3.24	3.25	3.16	3.36
April	3.21	3.22	3.16	3.33
May	3.18	3.17	3.13	3.26
June	3.16	3.13	3.10	3.23
July	3.16	3.08	3.22	3.47
August	3.18	3.10	3.23	3.47
September	3.23	3.20	3.28	3.57
October	3.32	3.35	3.25	3.44
November	3.34	3.38	3.26	3.45
December	3.31	3.34	3.25	3.43
Average	3.24	3.24	3.21	3.47

1/ Includes: Latah Counties, Idaho; and Benton and Kittitas Counties, Washington.

2/ Includes: Bear Lake and Franklin Counties, Idaho; and Cache County, Utah.

Pacific Northwest Order: Protein

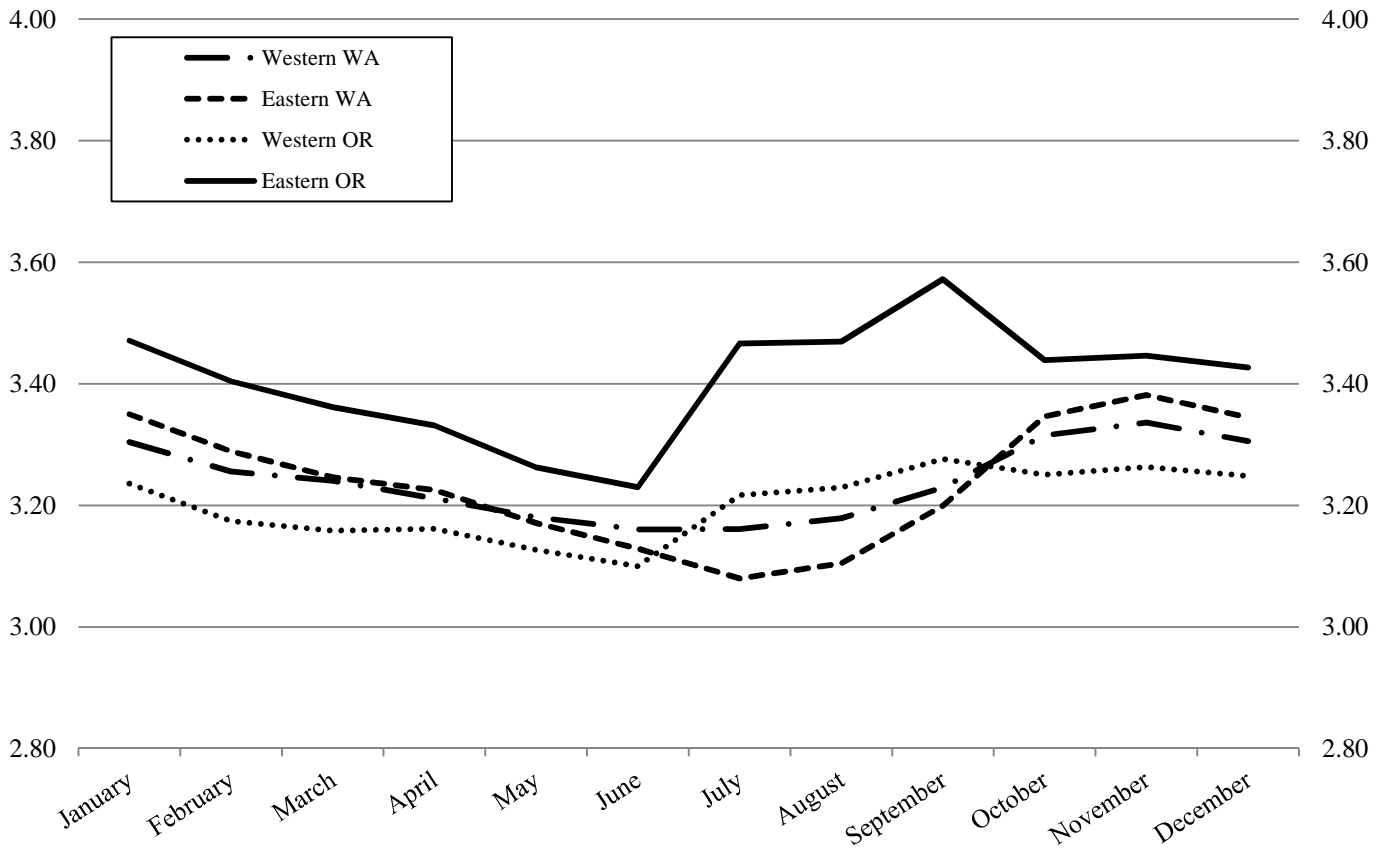


Table T-3c
Other Solids Tests by Region: 2017

Month	Pacific Northwest Order			
	Western WA 1/	Eastern WA 2/	Western OR	Eastern OR
January	5.72	5.74	5.76	5.68
February	5.74	5.75	5.77	5.70
March	5.73	5.75	5.77	5.70
April	5.73	5.76	5.77	5.69
May	5.72	5.76	5.76	5.66
June	5.72	5.77	5.76	5.66
July	5.71	5.76	5.73	5.68
August	5.70	5.75	5.75	5.71
September	5.70	5.75	5.73	5.66
October	5.71	5.74	5.75	5.63
November	5.73	5.76	5.77	5.70
December	5.75	5.77	5.78	5.69
Average	5.72	5.76	5.76	5.68

1/ Includes: Latah Counties, Idaho; and Benton and Kittitas Counties, Washington.

2/ Includes: Bear Lake and Franklin Counties, Idaho; and Cache County, Utah.

Pacific Northwest Order: Other Solids

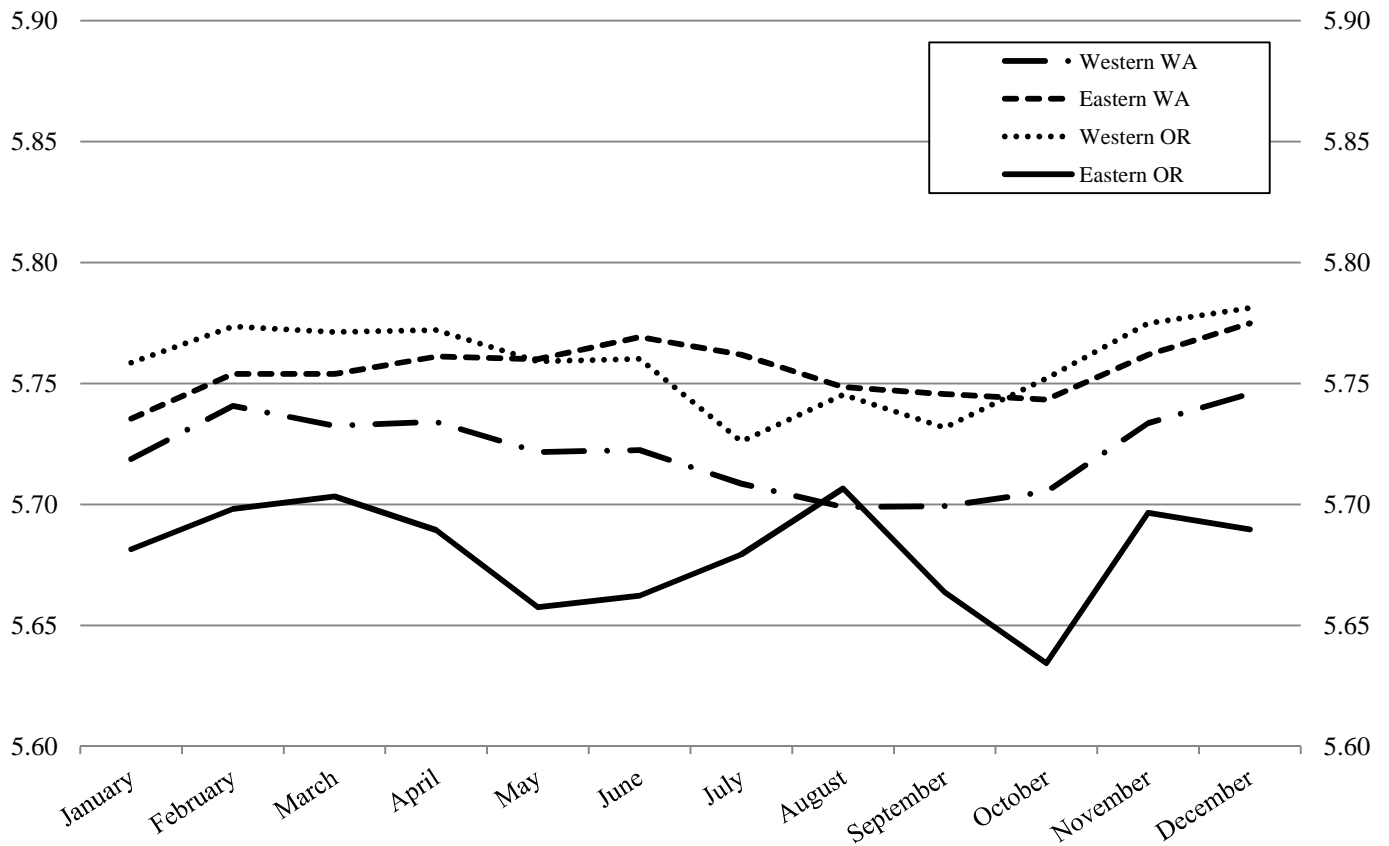
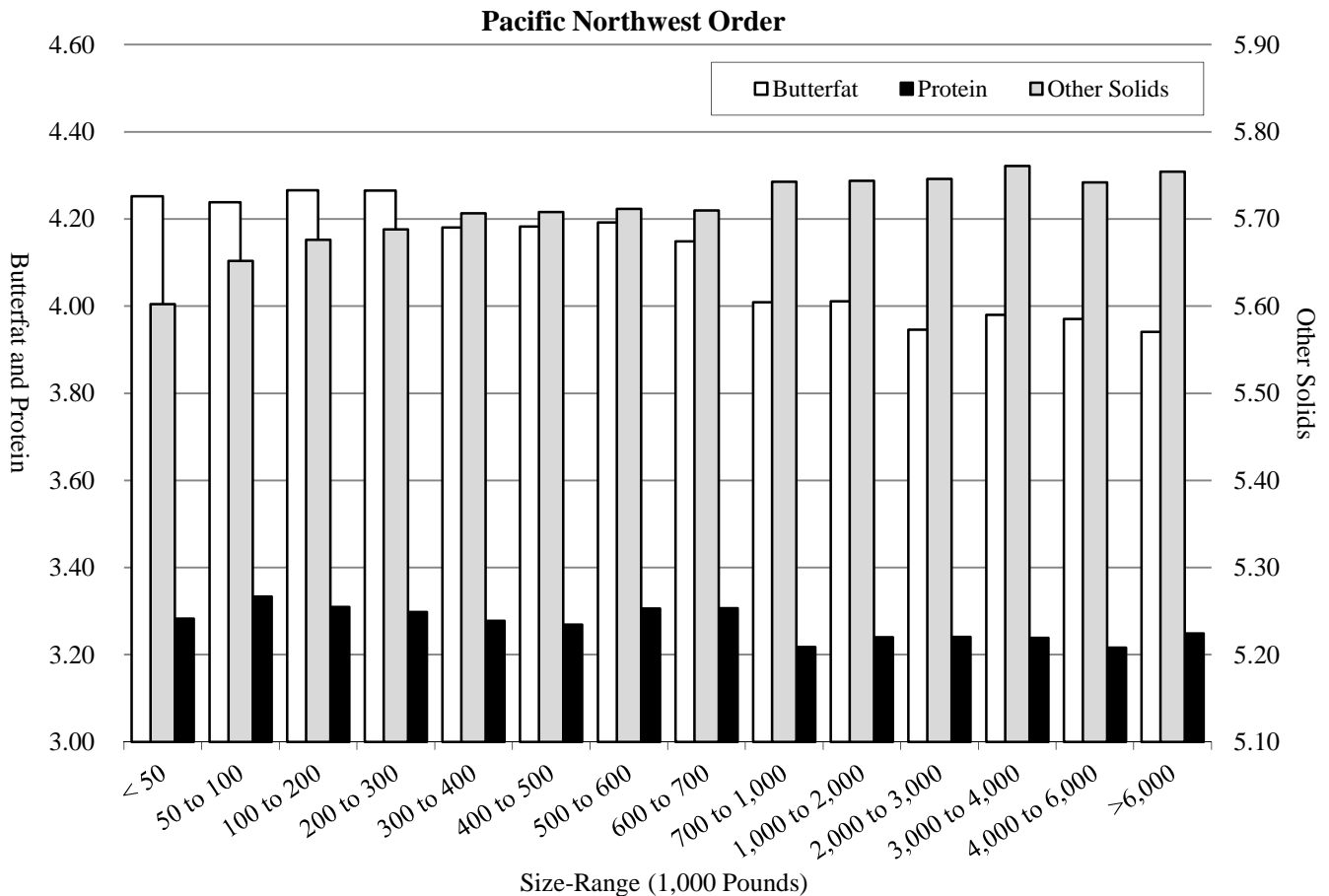


Table T-4
Component Tests by Size-Range of Producer Milk Deliveries: 2017

Size-Range (Pounds)		No. of Observations	Butterfat	Protein	Other Solids
Equal to or more than	Less than				
0	50,000	172	4.25	3.28	5.60
50,000	100,000	324	4.24	3.33	5.65
100,000	200,000	825	4.27	3.31	5.68
200,000	300,000	586	4.26	3.30	5.69
300,000	400,000	360	4.18	3.28	5.71
400,000	500,000	323	4.18	3.27	5.71
500,000	600,000	174	4.19	3.31	5.71
600,000	700,000	241	4.15	3.31	5.71
700,000	1,000,000	501	4.01	3.22	5.74
1,000,000	2,000,000	980	4.01	3.24	5.74
2,000,000	3,000,000	486	3.95	3.24	5.75
3,000,000	4,000,000	182	3.98	3.24	5.76
4,000,000	6,000,000	240	3.97	3.22	5.74
6,000,000		217	3.94	3.25	5.75
Total/Average		5,611	3.99	3.24	5.74

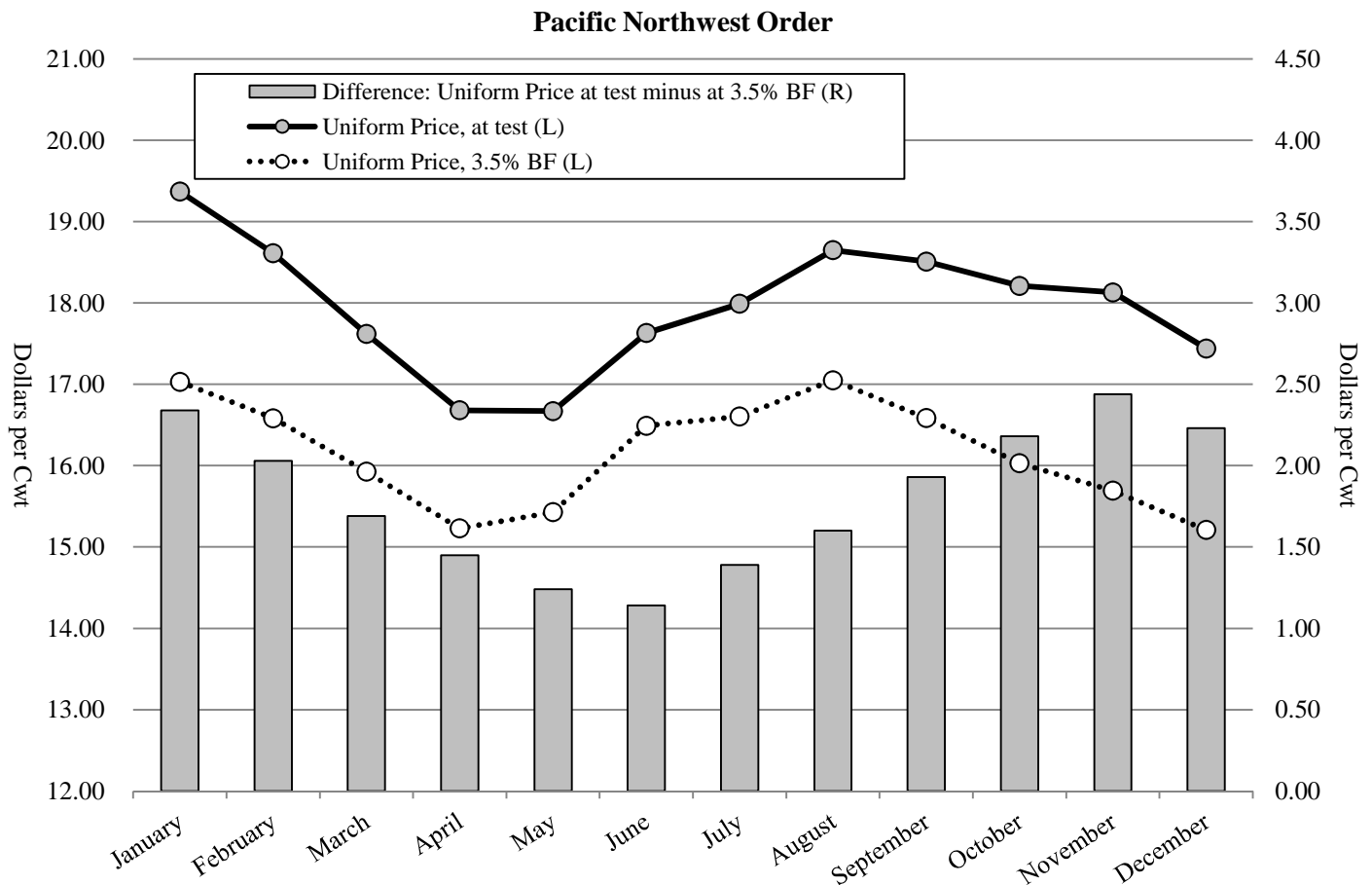


**Table T-5
 Producer Prices and Component Tests by Month: 2017**

Pacific Northwest Order

Month	A		B		Butterfat		Protein		Other Solids		Producer Price Differential 1/
	Uniform Price, 3.5% BF	Uniform Price, at test	Difference (B - A)								
	- - - - \$ / Cwt - - - -			- \$ / Lb -	- % -	- \$ / Lb -	- % -	- \$ / Lb -	- % -	- \$ / Cwt -	
January	17.03	19.37	2.34	2.5253	4.13	2.1768	3.32	0.2503	5.73	0.26	
February	16.58	18.61	2.03	2.4274	4.08	2.2348	3.27	0.2990	5.75	(0.30)	
March	15.93	17.62	1.69	2.4176	4.01	1.8198	3.24	0.3345	5.75	0.12	
April	15.23	16.68	1.45	2.3548	3.95	1.6955	3.22	0.3350	5.75	0.01	
May	15.43	16.67	1.24	2.4134	3.88	1.7723	3.17	0.3196	5.75	(0.14)	
June	16.49	17.63	1.14	2.7066	3.82	1.7545	3.14	0.3014	5.75	0.05	
July	16.60	17.99	1.39	2.9456	3.90	1.2248	3.16	0.2599	5.73	1.15	
August	17.05	18.65	1.60	3.0109	3.93	1.5536	3.18	0.2425	5.73	0.48	
September	16.59	18.51	1.93	2.8559	4.01	1.6988	3.26	0.2241	5.72	0.23	
October	16.03	18.21	2.18	2.6646	4.05	2.1084	3.33	0.1853	5.73	(0.66)	
November	15.69	18.13	2.44	2.5546	4.12	2.3412	3.36	0.1644	5.75	(1.19)	
December	15.21	17.44	2.23	2.4951	4.12	2.0378	3.32	0.1070	5.77	(0.23)	
Average	16.18	17.97	1.79	2.6305	3.99	1.8479	3.24	0.2518	5.74	0.02	

1/ The producer price differentials for the Pacific Northwest Order are subject to applicable location adjustments.



**Table T-6
 Producer Milk and Value by Size-Range of Producer Milk Deliveries: 2017**

Pacific Northwest Order

Size-Range		Producer Milk	Percent of Producer Milk	No. of Observations	Percent of Observations	Producer Milk Value at Test 1/	Value at Test
Equal to or more than	Less than						
- - Pounds - -		- Pounds -	- % -		- % -	- Dollars -	- \$ / Cwt -
0	50,000	5,877,436	0.1%	172	3.1%	1,099,780.93	18.71
50,000	100,000	24,573,771	0.3%	324	5.8%	4,601,336.86	18.72
100,000	200,000	119,091,443	1.6%	825	14.7%	22,355,342.97	18.77
200,000	300,000	144,453,805	1.9%	586	10.4%	27,137,738.26	18.79
300,000	400,000	124,133,285	1.6%	360	6.4%	22,975,297.23	18.51
400,000	500,000	145,376,192	1.9%	323	5.8%	26,976,727.37	18.56
500,000	600,000	94,643,560	1.2%	174	3.1%	17,612,332.70	18.61
600,000	700,000	157,572,657	2.1%	241	4.3%	29,207,991.28	18.54
700,000	1,000,000	413,528,296	5.4%	501	8.9%	74,319,496.69	17.97
1,000,000	2,000,000	1,433,213,672	18.7%	980	17.5%	257,923,592.03	18.00
2,000,000	3,000,000	1,166,128,987	15.2%	486	8.7%	207,694,037.83	17.81
3,000,000	4,000,000	631,563,366	8.2%	182	3.2%	113,262,083.92	17.93
4,000,000	6,000,000	1,188,205,189	15.5%	240	4.3%	211,923,439.95	17.84
6,000,000		2,012,618,954	26.3%	217	3.9%	359,549,612.39	17.86
Total/Average		7,660,980,613	100.0%	5,611	100.0%	1,376,638,810.41	17.97

1/ Based on Federal order producer minimum prices. Producer prices are subject to location adjustments.

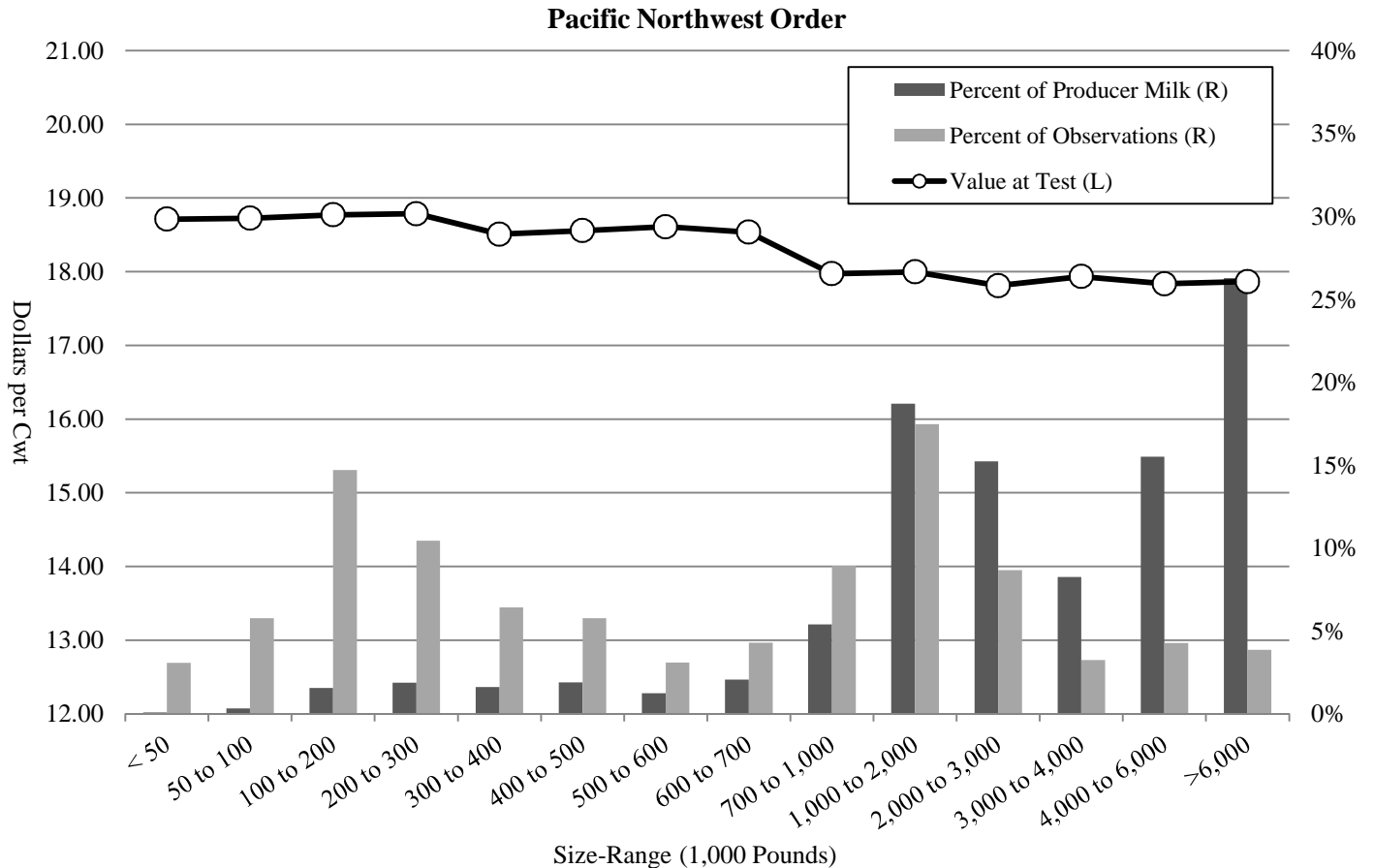


Table T-7a
Long Term Trends in Component Tests, Butterfat: 2008-2017

Pacific Northwest Order

Year	Average No. of Producers	Test	Standard Deviation	Minimum	Maximum
2008	610	3.67	0.39	2.60	5.65
2009	624	3.71	0.41	2.62	5.83
2010	632	3.73	0.43	2.74	6.10
2011	610	3.77	0.43	2.70	6.21
2012	532	3.81	0.42	2.78	6.20
2013	568	3.88	0.44	2.84	6.07
2014	534	3.88	0.45	2.72	6.22
2015	479	3.92	0.46	2.47	6.67
2016	492	3.95	0.45	2.80	6.30
2017	468	3.99	0.45	2.64	5.87
10 Year Simple Average	555	3.83	0.43	2.69	6.11

Pacific Northwest Order: Butterfat

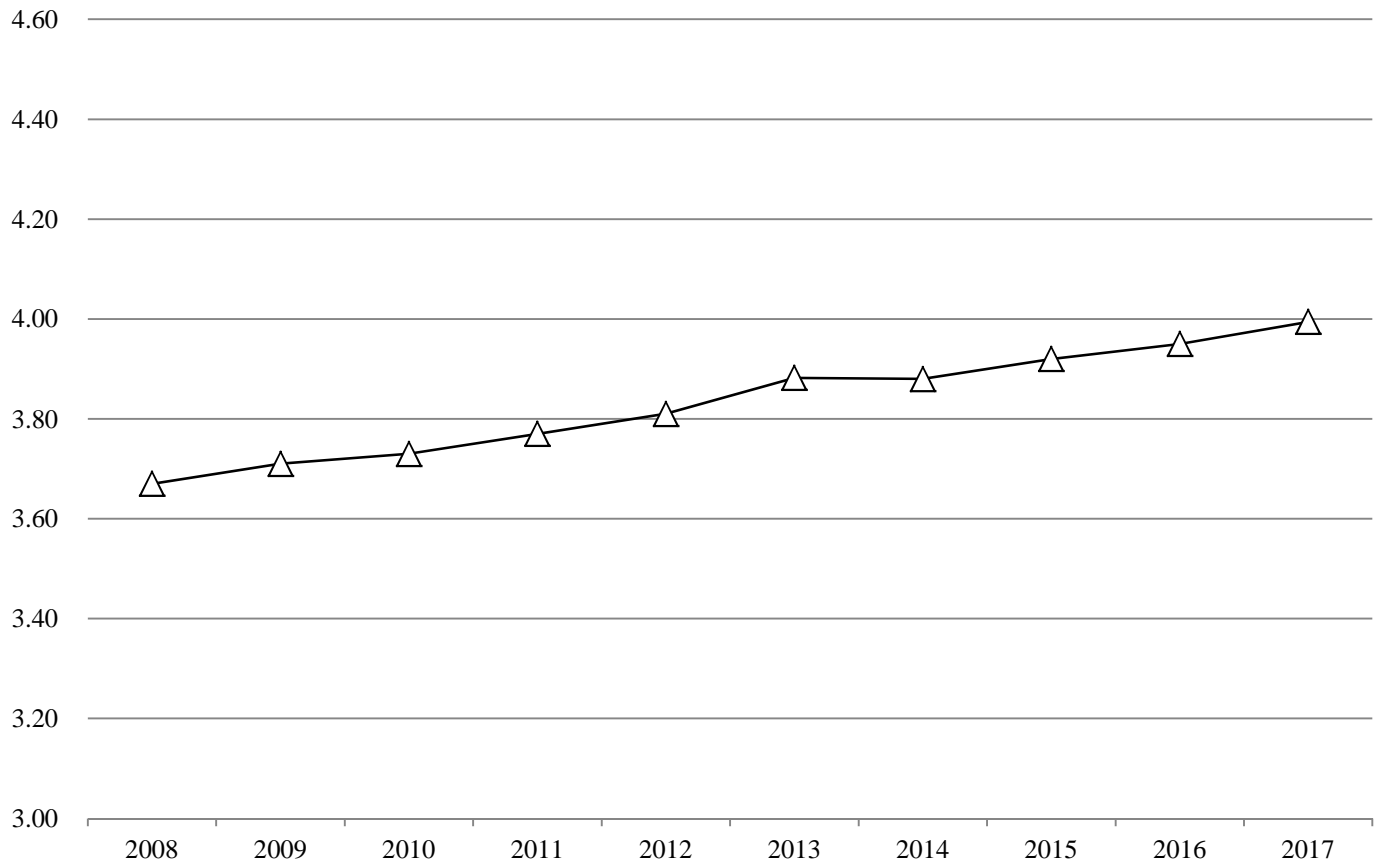


Table T-7b
Long Term Trends in Component Tests, Protein: 2008-2017

Pacific Northwest Order

Year	Average No. of Producers	Test	Standard Deviation	Minimum	Maximum
2008	610	3.09	0.21	2.58	4.28
2009	624	3.11	0.22	2.63	4.09
2010	632	3.15	0.22	2.13	4.40
2011	610	3.17	0.22	2.58	4.43
2012	532	3.17	0.22	2.47	4.31
2013	568	3.22	0.22	2.58	4.30
2014	534	3.20	0.22	2.60	4.56
2015	479	3.20	0.23	2.58	4.34
2016	492	3.22	0.23	2.45	4.42
2017	468	3.24	0.23	2.62	4.33
10 Year Simple Average	555	3.18	0.22	2.52	4.35

Pacific Northwest Order: Protein

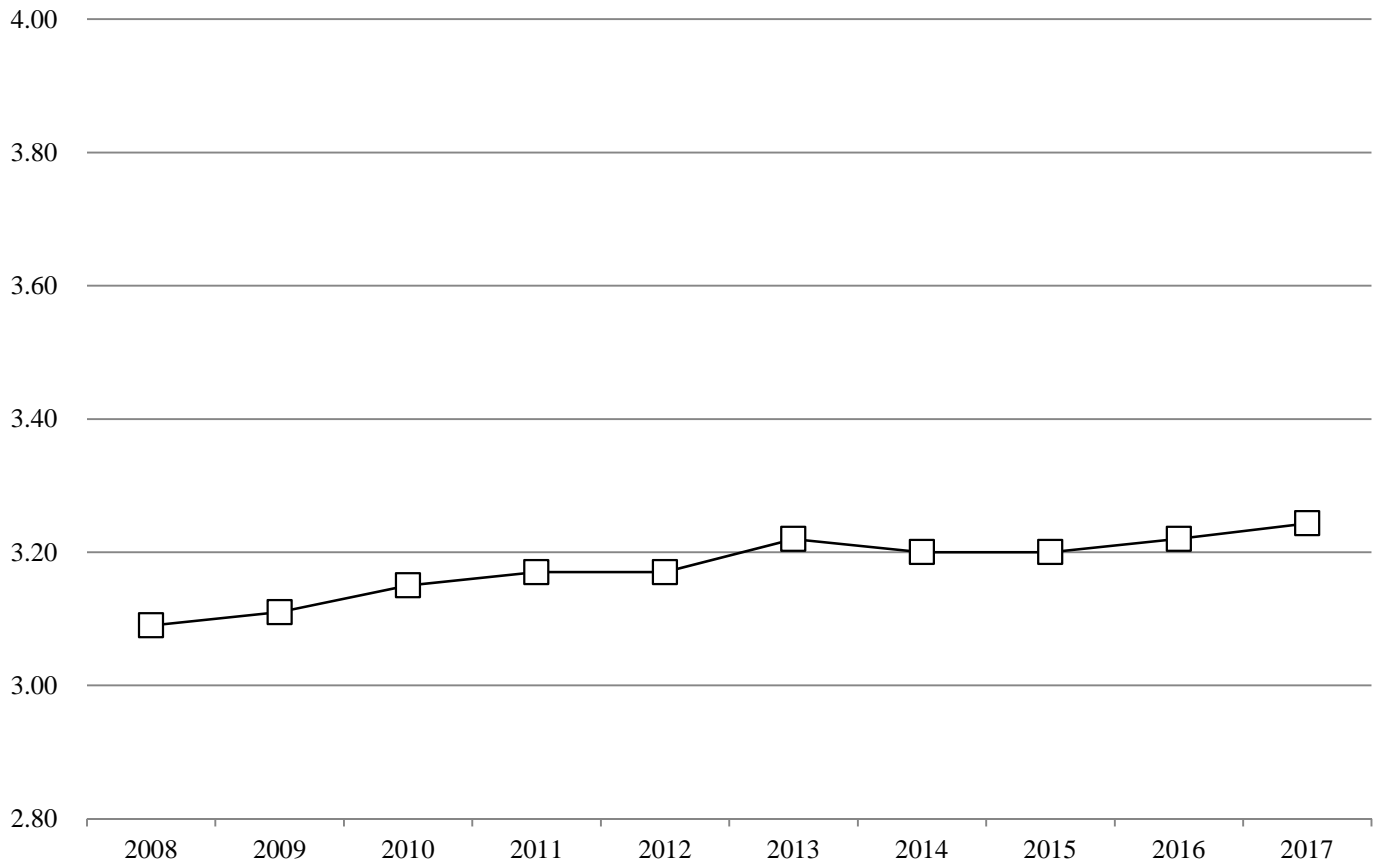


Table T-7c
Long Term Trends in Component Tests, Other Solids: 2008-2017

Pacific Northwest Order

Year	Average No. of Producers	Test	Standard Deviation	Minimum	Maximum
2008	610	5.70	0.09	4.86	5.99
2009	624	5.69	0.09	4.96	5.87
2010	632	5.71	0.09	4.71	5.92
2011	610	5.73	0.09	4.86	6.01
2012	532	5.74	0.09	4.62	5.95
2013	568	5.73	0.08	4.67	5.97
2014	534	5.72	0.08	4.78	5.91
2015	479	5.73	0.09	5.20	5.97
2016	492	5.73	0.09	5.12	5.93
2017	468	5.74	0.09	5.24	5.95
10 Year Simple Average	555	5.72	0.09	4.90	5.95

Pacific Northwest Order: Other Solids

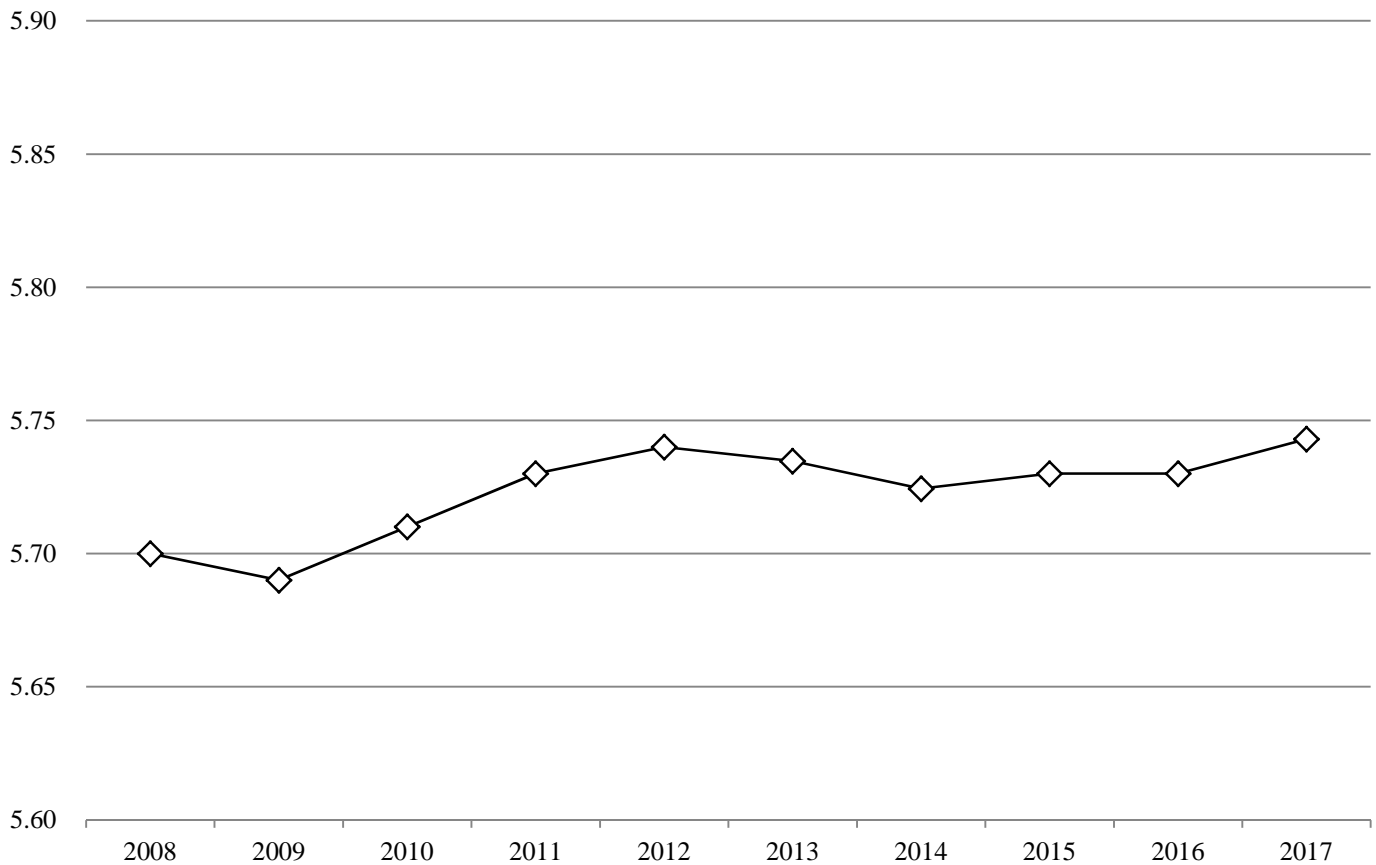


Table T-8

Number of Producers, Producer Milk, Component Tests and Standard Deviations: 2017

Arizona Order

Month	No. of Producers	Producer Milk	Butterfat	
			Test	Standard Deviation
January	90	460,324,212	3.72	0.34
February	89	392,205,113	3.65	0.32
March	88	458,012,389	3.57	0.31
April	88	441,319,701	3.55	0.29
May	89	447,345,641	3.54	0.28
June	89	432,973,951	3.56	0.27
July	90	426,566,247	3.58	0.26
August	91	413,792,429	3.59	0.26
September	91	397,360,320	3.63	0.28
October	91	386,533,583	3.69	0.30
November	88	385,179,292	3.72	0.29
December	88	422,838,692	3.72	0.31
Average/Total	89	5,064,451,570	3.63	0.30

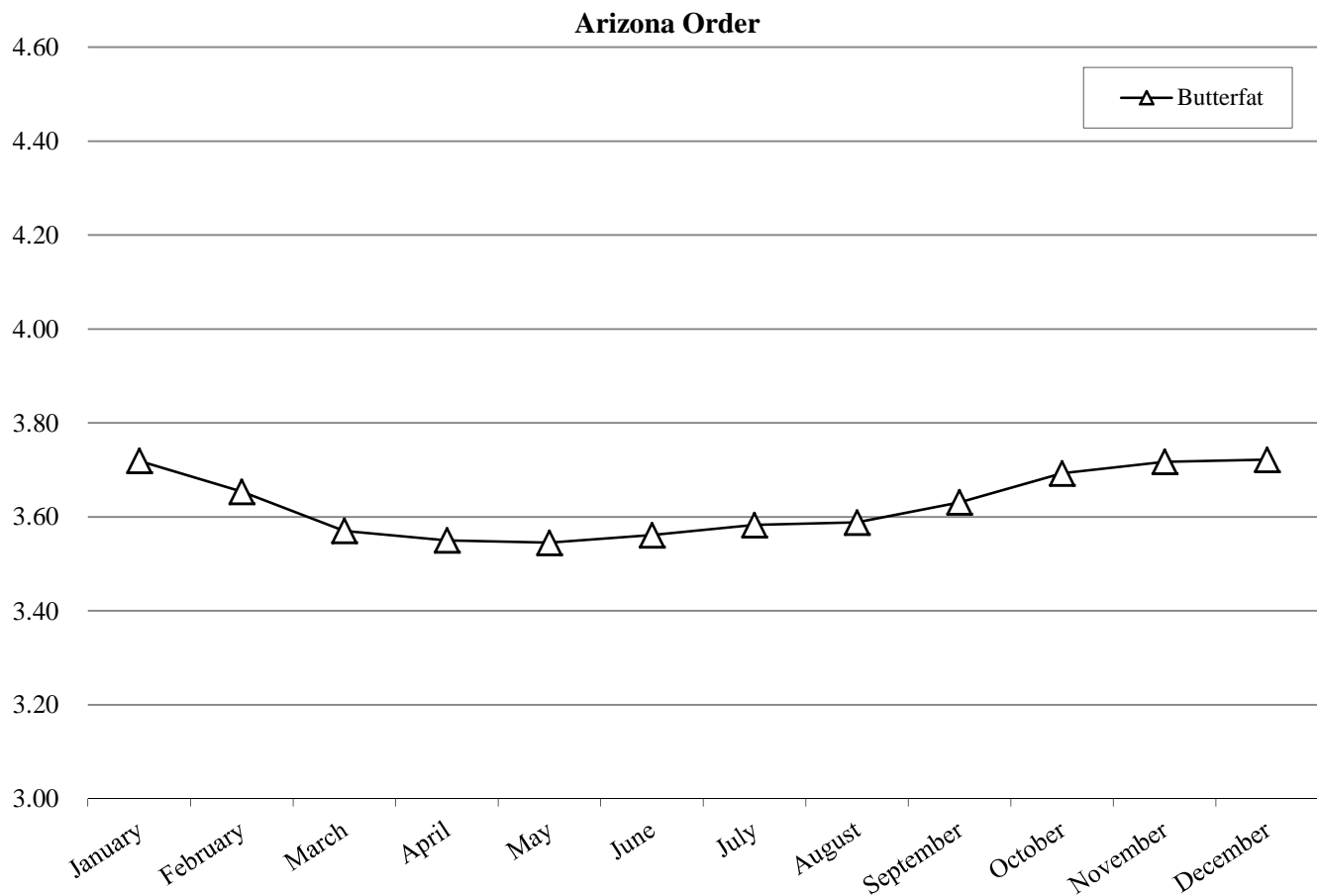


Table T-9
Component Tests by Size-Range of Producer Milk Deliveries: 2017

Size-Range (Pounds)		No. of Observations	Butterfat
Equal to or more than	Less than		
0	200,000	41	3.82
200,000	300,000	20	3.75
300,000	400,000	10	3.79
400,000	500,000	8	3.84
500,000	600,000	10	3.75
600,000	700,000	11	3.60
700,000	1,000,000	43	3.66
1,000,000	2,000,000	174	3.70
2,000,000	3,000,000	115	3.69
3,000,000	4,000,000	138	3.74
4,000,000	5,000,000	106	3.60
5,000,000	6,000,000	119	3.59
6,000,000	7,000,000	105	3.69
7,000,000		172	3.57
Total/Average		1,072	3.63

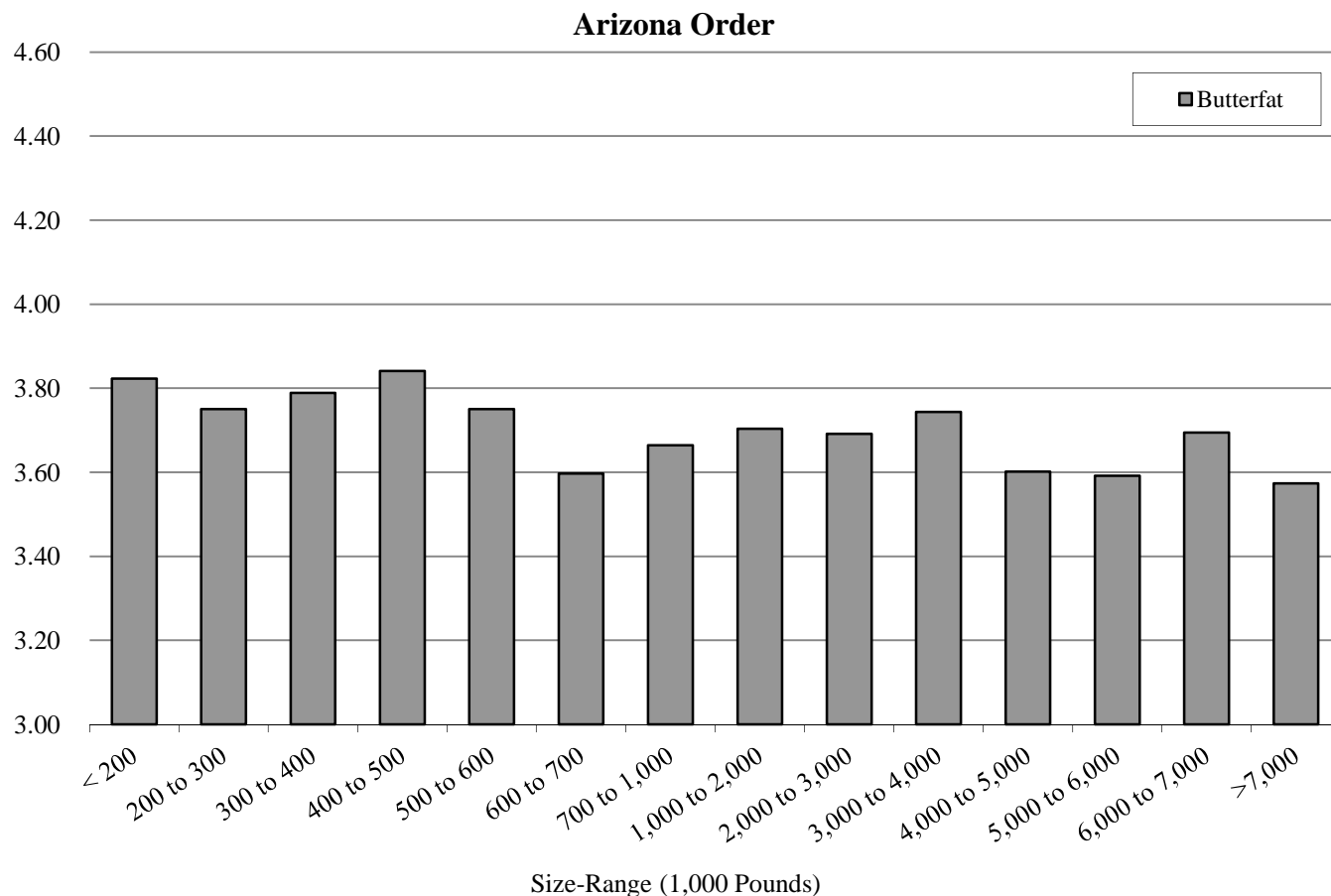


Table T-10
Producer Prices and Component Tests by Month: 2017

Arizona Order

Month	A		B		Butterfat 1/		Skim 1/	
	Uniform Price, 3.5% BF	Uniform Price, at test	Difference (B - A)	- \$ / Lb -	- % -	- \$ / Cwt -	- % -	
January	17.36	17.88	0.52	2.5048	3.72	8.90	96.28	
February	16.73	17.10	0.37	2.4458	3.65	8.47	96.35	
March	16.02	16.18	0.16	2.4263	3.57	7.80	96.43	
April	15.35	15.46	0.11	2.3723	3.55	7.30	96.45	
May	15.53	15.63	0.10	2.4129	3.54	7.34	96.46	
June	16.59	16.75	0.16	2.6615	3.56	7.54	96.44	
July	17.02	17.26	0.24	2.9203	3.58	7.05	96.42	
August	17.40	17.66	0.26	3.0105	3.59	7.11	96.41	
September	16.89	17.26	0.37	2.8878	3.63	7.03	96.37	
October	16.43	16.94	0.51	2.7040	3.69	7.22	96.31	
November	16.02	16.56	0.54	2.5829	3.72	7.23	96.28	
December	15.44	15.98	0.54	2.5062	3.72	6.91	96.28	
Average	16.39	16.71	0.32	2.6144	3.63	7.50	96.37	

1/ The producer prices for the Arizona Order are subject to applicable location adjustments.

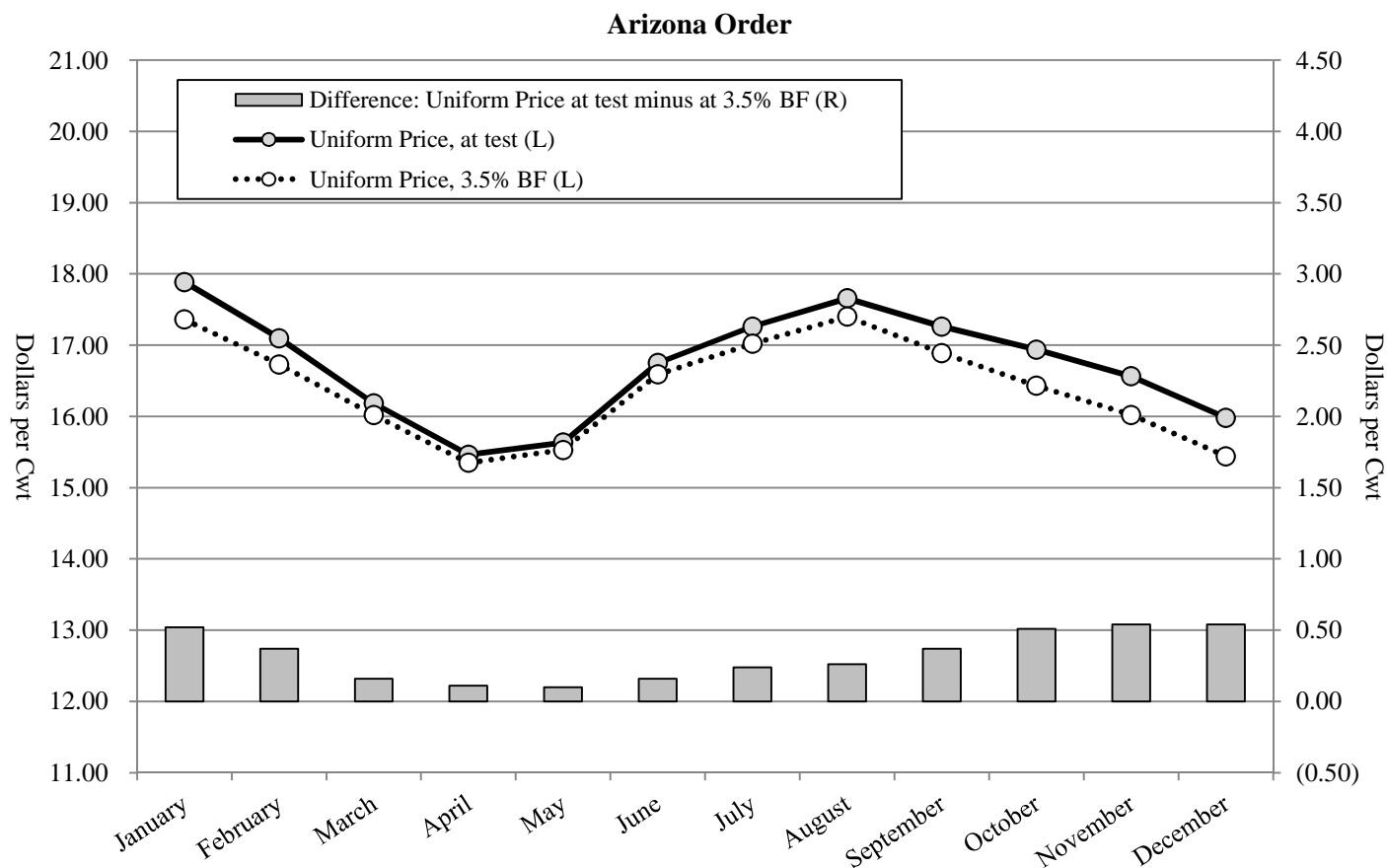


Table T-11
Producer Milk and Value by Size-Range of Producer Milk Deliveries: 2017

Arizona Order

Size-Range		Producer Milk	Percent of Producer Milk	No. of Observations	Percent of Observations	Producer Milk Value at Test 1/	Value at Test
Equal to or more than	Less than						
- - - Pounds - - -		- Pounds -	- % -		- % -	- Dollars -	- \$ / Cwt -
0	200,000	4,164,836	0.08%	41	3.82%	703,812.87	16.90
200,000	300,000	4,997,485	0.10%	20	1.87%	835,232.02	16.71
300,000	400,000	3,394,440	0.07%	10	0.93%	564,600.63	16.63
400,000	500,000	3,671,288	0.07%	8	0.75%	637,311.23	17.36
500,000	600,000	5,592,200	0.11%	10	0.93%	951,427.56	17.01
600,000	700,000	7,217,601	0.14%	11	1.03%	1,198,027.37	16.60
700,000	1,000,000	37,032,716	0.73%	43	4.01%	6,250,768.77	16.88
1,000,000	2,000,000	269,368,253	5.32%	174	16.23%	45,904,744.24	17.04
2,000,000	3,000,000	278,778,736	5.50%	115	10.73%	47,194,259.66	16.93
3,000,000	4,000,000	482,667,623	9.53%	138	12.87%	82,536,765.72	17.10
4,000,000	5,000,000	485,498,988	9.59%	106	9.89%	81,334,297.48	16.75
5,000,000	6,000,000	654,731,010	12.93%	119	11.10%	108,398,636.52	16.56
6,000,000	7,000,000	673,738,112	13.30%	105	9.79%	113,534,423.62	16.85
7,000,000		2,153,598,282	42.52%	172	16.04%	356,269,604.47	16.54
Total/Average		5,064,451,570	100.00%	1,072	100.00%	846,313,912.16	16.71

1/ Based on Federal order minimum producer prices. Producer prices are subject to location adjustments.

Arizona Order

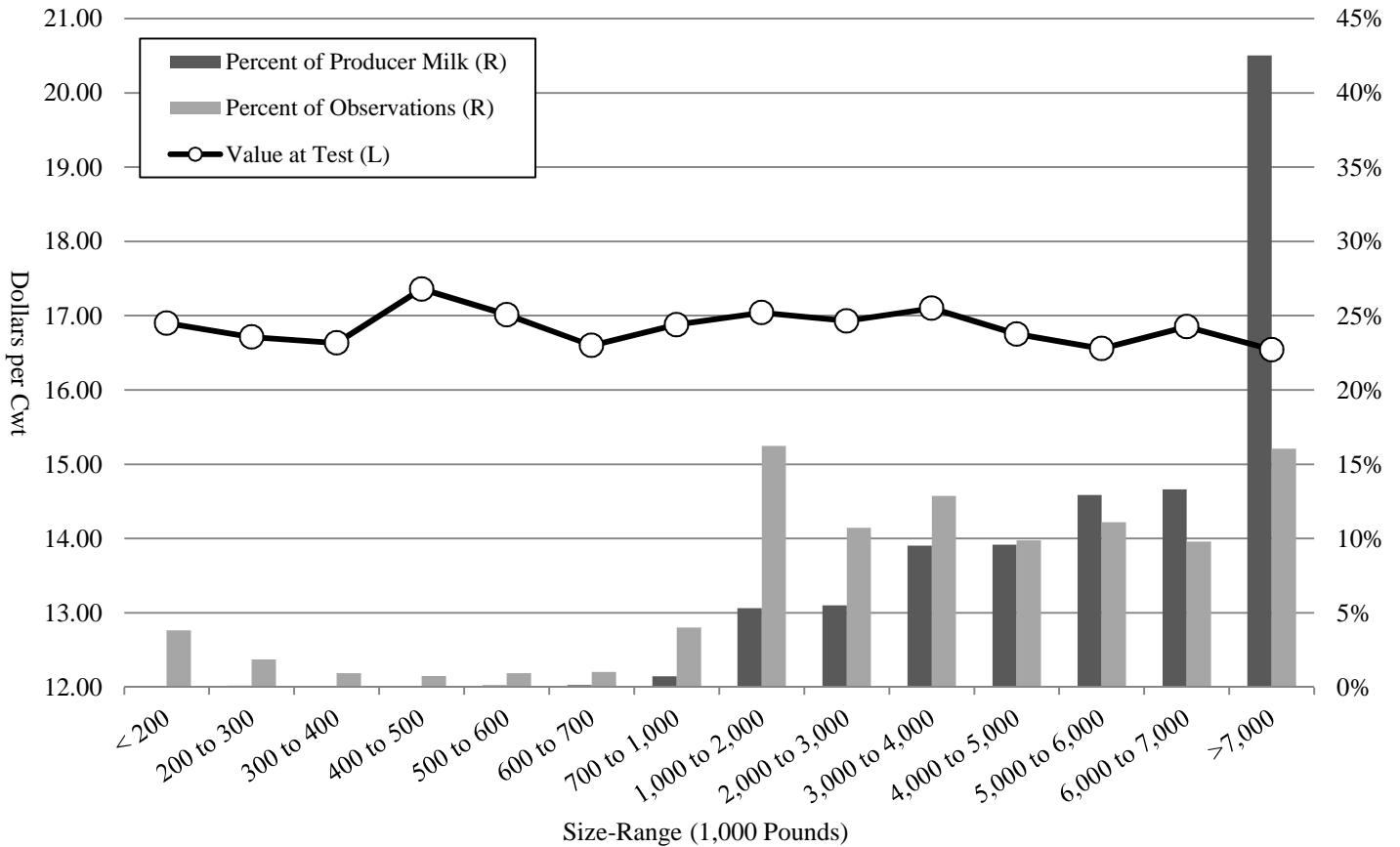


Table T-12
Long Term Trends in Component Tests, Butterfat: 2008-2017

Arizona Order

Year	Average No. of Producers	Test	Standard Deviation	Minimum	Maximum
2008	99	3.56	0.33	2.87	5.07
2009	97	3.49	0.33	2.59	5.60
2010	96	3.50	0.36	2.36	5.45
2011	100	3.55	0.33	2.48	4.99
2012	95	3.55	0.33	2.98	5.46
2013	92	3.52	0.32	2.90	5.09
2014	92	3.47	0.31	2.91	4.94
2015	95	3.47	0.31	2.46	5.02
2016	91	3.54	0.31	2.87	5.10
2017	89	3.63	0.30	2.92	5.08
10 Year Simple Average	95	3.53	0.32	2.73	5.18

Arizona Order: Butterfat

