



Pacific Northwest and Arizona Marketing Areas

Lisa K. Wyatt, Market Administrator

Volume 47, No. 4

April 2021

Data for March 2021

MARKET SUMMARIES FOR MARCH

Pacific Northwest (FO 124)

Producers delivered a total of 627.3 million pounds of milk to the market during March. Daily deliveries averaged 20.2 million pounds, up 0.7 percent from February. An estimated 351 producers delivered milk to the market during the month. Daily deliveries per producer averaged 57,654 pounds, up 0.7 percent from February.

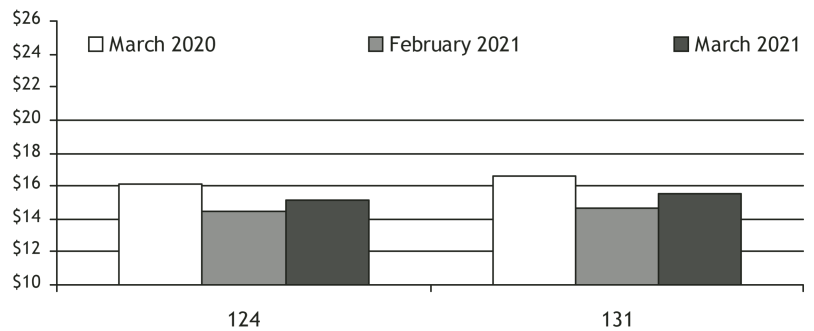
Class I producer milk during March totaled 139.2 million pounds, 22.2 percent of total producer receipts. Daily usage averaged 4.5 million pounds, down 2.9 percent from February. ▼

Arizona (FO 131)

Producers delivered a total of 357.1 million pounds of milk to the market during March. Daily deliveries averaged 11.5 million pounds, up 1.2 percent from February. An estimated 64 producers delivered milk to the market during the month. Daily deliveries per producer averaged 179,978 pounds, up 1.2 percent from February.

Class I producer milk during March totaled 113.1 million pounds, 31.7 percent of total producer receipts. Daily usage averaged 3.6 million pounds, up 7.7 percent from February. ▼

UNIFORM PRICE



Pool Quick Stats

Producer Prices & Component Levels	FO 124		FO 131	
	Feb	Mar	Feb	Mar
Uniform Price (at 3.5%)	\$14.43	\$15.15	\$14.69	\$15.55
Uniform Price (at test)	\$16.38	\$17.10	\$15.06	\$15.90
PPD	(\$1.32)	(\$1.00)		
Butterfat	\$1.4376	\$1.7176		n/a
Protein	\$2.9816	\$2.6954		
Other Solids	\$0.3161	\$0.3652		
Uniform Skim			\$9.89	\$10.06
Uniform Butterfat		n/a	\$1.4698	\$1.6682
Butterfat	4.165%	4.134%	3.774%	3.727%
Protein	3.312%	3.297%		
Other Solids	5.809%	5.779%		n/a

HIGHLIGHTS THIS ISSUE

- ✓ Overview of Component Tests of Producer Milk at the Farm Level: 2020
- ✓ USDA Provides Notice of Retroactive Reimbursements Under the Dairy Donation Program

Federal Order Price Summaries

FINAL CLASS PRICES

The March 2021 Final Class Prices were calculated using AMS commodity price surveys from March 6, 13, 20, and 27, 2021. Current and archived Final Class Price announcements are available at www.fmmaseattle.com/classcomponent.html.

FINAL	Class I (FO124)	Class I (FO131)	Class II	Class III	Class IV	Butterfat	Protein	Other Solids	Nonfat Solids
Feb 2021	\$17.44	\$17.89	\$14.00	\$15.75	\$13.19	\$1.4376	\$2.9816	\$0.3161	\$0.9391
Mar 2021	\$17.10	\$17.55	\$15.07	\$16.15	\$14.18	\$1.7176	\$2.6954	\$0.3652	\$0.9396
Change	(\$0.34)	(\$0.34)	\$1.07	\$0.40	\$0.99	\$0.2800	(\$0.2862)	\$0.0491	\$0.0005

ADVANCED CLASS I PRICE

The May 2021 Advanced Price was calculated using AMS commodity price surveys from April 10 and 17, 2021. Current and archived Advanced Price announcements are available at www.fmmaseattle.com/advance.html.

ADVANCED	Base Butterfat	Class III Skim	Class IV Skim	Base Skim	Base Class I	Class I (FO124)	Class I (FO131)	Class II Skim	Class II Non-fat Solids
Apr 2021	\$1.6735	\$10.19	\$8.33	\$10.00	\$15.51	\$17.41	\$17.86	\$9.03	\$1.0033
May 2021	\$1.9755	\$10.75	\$8.88	\$10.56	\$17.10	\$19.00	\$19.45	\$9.58	\$1.0644
Change	\$0.3020	\$0.56	\$0.55	\$0.56	\$1.59	\$1.59	\$1.59	\$0.55	\$0.0611

Commodity Price Summaries

AMS COMMODITY PRICES FOR FINAL CLASS PRICES CALCULATION

	Feb	Mar	Change
Cheese	\$1.5954	\$1.5981	\$0.0027
Butter	\$1.3586	\$1.5898	\$0.2312
Nonfat Dry Milk	\$1.1164	\$1.1169	\$0.0005
Whey	\$0.5060	\$0.5537	\$0.0477

AMS COMMODITY PRICES FOR ADVANCED CLASS PRICES CALCULATION

	Apr	May	Change
Cheese	\$1.5599	\$1.6728	\$0.1129
Butter	\$1.5534	\$1.8028	\$0.2494
Nonfat Dry Milk	\$1.1024	\$1.1645	\$0.0621
Whey	\$0.5394	\$0.6082	\$0.0688

CURRENT COMMODITY PRICES

The AMS survey of cheddar cheese prices showed a net increase in prices received for 40-pound blocks and a net increase for 500-pound barrels. The survey of 40-pound blocks showed a net increase of 14.85 cents between the March 13 and the April 17 surveys, to \$1.7793 per pound. The survey of 500-pound barrels (adjusted to 38% moisture) showed a net increase of 8.62 cents to \$1.5579 per pound.

The AMS butter price showed a net increase of 23.05 cents between the weeks ending March 13 and April 17 from \$1.6069 per pound to \$1.8374 per pound. The AMS nonfat dry milk showed an increase of 6.24 cents since mid-March to \$1.1645 per pound. The average price for AMS whey showed an increase of 6.28 cents since mid-March to \$0.6093 per pound. 🐄

Monthly Selected Statistics

PRICE & POOL DATA	PACIFIC NORTHWEST				ARIZONA			
	Mar 2021	Feb 2021	Mar 2020	Feb 2020	Mar 2021	Feb 2021	Mar 2020	Feb 2020
Producer Prices								
Producer Price Differential (\$/cwt)	(\$1.00)	(\$1.32)	(\$0.14)	(\$0.18)	+	+	+	+
Butterfat (\$/pound)	1.7176	1.4376	1.9177	1.9813	+	+	+	+
Protein (\$/pound)	2.6954	2.9816	2.8424	3.0309	+	+	+	+
Other Solids (\$/pound)	0.3652	0.3161	0.1810	0.1750	+	+	+	+
Uniform Skim Price (\$/cwt)	+	+	+	+	\$10.06	\$9.89	\$10.14	\$10.60
Uniform Butterfat Price (\$/pound)	+	+	+	+	1.6682	1.4698	1.9363	2.0049
Statistical Uniform Price (\$/cwt)	\$15.15	\$14.43	\$16.11	\$16.82	\$15.55	\$14.69	\$16.56	\$17.25
Producer Data								
Number of Producers	351	351	379	466	64	64	74	74
Avg. Daily Production (pounds)	57,654	57,260	54,325	48,053	179,978	177,845	201,612	199,919
Producer Milk Ratios								
Class I	22.19%	23.01%	24.27%	20.15%	31.67%	29.75%	25.26%	22.69%
Class II	7.22%	6.93%	6.46%	6.25%	10.05%	9.39%	7.51%	5.49%
Class III	27.11%	27.07%	28.34%	33.41%	3.26%	3.02%	24.49%	27.57%
Class IV	43.48%	42.99%	40.93%	40.19%	55.02%	57.84%	42.74%	44.25%
Market Shrinkage								
Pounds	9,110,421	8,663,344	7,113,322	6,927,387	4,464,966	1,837,927	3,037,051	3,653,243
% of Producer Milk	1.45%	1.54%	1.11%	1.07%	1.25%	0.58%	0.66%	0.85%

+ Not Applicable. Preliminary data indicated in **bold**.

Monthly Supplemental Statistics

SUPPLEMENTAL DATA	PACIFIC NORTHWEST				ARIZONA			
	Feb 2021	Jan 2021	Feb 2020	Jan 2020	Feb 2021	Jan 2021	Feb 2020	Jan 2020
Number of Handlers								
Pool Handlers	18	18	20	21	8	8	8	8
<i>Distributing Plants</i>	11	11	11	11	6	6	6	6
<i>Supply Plants 1/</i>	4	4	5	6	1	1	1	1
<i>Cooperatives</i>	3	3	4	4	1	1	1	1
Producer-Handlers	5	5	5	5	0	0	0	0
Other Plants w/ Class I Use	31	32	31	29	28	26	29	29
Class I Route Disposition In Area								
By Pool Plants	117,407,693	126,262,836	123,852,206	135,297,928	69,739,571	74,397,227	72,640,056	78,582,002
By Producer-Handlers	5,988,395	5,666,478	5,497,729	5,929,313	0	0	0	0
By Other Plants	12,666,414	15,875,921	13,588,241	14,927,130	7,622,996	10,150,989	8,536,015	12,085,063
Total	136,062,502	147,805,235	142,938,176	156,154,371	77,362,567	84,548,216	81,176,071	90,667,065
Producer-Handler Data								
% Class I Use	53.63%	47.70%	48.80%	48.70%	0.00%	0.00%	0.00%	0.00%
% of Total In-Area Route Dispositions	4.40%	3.83%	3.85%	3.80%	0.00%	0.00%	0.00%	0.00%

Preliminary data indicated in **bold**. 1/ Includes Cooperative Pool Manufacturing Plants.

Monthly Statistical Summary

RECEIPTS & UTILIZATION	PACIFIC NORTHWEST				ARIZONA			
	Mar	Feb	Mar	Feb	Mar	Feb	Mar	Feb
	2021	2021	2020	2020	2021	2021	2020	2020
Receipts of Milk								
Total Producer Milk	627,337,296	562,749,858	638,264,338	649,390,181	357,075,449	318,697,623	462,498,920	429,026,209
Receipts From Other Sources	7,354,251	6,551,429	8,227,915	10,718,680	3,988,893	2,932,955	5,530,874	4,333,003
Opening Inventory	36,152,020	37,189,992	35,279,965	38,092,946	22,016,137	24,787,408	26,621,564	26,191,370
Total To Be Accounted For	670,843,567	606,491,279	681,772,218	698,201,807	383,080,479	346,417,986	494,651,358	459,550,582
Utilization of Receipts								
Whole milk	42,233,783	39,112,786	48,636,351	40,320,993	27,002,635	24,598,546	32,683,066	25,915,291
Flavored milk & drinks	8,248,316	7,154,766	8,952,233	10,602,171	5,327,980	5,218,484	4,235,497	5,976,576
2% milk	48,900,353	44,846,854	54,278,507	45,201,723	29,588,390	26,818,237	33,214,461	26,327,728
1% milk	17,142,935	17,512,160	20,382,905	17,480,637	9,347,986	8,801,125	9,635,898	9,385,092
Skim milk	8,157,396	7,489,748	9,971,946	8,787,213	4,161,665	3,831,466	4,854,651	4,563,410
Buttermilk	1,659,381	1,291,379	1,409,739	1,459,469	622,493	471,713	438,056	471,959
Class I dispositions in area	126,342,164	117,407,693	143,631,681	123,852,206	76,051,149	69,739,571	85,061,629	72,640,056
Class I dispositions out of area	10,113,278	9,496,080	9,628,649	7,582,989	33,418,386	25,984,492	29,588,595	24,441,203
Other Class I usage	20,729,894	19,703,334	21,018,141	20,951,910	17,472,939	13,230,221	16,565,593	15,380,417
Utilization by Class								
Total Class I Use	157,185,336	146,607,107	174,278,471	152,387,105	126,942,474	108,954,284	131,215,817	112,461,676
Total Class II Use	50,167,012	41,445,393	45,062,499	45,203,245	37,158,868	30,808,986	35,706,504	24,240,051
Total Class III Use	170,784,916	152,321,234	180,904,931	216,961,920	11,629,411	1/	113,286,192	118,304,038
Total Class IV Use	292,706,303	266,117,545	281,526,317	283,649,537	207,349,726	206,654,716	214,442,845	204,544,817
Total Accounted For	670,843,567	606,491,279	681,772,218	698,201,807	383,080,479	346,417,986	494,651,358	459,550,582

CLASSIFICATION OF RECEIPTS	PACIFIC NORTHWEST				ARIZONA			
	Mar	Feb	Mar	Feb	Mar	Feb	Mar	Feb
	2021	2021	2020	2020	2021	2021	2020	2020
Producer milk								
Class I	139,197,875	129,470,073	154,935,504	130,845,078	113,088,091	94,827,385	116,840,646	97,328,960
Class II	45,309,112	38,979,334	41,239,608	40,608,631	35,883,356	29,935,030	34,721,830	23,536,006
Class III	170,040,435	152,321,234	180,904,931	216,961,720	11,629,411	9,616,346	113,286,192	118,290,846
Class IV	272,789,874	241,979,217	261,184,295	260,974,752	196,474,591	184,318,862	197,650,252	189,870,397
Other receipts								
Class I	17,987,461	17,137,034	19,342,967	21,542,027	13,854,383	14,126,899	14,375,171	15,132,716
Class II	4,857,900	2,466,059	3,822,891	4,594,614	1/	873,956	1/	1/
Class III	1/	0	0	1/	0	1/	0	1/
Class IV	20,660,910	24,138,328	20,342,022	22,674,985	12,150,647	12,719,508	17,777,267	15,391,657
Avg. daily producer receipts	20,236,687	20,098,209	20,589,172	22,392,765	11,518,563	11,382,058	14,919,320	14,794,007
Change From Previous Year	-1.71%	-10.25%	-15.38%	3.75%	-22.79%	-23.06%	-0.06%	0.12%
Avg. daily Class I use	5,070,495	5,235,968	5,621,886	5,254,728	4,094,919	3,891,224	4,232,768	3,877,989
Change From Previous Year	-9.81%	-0.36%	5.86%	-7.15%	-3.26%	0.34%	11.85%	-1.82%

1/ Restricted - Included with Class IV.

Market Administrator News

THE OVERVIEW OF COMPONENT TESTS OF PRODUCER MILK AT THE FARM LEVEL: 2020

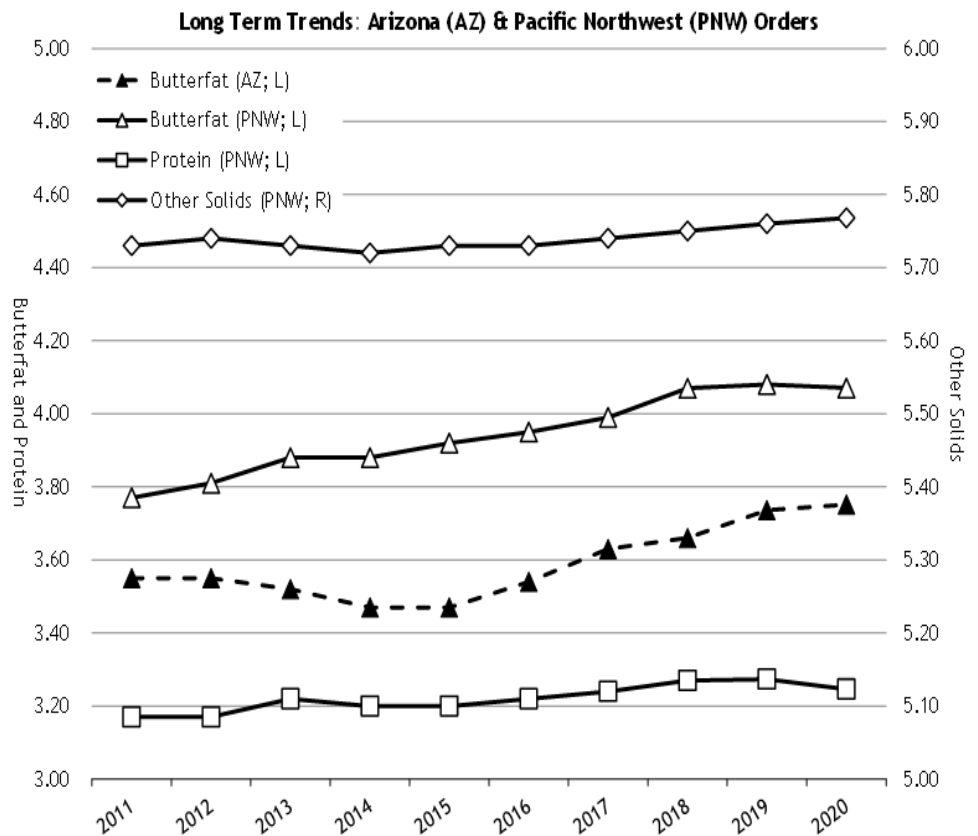
The market administrator's office recently published an overview of component tests of producer milk pooled on the Pacific Northwest and Arizona Federal Milk Marketing Orders. The tables summarize average tests by order, month, year, region, size-range of production, and long term trends. Producer milk values are also calculated using Federal order minimum producer prices for the respective orders at 3.5% butterfat and at test. All test and value averages are weighted averages.

The farm level data included in these tables comprises all producers and producer milk pooled on the Pacific Northwest and Arizona Orders. The data was collected from producer payrolls submitted by handlers to the market administrator's office. Components available for the Pacific Northwest Order are butterfat, protein, and other solids. Other solids are lactose and minerals. The component for the Arizona Order is butterfat. In certain months, milk production that historically qualified to be pooled on an order may not have been pooled due to price relationships. This historically eligible producer milk is not included in this analysis. Large changes in producer numbers and producer milk typically indicate those months when milk was not pooled due to price relationships. Small differences may be evident between published pool information and the data shown in this overview due to the use of partially audited payroll data.

For 2020, size-range categories were shifted to more appropriate levels given the current distribution of producers in the Pacific Northwest and Arizona regions.

The graph to the right provides one aspect of the data included in the overview.

The paper can be found at <http://fmmaseattle.com/staffpapers.html>. Please contact John Mykrantz at jmykrantz@fmmaseattle.com or 425-487-5612, if you have any questions.




USDA News

USDA PROVIDES NOTICE OF RETROACTIVE REIMBURSEMENTS UNDER THE DAIRY DONATION PROGRAM

On April 13, 2021, the U.S. Department of Agriculture (USDA) released a notice to trade that the USDA will soon implement the Dairy Donation Program (DDP) as established in the Consolidated Appropriations Act of 2021. The program will facilitate the timely donation of dairy products to nonprofit organizations who distribute food to persons in need and prevent and minimize food waste. Because the statute allows retroactive reimbursements of donations made before donation and distribution plans are approved, USDA is providing advance notice of the minimum provisions to be included in the program to encourage the dairy industry to process and donate surplus milk supplies as it moves through the spring surplus milk production season.

Although the DDP regulations have not yet been published, the following are the minimum key program requirements included in the statute:

- 1) A donation and distribution plan must be submitted and approved by USDA.
- 2) The reimbursement will be at least equivalent to the minimum classified value of milk used to make the donated product on the date of manufacturing.
- 3) Records related to donating and receiving products must be maintained and available for review and/or audit.
- 4) Eligibility is open to dairy farmer cooperatives and processors who “account to” a Federal milk marketing order (FMMO) and donate dairy products to any private or public nonprofit food distribution entity.

To view the notice to trade in more detail follow this link: <https://www.ams.usda.gov/content/usda-provides-notice-retroactive-reimbursements-under-dairy-donation-program-encourages> 

Federal Order Statistics for March 2021

Federal Order Name (Number)	Producer Deliveries	Class I Receipts	Class I Utilization	Class I Price	Uniform Price
	- million pounds -			- per cwt (at location) -	
Northeast (FO 1)	2,353.6	716.4	30.4%	\$18.45	\$16.50
Appalachian (FO 5)	488.7	332.8	68.1%	\$18.60	\$17.94
Florida (FO 6)	205.7	173.6	84.4%	\$20.60	\$20.11
Southeast (FO 7)	439.9	271.8	61.8%	\$19.00	\$17.92
Upper Midwest (FO 30)	964.5	219.2	22.7%	\$17.00	\$15.64
Central (FO 32)	980.6	398.2	40.6%	\$17.20	\$15.15
Mideast (FO 33)	1,475.8	578.7	39.2%	\$17.20	\$15.68
California (FO 51)	2,037.1	429.8	21.1%	\$17.30	\$14.85
Pacific Northwest (FO 124)	627.3	139.2	22.2%	\$17.10	\$15.15
Southwest (FO 126)	1,027.0	364.2	35.5%	\$18.20	\$15.68
Arizona (FO 131)	357.1	113.1	31.7%	\$17.55	\$15.55

For links to Market Administrator's webpages, see www.fmmaseattle.com/links.html.

In accordance with Federal civil rights law and U.S. Department of Agriculture (USDA) civil rights regulations and policies, the USDA, its Agencies, offices, and employees, and institutions participating in or administering USDA programs are prohibited from discriminating based on race, color, national origin, religion, sex, gender identity (including gender expression), sexual orientation, disability, age, marital status, family/parental status, income derived from a public assistance program, political beliefs, or reprisal or retaliation for prior civil rights activity, in any program or activity conducted or funded by USDA (not all bases apply to all programs). Remedies and complaint filing deadlines vary by program or incident.

Persons with disabilities who require alternative means of communication for program information (e.g., Braille, large print, audiotope, American Sign Language, etc.) should contact the responsible Agency or USDA's TARGET Center at (202) 720-2600 (voice and TTY) or contact USDA through the Federal Relay Service at (800) 877-8339. Additionally, program information may be made available in languages other than English.

To file a program discrimination complaint, complete the USDA Program Discrimination Complaint Form, AD-3027, found online at How to File a Program Discrimination Complaint and at any USDA office or write a letter addressed to USDA and provide in the letter all of the information requested in the form. To request a copy of the complaint form, call (866) 632-9992. Submit your completed form or letter to USDA by: (1) mail: U.S. Department of Agriculture, Office of the Assistant Secretary for Civil Rights, 1400 Independence Avenue, SW, Washington, D.C. 20250-9410; (2) fax: (202) 690-7442; or (3) email: program.intake@usda.gov.

USDA is an equal opportunity provider, employer, and lender.

E-mail the MA Office

fmmaseattle@fmmaseattle.com



Visit the MA Website

www.fmmaseattle.com

Bothell Office

1930 220th Street SE, Suite 102
Bothell, Washington 98021

Phone: (425) 487-6009

Fax: (425) 487-2775

Phoenix Office

4835 E Cactus Road, Suite 440
Scottsdale, Arizona 85254

Phone: (602) 547-2909

Fax: (602) 547-2906