



## Pacific Northwest and Arizona Marketing Areas

Lisa K. Wyatt, Market Administrator

Volume 46, No. 4

April 2020

Data for March 2020

### MARKET SUMMARIES FOR MARCH

#### Pacific Northwest (FO 124)

Producers delivered a total of 638.3 million pounds of milk to the market during March. Daily deliveries averaged 20.6 million pounds, down 8.1 percent from February. An estimated 387 producers delivered milk to the market during the month. Daily deliveries per producer averaged 53,202 pounds, up 10.7 percent from February.

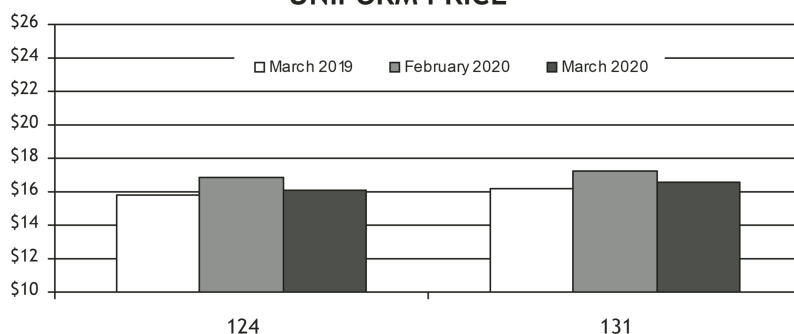
Class I producer milk during March totaled 154.9 million pounds, 24.3 percent of total producer receipts. Daily usage averaged 5.0 million pounds, up 10.8 percent from February. ▼

#### Arizona (FO 131)

Producers delivered a total of 462.5 million pounds of milk to the market during March. Daily deliveries averaged 14.9 million pounds, up 0.9 percent from February. An estimated 74 producers delivered milk to the market during the month. Daily deliveries per producer averaged 201,612 pounds, up 0.9 percent from February.

Class I producer milk during March totaled 116.8 million pounds, 25.3 percent of total producer receipts. Daily usage averaged 3.8 million pounds, up 12.3 percent from February. ▼

### UNIFORM PRICE



## Pool Quick Stats

Producer Prices & Component Levels	FO 124		FO 131	
	Feb	Mar	Feb	Mar
Uniform Price (at 3.5%)	\$16.82	\$16.11	\$17.25	\$16.56
Uniform Price (at test)	\$18.95	\$18.00	\$17.82	\$17.02
PPD	(\$0.18)	(\$0.14)		
Butterfat	\$1.9813	\$1.9177		n/a
Protein	\$3.0309	\$2.8424		
Other Solids	\$0.1750	\$0.1810		
Uniform Skim			\$10.60	\$10.14
Uniform Butterfat		n/a	\$2.0049	\$1.9363
Butterfat	4.142%	4.091%	3.801%	3.751%
Protein	3.270%	3.256%		
Other Solids	5.781%	5.782%		n/a

### HIGHLIGHTS THIS ISSUE

- ✓ USDA to Purchase Agricultural Commodities
- ✓ Overview of Component Tests of Producer Milk at the Farm Level: 2018

# Federal Order Price Summaries

## FINAL CLASS PRICES

The March 2020 Final Class Prices were calculated using AMS commodity price surveys from March 7, 14, 21, and 28, 2020. Current and archived Final Class Price announcements are available at [www.fmmaseattle.com/classcomponent.html](http://www.fmmaseattle.com/classcomponent.html).

FINAL	Class I (FO124)	Class I (FO131)	Class II	Class III	Class IV	Butterfat	Protein	Other Solids	Nonfat Solids
Feb 2020	\$19.45	\$19.90	\$16.84	\$17.00	\$16.20	\$1.9813	\$3.0309	\$0.1750	\$1.0667
Mar 2020	\$19.36	\$19.81	\$16.75	\$16.25	\$14.87	\$1.9177	\$2.8424	\$0.1810	\$0.9387
Change	(\$0.09)	(\$0.09)	(\$0.09)	(\$0.75)	(\$1.33)	(\$0.0636)	(\$0.1885)	\$0.0060	(\$0.1280)

## ADVANCED CLASS I PRICE

The May 2020 Advanced Price was calculated using AMS commodity price surveys from April 11 and 18, 2020. Current and archived Advanced Price announcements are available at [www.fmmaseattle.com/advance.html](http://www.fmmaseattle.com/advance.html).

ADVANCED	Base Butterfat	Class III Skim	Class IV Skim	Base Skim	Base Class I	Class I (FO124)	Class I (FO131)	Class II Skim	Class II Non-fat Solids
Apr 2020	\$1.9439	\$10.04	\$8.85	\$10.19	\$16.64	\$18.54	\$18.99	\$9.55	\$1.0611
May 2020	\$1.2948	\$8.93	\$7.03	\$8.72	\$12.95	\$14.85	\$15.30	\$7.73	\$0.8589
Change	(\$0.6491)	(\$1.11)	(\$1.82)	(\$1.47)	(\$3.69)	(\$3.69)	(\$3.69)	(\$1.82)	(\$0.2022)

# Commodity Price Summaries

### AMS COMMODITY PRICES FOR FINAL CLASS PRICES CALCULATION

	Feb	Mar	Change
Cheese	\$1.7884	\$1.7091	(\$0.0793)
Butter	\$1.8076	\$1.7551	(\$0.0525)
Nonfat Dry Milk	\$1.2453	\$1.1160	(\$0.1293)
Whey	\$0.3690	\$0.3748	\$0.0058

### AMS COMMODITY PRICES FOR ADVANCED CLASS PRICES CALCULATION

	Apr	May	Change
Cheese	\$1.7346	\$1.4120	(\$0.3226)
Butter	\$1.7767	\$1.2407	(\$0.5360)
Nonfat Dry Milk	\$1.1609	\$0.9564	(\$0.2045)
Whey	\$0.3729	\$0.3724	(\$0.0005)

## CURRENT COMMODITY PRICES

The AMS survey of cheddar cheese prices showed a net decrease in prices received for 40-pound blocks and a decrease for 500-pound barrels. The survey of 40-pound blocks showed a net decrease of 41.51 cents between the March 14 and the April 18 surveys, to \$1.3856 per pound. The survey of 500-pound barrels (adjusted to 38% moisture) showed a decrease of 38.75 cents to \$1.2132 per pound.

The AMS butter price showed a net decrease of 58.49 cents between the weeks ending March 14 and April 18 from \$1.8266 per pound to \$1.2417 per pound. The AMS nonfat dry milk showed a net decrease of 23.0 cents since mid-March to \$0.9338 per pound. The average price for AMS whey showed a net increase of 0.29 cents since mid-March to \$0.3739 per pound. ▼

# Monthly Selected Statistics

PRICE & POOL DATA	PACIFIC NORTHWEST				ARIZONA			
	Mar 2020	Feb 2020	Mar 2019	Feb 2019	Mar 2020	Feb 2020	Mar 2019	Feb 2019
<b>Producer Prices</b>								
Producer Price Differential (\$/cwt)	(\$0.14)	(\$0.18)	\$0.75	\$1.39	+	+	+	+
Butterfat (\$/pound)	1.9177	1.9813	2.5461	2.5345	+	+	+	+
Protein (\$/pound)	2.8424	3.0309	1.6303	1.1776	+	+	+	+
Other Solids (\$/pound)	0.1810	0.1750	0.2200	0.2631	+	+	+	+
Uniform Skim Price (\$/cwt)	+	+	+	+	\$10.14	\$10.60	\$7.50	\$7.14
Uniform Butterfat Price (\$/pound)	+	+	+	+	1.9363	2.0049	2.5536	2.5340
Statistical Uniform Price (\$/cwt)	\$16.11	\$16.82	\$15.79	\$15.28	\$16.56	\$17.25	\$16.18	\$15.76
<b>Producer Data</b>								
Number of Producers	<b>387</b>	466	505	416	<b>74</b>	74	79	80
Avg. Daily Production (pounds)	<b>53,202</b>	48,053	48,178	51,885	<b>201,612</b>	199,919	188,957	184,700
<b>Producer Milk Ratios</b>								
Class I	24.27%	20.15%	19.34%	22.98%	25.26%	22.69%	22.53%	23.59%
Class II	6.46%	6.25%	5.78%	5.39%	7.51%	5.49%	7.64%	7.77%
Class III	28.34%	33.41%	41.73%	46.21%	24.49%	27.57%	29.39%	29.66%
Class IV	40.93%	40.19%	33.15%	25.42%	42.74%	44.25%	40.44%	38.98%
<b>Market Shrinkage</b>								
Pounds	7,113,322	6,927,387	13,255,497	8,169,008	3,037,051	3,653,243	2,476,458	2,651,828
% of Producer Milk	1.11%	1.07%	1.76%	1.35%	0.66%	0.85%	0.54%	0.64%

+ Not Applicable. Preliminary data indicated in **bold**.

# Monthly Supplemental Statistics

SUPPLEMENTAL DATA	PACIFIC NORTHWEST				ARIZONA			
	Feb 2020	Jan 2020	Feb 2019	Jan 2019	Feb 2020	Jan 2020	Feb 2019	Jan 2019
<b>Number of Handlers</b>								
Pool Handlers	20	21	22	23	8	8	8	8
<i>Distributing Plants</i>	11	11	11	11	6	6	6	6
<i>Supply Plants 1/</i>	5	6	5	6	1	1	1	1
<i>Cooperatives</i>	4	4	6	6	1	1	1	1
Producer-Handlers	5	5	5	5	0	0	0	0
Other Plants w/ Class I Use	<b>31</b>	29	29	27	<b>29</b>	29	26	24
<b>Class I Route Disposition In Area</b>								
By Pool Plants	123,852,206	135,297,928	128,222,817	141,318,492	72,640,056	78,582,002	72,550,319	81,602,348
By Producer-Handlers	5,497,729	5,929,313	5,796,750	6,366,854	0	0	0	0
By Other Plants	<b>13,588,241</b>	14,927,130	12,297,402	12,301,997	<b>8,536,015</b>	12,085,063	6,765,801	8,680,060
Total	142,938,176	156,154,371	146,316,969	159,987,343	81,176,071	90,667,065	79,316,120	90,282,408
<b>Producer-Handler Data</b>								
% Class I Use	48.80%	48.70%	55.73%	51.58%	0.00%	0.00%	0.00%	0.00%
% of Total In-Area Route Dispositions	3.85%	3.80%	3.96%	3.98%	0.00%	0.00%	0.00%	0.00%

Preliminary data indicated in **bold**. 1/ Includes Cooperative Pool Manufacturing Plants.

# Monthly Statistical Summary

## PACIFIC NORTHWEST

## ARIZONA

RECEIPTS & UTILIZATION	Mar	Feb	Mar	Feb	Mar	Feb	Mar	Feb
	2020	2020	2019	2019	2020	2020	2019	2019
<b>Receipts of Milk</b>								
Total Producer Milk	638,264,338	649,390,181	754,229,996	604,358,507	462,498,920	429,026,209	462,755,602	413,728,223
Receipts From Other Sources	8,227,915	10,718,680	8,474,655	8,975,911	5,530,874	4,333,003	5,236,271	4,266,818
Opening Inventory	35,279,965	38,092,946	37,146,975	33,852,468	26,621,564	26,191,370	22,926,422	25,546,995
<b>Total To Be Accounted For</b>	<b>681,772,218</b>	<b>698,201,807</b>	<b>799,851,626</b>	<b>647,186,886</b>	<b>494,651,358</b>	<b>459,550,582</b>	<b>490,918,295</b>	<b>443,542,036</b>
<b>Utilization of Receipts</b>								
Whole milk	48,636,351	40,320,993	42,131,588	40,483,437	32,683,066	25,915,291	27,283,606	25,071,082
Flavored milk & drinks	8,952,233	10,602,171	11,917,052	11,056,639	4,235,497	5,976,576	6,574,014	6,530,238
2% milk	54,278,507	45,201,723	48,429,761	47,058,021	33,214,461	26,327,728	27,870,421	25,842,945
1% milk	20,382,905	17,480,637	19,223,386	18,314,270	9,635,898	9,385,092	10,743,515	10,038,935
Skim milk	9,971,946	8,787,213	10,041,388	9,858,554	4,854,651	4,563,410	4,953,977	5,067,119
Buttermilk	1,409,739	1,459,469	1,545,496	1,451,896	438,056	471,959	2/	2/
Class I dispositions in area	143,631,681	123,852,206	133,288,671	128,222,817	85,061,629	72,640,056	77,425,533	72,550,319
Class I dispositions out of area	9,628,649	7,582,989	10,931,051	9,625,977	29,588,595	24,441,203	27,038,342	24,767,909
Other Class I usage	21,018,141	20,951,910	20,405,467	20,608,141	16,565,593	15,380,417	12,852,398	13,277,441
<b>Utilization by Class</b>								
Total Class I Use	174,278,471	152,387,105	164,625,189	158,456,935	131,215,817	112,461,676	117,316,273	110,595,669
Total Class II Use	45,062,499	45,203,245	47,909,803	37,102,789	35,706,504	24,240,051	37,208,982	33,553,979
Total Class III Use	180,904,931	216,961,920	315,153,367	280,007,505	113,286,192	118,304,038	137,433,125	124,116,209
Total Class IV Use	281,526,317	283,649,537	272,163,267	171,619,657	214,442,845	204,544,817	198,959,915	175,276,179
<b>Total Accounted For</b>	<b>681,772,218</b>	<b>698,201,807</b>	<b>799,851,626</b>	<b>647,186,886</b>	<b>494,651,358</b>	<b>459,550,582</b>	<b>490,918,295</b>	<b>443,542,036</b>

## PACIFIC NORTHWEST

## ARIZONA

CLASSIFICATION OF RECEIPTS	Mar	Feb	Mar	Feb	Mar	Feb	Mar	Feb
	2020	2020	2019	2019	2020	2020	2019	2019
<b>Producer milk</b>								
Class I	154,935,504	130,845,078	145,865,882	138,874,864	116,840,646	97,328,960	104,276,472	97,597,894
Class II	41,239,608	40,608,631	43,575,372	32,582,302	34,721,830	23,536,006	35,374,048	32,155,313
Class III	180,904,931	216,961,720	314,725,412	279,299,333	113,286,192	118,290,846	136,000,897	122,726,619
Class IV	261,184,295	260,974,752	250,063,330	153,602,008	197,650,252	189,870,397	187,104,185	161,248,397
<b>Other receipts</b>								
Class I	19,342,967	21,542,027	18,759,307	19,582,071	14,375,171	15,132,716	13,039,801	12,997,775
Class II	3,822,891	4,594,614	4,334,431	4,520,487	1/	1/	1,834,934	1/
Class III	0	1/	427,955	708,172	0	1/	1,432,228	1,389,590
Class IV	20,342,022	22,674,985	22,099,937	18,017,649	17,777,267	15,391,657	11,855,730	15,426,448
<b>Avg. daily producer receipts</b>	<b>20,589,172</b>	<b>22,392,765</b>	<b>24,330,000</b>	<b>21,584,232</b>	<b>14,919,320</b>	<b>14,794,007</b>	<b>14,927,600</b>	<b>14,776,008</b>
Change From Previous Year	-15.38%	3.75%	18.78%	-10.68%	-0.06%	0.12%	4.80%	-3.39%
<b>Avg. daily Class I use</b>	<b>5,621,886</b>	<b>5,254,728</b>	<b>5,310,490</b>	<b>5,659,176</b>	<b>4,232,768</b>	<b>3,877,989</b>	<b>3,784,396</b>	<b>3,949,845</b>
Change From Previous Year	5.86%	-7.15%	-7.43%	-1.75%	11.85%	-1.82%	-5.87%	-3.18%

1/ Restricted - Included with Class IV. 2/ Restricted - Included with Flavored milk and drinks.

## USDA News

### USDA TO PURCHASE UP TO \$3 BILLION IN AGRICULTURAL COMMODITIES, ISSUE SOLICITATIONS FOR INTERESTED PARTICIPANTS

The following is an excerpt of a statement released by the U.S. Department of Agriculture (USDA) on April 19.

As part of President Trump and Secretary Perdue's April 17th announcement of a \$19 billion Coronavirus Farm Assistance Program, USDA announced that it is exercising authority under the Families First Coronavirus Response Act to purchase and distribute up to \$3 billion of agricultural products to those in need. USDA will partner with regional and local distributors, whose workforce has been significantly impacted by the closure of many restaurants, hotels, and other food service entities, to purchase \$3 billion in fresh produce, dairy, and meat products. USDA's Agricultural Marketing Service (AMS) will procure an estimated \$100 million per month in fresh fruits and vegetables, \$100 million per month in a variety of dairy products and \$100 million per month in meat products to provide a pre-approved box of fresh produce, dairy, and meat products to food banks and other non-profits serving Americans in need.

USDA will issue a solicitation in the next two weeks to invite proposals from offerors to supply commodity boxes to non-profit organizations, identified by the offeror, on a mutually agreeable, recurring schedule. USDA will award contracts for the purchase of the agricultural products, the assembly of commodity boxes and delivery to identified non-profit organizations that can receive, store and distribute food items.

An informational webinar for interested participants was held at 2 p.m. EDT on Tuesday, April 21, 2020, to provide an overview of the program and instructions for submitting offers. If you were unable to participate in the webinar, a recording will be available.

Email questions to [USDAFoodBoxDistributionProgram@usda.gov](mailto:USDAFoodBoxDistributionProgram@usda.gov). To receive updates by e-mail, subscribe online by visiting: "[Stay up to date on USDA Food Purchases](#)" available on the [AMS Commodity Procurement website](#). 🐾

Source: USDA. Agricultural Marketing Service <https://www.ams.usda.gov/content/usda-purchase-3-billion-agricultural-commodities-issue-solicitations-interested-participants>.

---

### OVERVIEW OF COMPONENT TESTS OF PRODUCER MILK AT THE FARM LEVEL: 2018

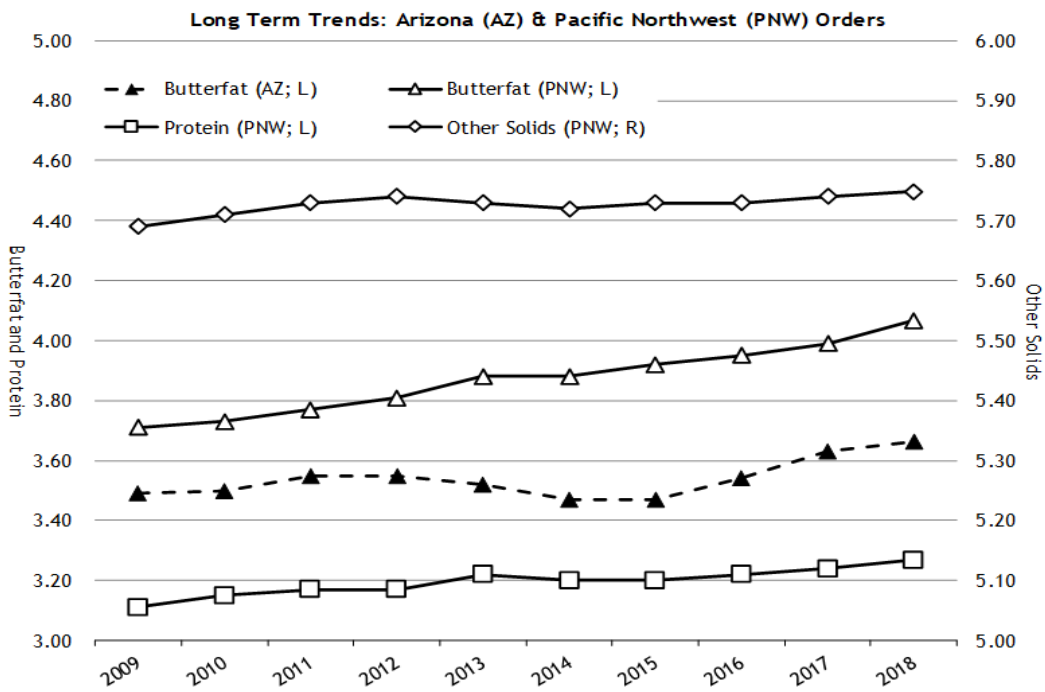
The market administrator's office recently published an overview of component tests of producer milk pooled on the Pacific Northwest and Arizona Federal Milk Marketing Orders. The tables summarize average tests by order, month, year, region, size-range of production, and long term trends. Producer milk values are also calculated using Federal order minimum producer prices for the respective orders at 3.5% butterfat and at test. All test and value averages are weighted averages. *Continued on next page...*

# USDA News

## OVERVIEW OF COMPONENT TESTS OF PRODUCER MILK AT THE FARM LEVEL: 2018 - CONTINUED FROM PAGE 5

The farm level data included in these tables comprises all producers and producer milk pooled on the Pacific Northwest and Arizona Orders. The data was collected from producer payrolls submitted by handlers to the market administrator's office. Components available for the Pacific Northwest Order are butterfat, protein, and other solids. Other solids are lactose and minerals. The component for the Arizona Order is butterfat. In certain months, milk production that historically qualified to be pooled on an order may not have been pooled due to price relationships. This historically eligible producer milk is not included in this analysis. Large changes in producer numbers and producer milk typically indicate those months when milk was not pooled due to price relationships. Small differences may be evident between published pool information and the data shown in this overview due to the use of partially audited payroll data.

The graph below provides one aspect of the data included in the overview. A new statistic is added to the 2018 overview which indicates what portion of FO values can be attributed to each component for the Pacific Northwest Order (Table T-5) and Arizona Order (Table T-10).



The overview can be found at <http://fmmaseattle.com/staffpapers.html> under Component Tests/Levels of Producer Milk at the Farm Level: Pacific Northwest and Arizona Federal Orders. Please contact John Mykrantz at [jmykrantz@fmmaseattle.com](mailto:jmykrantz@fmmaseattle.com) or 425-487-5612, if you have any questions. 🍷

# Federal Order Statistics for March 2020

Federal Order Name (Number)	Producer Deliveries	Class I Receipts	Class I Utilization	Class I Price	Uniform Price
	<i>- million pounds -</i>			<i>- per cwt (at location) -</i>	
Northeast (FO 1)	2,365.7	731.8	30.9%	\$20.71	\$17.74
Appalachian (FO 5)	493.3	349.0	70.7%	\$20.86	\$19.49
Florida (FO 6)	231.7	191.0	82.4%	\$22.86	\$21.64
Southeast (FO 7)	463.4	306.6	66.2%	\$21.26	\$19.64
Upper Midwest (FO 30)	2,545.6	245.3	9.6%	\$19.26	\$16.42
Central (FO 32)	1,444.2	426.5	29.5%	\$19.46	\$16.40
Mideast (FO 33)	1,747.7	618.2	35.4%	\$19.46	\$16.97
California (FO 51)	2,036.3	481.0	23.6%	\$19.56	\$16.02
<b>Pacific Northwest (FO 124)</b>	<b>638.3</b>	<b>154.9</b>	<b>24.3%</b>	<b>\$19.36</b>	<b>\$16.11</b>
Southwest (FO 126)	1,007.0	389.6	38.7%	\$20.46	\$17.12
<b>Arizona (FO 131)</b>	<b>462.5</b>	<b>116.8</b>	<b>25.3%</b>	<b>\$19.81</b>	<b>\$16.56</b>

For links to Market Administrator's webpages, see [www.fmmaseattle.com/links.html](http://www.fmmaseattle.com/links.html).

In accordance with Federal civil rights law and U.S. Department of Agriculture (USDA) civil rights regulations and policies, the USDA, its Agencies, offices, and employees, and institutions participating in or administering USDA programs are prohibited from discriminating based on race, color, national origin, religion, sex, gender identity (including gender expression), sexual orientation, disability, age, marital status, family/parental status, income derived from a public assistance program, political beliefs, or reprisal or retaliation for prior civil rights activity, in any program or activity conducted or funded by USDA (not all bases apply to all programs). Remedies and complaint filing deadlines vary by program or incident.

Persons with disabilities who require alternative means of communication for program information (e.g., Braille, large print, audiotope, American Sign Language, etc.) should contact the responsible Agency or USDA's TARGET Center at (202) 720-2600 (voice and TTY) or contact USDA through the Federal Relay Service at (800) 877-8339. Additionally, program information may be made available in languages other than English.

To file a program discrimination complaint, complete the USDA Program Discrimination Complaint Form, AD-3027, found online at How to File a Program Discrimination Complaint and at any USDA office or write a letter addressed to USDA and provide in the letter all of the information requested in the form. To request a copy of the complaint form, call (866) 632-9992. Submit your completed form or letter to USDA by: (1) mail: U.S. Department of Agriculture, Office of the Assistant Secretary for Civil Rights, 1400 Independence Avenue, SW, Washington, D.C. 20250-9410; (2) fax: (202) 690-7442; or (3) email: [program.intake@usda.gov](mailto:program.intake@usda.gov).

USDA is an equal opportunity provider, employer, and lender.

## E-mail the MA Office

[fmmaseattle@fmmaseattle.com](mailto:fmmaseattle@fmmaseattle.com)



## Visit the MA Website

[www.fmmaseattle.com](http://www.fmmaseattle.com)

### Bothell Office

1930 220th Street SE, Suite 102  
Bothell, Washington 98021

Phone: (425) 487-6009

Fax: (425) 487-2775

### Phoenix Office

4835 E Cactus Road, Suite 440  
Scottsdale, Arizona 85254

Phone: (602) 547-2909

Fax: (602) 547-2906