



# The Market Administrator's Report

*Facilitating the Efficient Marketing of Milk*

## Pacific Northwest and Arizona Marketing Areas

*William A. Wise, Market Administrator*

Volume 40, No. 5

May 2014

Data for April 2014

### MARKET SUMMARIES FOR APRIL

#### Pacific Northwest (FO 124)

Producers delivered a total of 578.7 million pounds of milk to the market during April. Daily deliveries averaged 19.3 million pounds, down 20.7 percent from March. An estimated 471 producers delivered milk to the market during the month. Daily deliveries per producer averaged 40,958 pounds, down 1.6 percent from March.

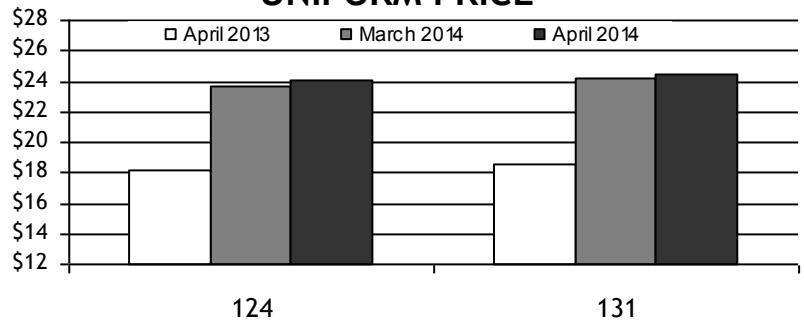
Class I producer milk during April totaled 168.4 million pounds, 29.1 percent of total producer receipts. Daily usage averaged 5.6 million pounds, up 2.3 percent from March. 🐄

#### Arizona (FO 131)

Producers delivered a total of 419.8 million pounds of milk to the market during April. Daily deliveries averaged 14.0 million pounds, down 4.0 percent from March. An estimated 93 producers delivered milk to the market during the month. Daily deliveries per producer averaged 150,463 pounds, down 4.0 percent from March.

Class I producer milk during April totaled 107.2 million pounds, 25.6 percent of total producer receipts. Daily usage averaged 3.6 million pounds, up 0.2 percent from March. 🐄

### UNIFORM PRICE



## Pool Quick Stats

Producer Prices & Component Levels	FO 124		FO 131	
	Mar	Apr	Mar	Apr
Uniform Price (at 3.5%)	\$23.68	\$24.03	\$24.22	\$24.43
Uniform Price (at test)	\$25.56	\$25.37	\$24.12	\$24.24
PPD	\$0.35	(\$0.28)		
Butterfat	\$2.0402	\$2.1207		n/a
Protein	\$4.5172	\$4.7089		
Other Solids	\$0.4700	\$0.4926		
Uniform Skim			\$17.69	\$17.66
Uniform Butterfat		n/a	\$2.0440	\$2.1103
Butterfat	3.908%	3.771%	3.442%	3.403%
Protein	3.220%	3.150%		
Other Solids	5.732%	5.731%		n/a

### HIGHLIGHTS THIS ISSUE

- ✓ 2013 Mailbox Milk Prices
- ✓ Dairy Products, 2013 Summary
- ✓ 2012 Census of Agriculture

# Federal Order Price Summaries

## FINAL CLASS PRICES

The April 2014 Final Class Prices were calculated using AMS commodity price surveys from April 5, 12, 19, and 26, 2014. Current and archived Final Class Price announcements are available at [www.fmmaseattle.com/finalprice.htm](http://www.fmmaseattle.com/finalprice.htm).

FINAL	Class I (FO124)	Class I (FO131)	Class II	Class III	Class IV	Butterfat	Protein	Other Solids	Nonfat Solids
Mar 2014	\$25.54	\$25.99	\$24.22	\$23.33	\$23.66	\$2.0402	\$4.5172	\$0.4700	\$1.9027
Apr 2014	\$25.55	\$26.00	\$24.74	\$24.31	\$23.34	\$2.1207	\$4.7089	\$0.4926	\$1.8328
Change	\$0.01	\$0.01	\$0.52	\$0.98	(\$0.32)	\$0.0805	\$0.1917	\$0.0226	(\$0.0699)

## ADVANCED CLASS I PRICE

The June 2014 Advanced Price was calculated using AMS commodity price surveys from May 10 and 17, 2014. Current and archived Advanced Price announcements are available at [www.fmmaseattle.com/advanceprice.htm](http://www.fmmaseattle.com/advanceprice.htm).

ADVANCED	Butterfat	Class III Skim	Class IV Skim	Base Skim	Base Class I	Class I (FO124)	Class I (FO131)	Class II Skim	Class II Non-fat Solids
May 2014	\$2.1790	\$17.45	\$16.36	\$17.45	\$24.47	\$26.37	\$26.82	\$17.06	\$1.8956
June 2014	\$2.2356	\$15.58	\$15.23	\$15.58	\$22.86	\$24.76	\$25.21	\$15.93	\$1.7700
Change	\$0.0566	(\$1.87)	(\$1.13)	(\$1.87)	(\$1.61)	(\$1.61)	(\$1.61)	(\$1.13)	(\$0.1256)

# Commodity Price Summaries

## AMS COMMODITY PRICES FOR FINAL CLASS PRICES CALCULATION

	March	April	Change
Cheese	\$2.2689	\$2.3547	\$0.0858
Butter	\$1.8562	\$1.9227	\$0.0665
Nonfat Dry Milk	\$2.0897	\$2.0191	(\$0.0706)
Whey	\$0.6554	\$0.6774	\$0.0220

## AMS COMMODITY PRICES FOR ADVANCED CLASS PRICES CALCULATION

	May	June	Change
Cheese	\$2.3695	\$2.2029	(\$0.1666)
Butter	\$1.9708	\$2.0176	\$0.0468
Nonfat Dry Milk	\$2.0040	\$1.8768	(\$0.1272)
Whey	\$0.6751	\$0.6724	(\$0.0027)

## CURRENT COMMODITY PRICES

The AMS survey of cheddar cheese prices showed a decrease in prices received for 40-pound blocks and net decrease for 500-pound barrels. The survey of 40-pound blocks showed a decrease of 20.13 cents between the April 19 and the May 17 surveys, to \$2.1602 per pound. The survey of 500-pound barrels (adjusted to 38% moisture) showed a net decrease of 11.66 cents to \$2.1651 per pound.

The AMS butter price showed a net increase of 9.16 cents between the weeks ending April 19 and May 17 from \$1.9628 per pound to \$2.0544 per pound. The AMS nonfat dry milk showed a net decrease of 15.56 cents since mid-April to \$1.8556 per pound. The average price for AMS whey showed a net decrease of 0.64 cents since mid-April to \$0.6727 per pound.

A current summary of various commodity prices is available at [www.fmmaseattle.com/prices.htm](http://www.fmmaseattle.com/prices.htm). 

# Annual Summaries

## 2013 MILK PRODUCTION, DISPOSITION, AND INCOME

On April 29, 2014, USDA's National Agricultural Statistics Service (NASS) published the annual summary of 2013 data for U.S. milk production, disposition, and income.

Milk production increased 0.3 percent in 2013 to 201 billion pounds. The rate per cow, at 21,822 pounds, was 102 pounds above 2012. The annual average number of milk cows on farms was 9.22 million head, down 12,000 head from 2012.

Cash receipts from marketings of milk during 2013 totaled \$40.3 billion, 8.7 percent higher than 2012. Producer returns averaged \$20.12 per hundredweight, 8.4 percent above 2012. Marketings totaled 200.2 billion pounds, 0.3 percent above 2012. Marketings include whole milk sold to plants and dealers and milk sold directly to consumers.

An estimated 980 million pounds of milk were used on farms where produced, 2.4 percent more than 2012. Calves were fed 90 percent of this milk, with the remainder consumed in producer households. ▼

Source: USDA. National Agricultural Statistics Service. "Milk Production, Disposition, and Income 2013 Summary", published April 29, 2014. Available at [www.nass.usda.gov](http://www.nass.usda.gov).

## 2013 MAILBOX MILK PRICES

For 2013, mailbox milk prices for selected reporting areas in Federal milk orders averaged \$20.06 per cwt., \$1.47 higher than the all-area average reported for 2012. The component tests of producer milk in 2013 averaged: butterfat, 3.76%, protein, 3.12%, and other solids, 5.74%. On an individual reporting area basis, mailbox prices increased for all Federal order milk reporting areas, and ranged from \$22.95 in Florida to \$17.93 in New Mexico. The Southern Missouri reporting area experienced the largest annual increase of \$2.38/cwt, while the Minnesota reporting area experienced the lowest annual increase of \$0.84/cwt. The Northwest States reporting area increased \$1.71/cwt., from \$18.02 to \$19.73. ▼

Source: USDA. Agricultural Marketing Service. Dairy Programs. "Dairy Market News", Volume 81, Report 16.

## DAIRY PRODUCTS, 2013 SUMMARY

Total cheese production, excluding cottage cheeses, was 11.1 billion pounds, 2.0 percent above 2012 production. Wisconsin was the leading State with 25.7 percent of the production.

Italian varieties, with 4.74 billion pounds were 2.2 percent above 2012 production and accounted for 42.7 percent of total cheese in 2013. Mozzarella accounted for 78.1 percent of the Italian production followed by Provolone with 7.6 percent and Parmesan with 6.8 percent. California was the leading State in Italian cheese production with 30.8 percent of the production.

American type cheese production was 4.42 billion pounds, 1.5 percent above 2012 and accounted for 39.8 percent of total cheese in 2013. Wisconsin was the leading State in American type cheese production with 19.0 percent of the production.

Butter production in the United States during 2013 totaled 1.86 billion pounds, 0.2 percent above 2012. California accounted for 34.1 percent of the production.

Dry milk powders (2013 United States production, comparisons with 2012) Nonfat dry milk for human food totaled 1.48 billion pounds, down 16.2 percent. Skim milk powders totaled 631 million pounds, up 65.7 percent.

Dry whey totaled 961 million pounds in 2013, down 3.8 percent from 2012. Lactose, for both human and animal food, was 1.04 billion pounds in 2013, up 1.3 percent. Whey protein concentrate, totaled 498 million pounds, up 8.3 percent from 2012.

In 2013, regular ice cream totaled 1,052 million gallons, down slightly from 2012. Lowfat ice cream decreased 2.8 percent from 2012, totaling 651 million gallons. ▼

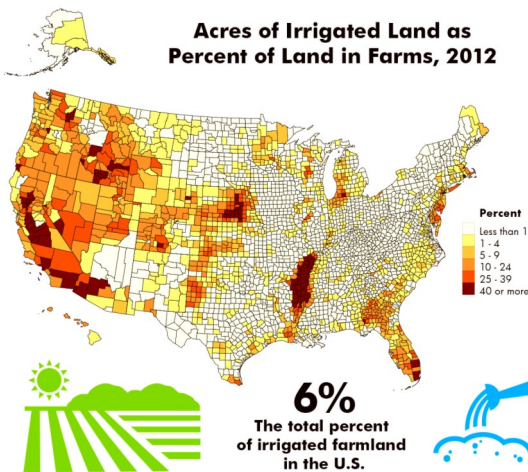
Source: USDA. National Agricultural Statistics Service. "Dairy Products 2013 Summary", published April 29, 2014. Available at [www.nass.usda.gov](http://www.nass.usda.gov).

# 2012 Census of Agriculture



## U.S. Agriculture Practices

The 2012 Census of Agriculture lets us know how farmers and ranchers operate, from the modern agricultural practices and technologies they adopt to the inputs and equipment they use. Census data help support innovation and new policies in production and land use.



**57,299**

The number of farms that reported using a renewable energy producing system in 2012.



**That's more than double the 23,451 operations in 2007.**

**36,331**

The number of farms reporting solar panels in 2012.



**Accounting for 63% of renewable energy producing systems used on farms.**

**96.5 MILLION**

The number of no-till acres reported by producers in the U.S. for 2012.

**That's more than the entire land area of Nebraska and Missouri combined.**

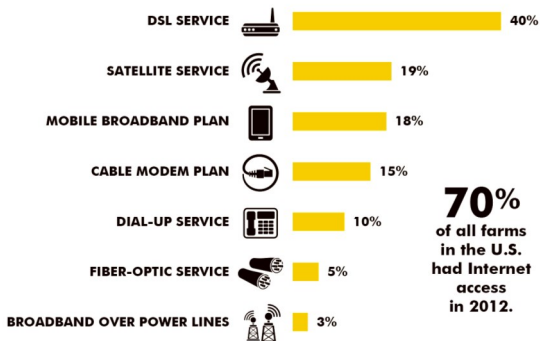
**\$19.5 BILLION**

The total value spent on seeds by U.S. farmers in 2012. **One of the top 10 agriculture production expenses in the U.S.**



**Up 66% from 2007.\***

### Type of Internet Access on Farms, 2012



**\$817.6 MILLION**

The value of organic sales from farms specializing in dairy and milk production in the U.S. in 2012.

**More than 25% of all organic agriculture sales in the nation.**



**\$115,706**

The average value of all machinery and equipment on a U.S. farm in 2012.

**Up 31% from 2007.\***

**That's the value of about 4,285 tickets to a major league baseball game.**



On May 2, 2014, USDA issued the 2012 Census of Agriculture; the 28th Federal census of agriculture and the fourth conducted by USDA's National Agricultural Statistics Service (NASS). The U.S. Department of Commerce, Bureau of the Census conducted the census of agriculture for 156 years (1840-1996). The 1997 Appropriations Act contained a provision that transferred the responsibility of the census to NASS.

The history of collecting data on U.S. agriculture dates as far back as President George Washington, who kept meticulous statistical records describing his own and other farms.

The census of agriculture provides a detailed picture of U.S. farms and ranches every five years. It is the only source of uniform, comprehensive agricultural data for every State and county or county equivalent. Census of agricultural data are routinely used by farm organizations, businesses, State department of agriculture, elected representatives and legislative bodies at all levels of government, public and private sector analysts, the news media, and colleges and universities.

For more information, see: [www.agcensus.usda.gov](http://www.agcensus.usda.gov).

Source: USDA. National Agricultural Statistics Service. Available at [www.nass.usda.gov](http://www.nass.usda.gov).

\* Statistically significant change. Visit <http://bit.ly/AgCensusFAQs>.

# Industry News

## USDA ANNOUNCES FINAL RULES TO AMEND THE APPALACHIAN, SOUTHEAST AND FLORIDA MILK MARKETING ORDERS

On May 1, 2014, the United States Department of Agriculture announced two final rules and a termination of a proceeding that permanently adopt amendments to the Appalachian, Southeast and Florida federal milk marketing orders.

These actions: establish a mileage rate factor using a fuel cost adjustor used in the transportation credit provisions of the Appalachian and Southeast orders; increase the maximum transportation credit assessment rate for both orders; establish a zero diversion limit standard on loads of milk requesting transportation credit; adjust the Class I pricing surface for the Appalachian, Florida and Southeast orders; adjust certain features of the diversion limit, touch-base and transportation credit provisions for the Appalachian and Southeast orders and increase the maximum administrative assessment for the Appalachian, Florida and Southeast marketing orders.

These amendments were approved by producers in the three marketing orders. The amendments became effective on May 5, 2014. The department also terminated a proceeding for two remaining proposals. Information about the final rules and the terminated proceeding were published in the May 2, 2014, Federal Register.

For more information, contact the Market Administrators for the Appalachian or the Florida and Southeast federal milk marketing orders. 🐄

## 2012 ANALYSIS OF COMPONENT LEVELS IN INDIVIDUAL HERD MILK AT THE FARM LEVEL: PACIFIC NORTHWEST AND ARIZONA FEDERAL MILK MARKETING ORDERS

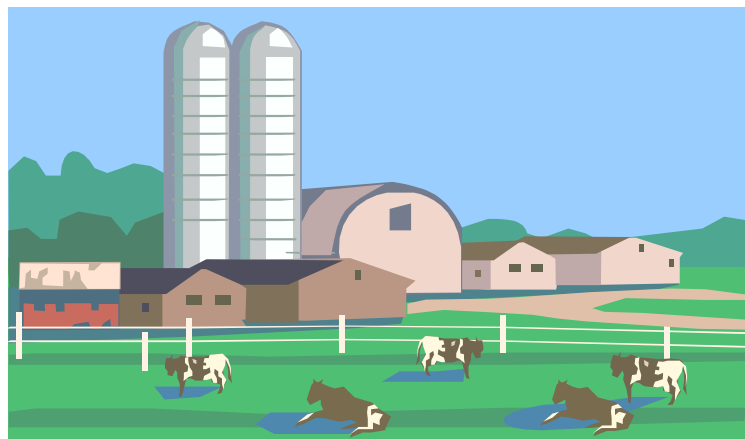
On April 4, 2014, the Bothell Market Administrator's office released a staff paper entitled: "Analysis of Component Levels in Individual Herd Milk at the Farm Level: 2012." The analysis covers the Pacific Northwest (FO 124) and Arizona (FO 131) Orders.

For 2012, a monthly average of total of 627 producers were pooled on the Pacific Northwest and Arizona Orders. During 2012, these producers delivered 11.2 billion pounds to the two markets. The milk shed of the two Federal orders includes Arizona, California, Idaho, Oregon, Texas, Utah, and Washington.

During 2012, component levels in the Pacific Northwest Order averaged 3.81% butterfat, 3.17% protein, and 5.74% other solids. Butterfat levels in the Arizona Order averaged 3.55%. In both orders, butterfat levels decreased during the summer months and increased in the late fall and winter. In the Pacific Northwest Order, protein levels showed similar seasonality as butterfat.

Although the volume of producer milk, number of producers, and average milk production per producer varies greatly between geographical regions, there were relatively small differences in aggregate component levels between these geographic regions within the milk sheds of the two orders.

The staff paper is available at [www.fmmaseattle.com/historicaldata.htm](http://www.fmmaseattle.com/historicaldata.htm). 🐄



# Monthly Selected Statistics

PRICE & POOL DATA	PACIFIC NORTHWEST				ARIZONA			
	Apr 2014	Mar 2014	Apr 2013	Mar 2013	Apr 2014	Mar 2014	Apr 2013	Mar 2013
<b>Minimum Class Prices (3.5% B.F.)</b>								
Class I Milk (\$/cwt)	\$25.55	\$25.54	\$19.56	\$19.70	\$26.00	\$25.99	\$20.01	\$20.15
Class II Milk (\$/cwt)	24.74	24.22	18.73	18.82	24.74	24.22	18.73	18.82
Class III Milk (\$/cwt)	24.31	23.33	17.59	16.93	24.31	23.33	17.59	16.93
Class IV Milk (\$/cwt)	23.34	23.66	18.10	17.75	23.34	23.66	18.10	17.75
<b>Producer Prices</b>								
Producer Price Differential (\$/cwt)	(\$0.28)	\$0.35	\$0.57	\$0.89	+	+	+	+
Butterfat (\$/pound)	2.1207	2.0402	1.8227	1.7476	+	+	+	+
Protein (\$/pound)	4.7089	4.5172	3.0130	2.8204	+	+	+	+
Other Solids (\$/pound)	0.4926	0.4700	0.3863	0.4179	+	+	+	+
Uniform Skim Price (\$/cwt)	+	+	+	+	\$17.66	\$17.69	\$12.71	\$12.65
Uniform Butterfat Price (\$/pound)	+	+	+	+	2.1103	2.0440	1.8119	1.7394
Statistical Uniform Price (\$/cwt)	\$24.03	\$23.68	\$18.16	\$17.82	\$24.43	\$24.22	\$18.61	\$18.30
<b>Producer Data</b>								
Number of Producers	<b>471</b>	584	595	598	<b>93</b>	93	92	92
Avg. Daily Production (pounds)	<b>40,958</b>	41,634	40,290	39,218	<b>150,463</b>	156,764	150,695	152,348
<b>Producer Milk Ratios</b>								
Class I	29.10%	22.58%	24.17%	24.39%	25.55%	24.48%	27.96%	26.45%
Class II	8.40%	6.29%	5.90%	6.28%	10.75%	9.17%	7.20%	7.31%
Class III	25.28%	42.27%	44.10%	43.80%	22.57%	25.71%	26.18%	27.21%
Class IV	37.22%	28.86%	25.83%	25.53%	41.13%	40.64%	38.66%	39.03%

+ Not Applicable. Preliminary data indicated in **bold**.

# Monthly Supplemental Statistics

SUPPLEMENTAL DATA	PACIFIC NORTHWEST				ARIZONA			
	Mar 2014	Feb 2014	Mar 2013	Feb 2013	Mar 2014	Feb 2014	Mar 2013	Feb 2013
<b>Number of Handlers</b>								
Pool Handlers	24	21	25	25	7	7	7	7
<i>Distributing Plants</i>	13	13	14	14	5	5	5	5
<i>Supply Plants 1/</i>	6	3	6	6	1	1	1	1
<i>Cooperatives</i>	5	5	5	5	1	1	1	1
Producer-Handlers	5	5	5	5	0	0	0	0
Other Plants w/ Class I Use	<b>19</b>	20	15	15	<b>23</b>	22	19	20
<b>Class I Route Disposition In Area</b>								
By Pool Plants	152,685,874	143,547,276	161,764,575	151,492,451	87,044,497	81,425,775	90,375,071	84,655,674
By Producer-Handlers	7,246,652	6,931,370	7,014,455	6,796,487	0	0	0	0
By Other Plants	<b>10,694,567</b>	9,762,607	8,972,530	8,479,110	<b>8,516,408</b>	8,442,108	5,908,822	5,878,522
Total	170,627,093	160,241,253	177,751,560	166,768,048	95,560,905	89,867,883	96,283,893	90,534,196
<b>Producer-Handler Data</b>								
% Class I Use	61.44%	68.51%	69.02%	68.07%	0.00%	0.00%	0.00%	0.00%
% of Total In-Area Route Dispositions	4.25%	4.33%	3.95%	4.08%	0.00%	0.00%	0.00%	0.00%

Preliminary data indicated in **bold**. 1/ Includes Cooperative Pool Manufacturing Plants.

# Monthly Statistical Summary

RECEIPTS & UTILIZATION	PACIFIC NORTHWEST				ARIZONA			
	Apr	Mar	Apr	Mar	Apr	Mar	Apr	Mar
	2014	2014	2013	2013	2014	2014	2013	2013
<b>Receipts of Milk</b>								
Total Producer Milk	578,737,220	753,741,111	719,183,404	727,016,879	419,790,454	451,950,826	415,919,230	434,497,879
Receipts From Other Sources	22,345,787	7,529,894	9,865,736	10,469,108	6,345,419	6,259,923	2,964,403	2,289,808
Opening Inventory	35,117,226	37,048,364	40,280,787	38,569,882	22,314,660	21,457,099	23,486,068	24,289,965
<b>Total To Be Accounted For</b>	<b>636,200,233</b>	<b>798,319,369</b>	<b>769,329,927</b>	<b>776,055,869</b>	<b>448,450,533</b>	<b>479,667,848</b>	<b>442,369,701</b>	<b>461,077,652</b>
<b>Utilization of Receipts</b>								
Whole milk	32,347,210	32,769,633	32,395,984	32,968,000	23,044,354	24,211,362	23,660,849	24,043,558
Flavored milk & drinks	12,264,771	11,839,971	12,686,531	12,715,762	6,550,756	5,541,303	6,432,281	5,190,860
2% milk	61,410,335	62,052,533	64,348,783	65,873,370	29,647,476	31,760,273	32,039,809	33,171,529
1% milk	23,416,180	24,909,735	25,553,357	25,725,309	14,693,474	15,218,482	16,068,685	15,992,833
Skim milk	19,213,211	19,640,005	22,965,303	23,040,787	8,984,025	9,866,632	10,982,056	11,525,907
Buttermilk	1,407,808	1,473,997	1,398,601	1,441,347	420,990	446,445	404,126	450,384
Class I dispositions in area	150,059,515	152,685,874	159,348,559	161,764,575	83,341,075	87,044,497	89,587,806	90,375,071
Class I dispositions out of area	15,494,413	16,072,486	15,433,655	14,785,351	23,659,462	23,827,607	26,055,122	25,219,494
Other Class I usage	20,203,158	20,157,768	15,215,084	18,078,404	12,977,796	12,769,173	13,099,777	12,556,051
<b>Utilization by Class</b>								
Total Class I Use	185,757,086	188,916,128	189,997,298	194,628,330	119,978,333	123,641,277	128,742,705	128,150,616
Total Class II Use	53,632,454	52,816,537	49,944,401	52,681,233	45,901,460	42,195,730	30,760,802	32,710,749
Total Class III Use	158,292,461	320,349,787	318,961,705	320,868,741	94,733,530	116,684,267	110,466,807	118,554,134
Total Class IV Use	238,518,232	236,236,917	210,426,523	207,877,565	187,837,210	197,146,574	172,399,387	181,662,153
<b>Total Accounted For</b>	<b>636,200,233</b>	<b>798,319,369</b>	<b>769,329,927</b>	<b>776,055,869</b>	<b>448,450,533</b>	<b>479,667,848</b>	<b>442,369,701</b>	<b>461,077,652</b>

CLASSIFICATION OF RECEIPTS	PACIFIC NORTHWEST				ARIZONA			
	Apr	Mar	Apr	Mar	Apr	Mar	Apr	Mar
	2014	2014	2013	2013	2014	2014	2013	2013
<b>Producer milk</b>								
Class I	168,420,887	170,182,395	173,808,251	177,333,756	107,241,751	110,637,202	116,282,389	114,942,482
Class II	48,636,011	47,410,974	42,455,072	45,638,441	45,122,241	41,423,316	29,945,023	31,767,303
Class III	146,332,777	318,599,120	317,166,845	318,456,567	94,732,324	116,200,292	108,881,157	118,219,118
Class IV	215,347,545	217,548,622	185,753,236	185,588,115	172,694,138	183,690,016	160,810,661	169,568,976
<b>Other receipts</b>								
Class I	17,336,199	18,733,733	16,189,047	17,294,574	12,736,582	13,004,075	12,460,316	13,208,134
Class II	4,996,443	5,405,563	7,489,329	7,042,792	1/	1/	1/	1/
Class III	1/	1,750,667	1,794,860	2,412,174	1/	1/	1/	1/
Class IV	35,130,371	18,688,295	24,673,287	22,289,450	15,923,497	14,712,947	13,990,155	13,371,639
<b>Avg. daily producer receipts</b>	<b>19,291,241</b>	<b>24,314,229</b>	<b>23,972,780</b>	<b>23,452,157</b>	<b>13,993,015</b>	<b>14,579,059</b>	<b>13,863,974</b>	<b>14,016,061</b>
Change From Previous Year	-19.53%	3.68%	12.86%	1.11%	0.93%	4.02%	-2.30%	-0.04%
<b>Avg. daily Class I use</b>	<b>6,191,903</b>	<b>6,094,069</b>	<b>6,333,243</b>	<b>6,278,333</b>	<b>3,999,278</b>	<b>3,988,428</b>	<b>4,291,424</b>	<b>4,133,891</b>
Change From Previous Year	-2.23%	-2.93%	-0.82%	-6.07%	-6.81%	-3.52%	-0.37%	-3.21%

1/ Restricted - Included with Class IV.



The U.S. Department of Agriculture (USDA) prohibits discrimination in all its programs and activities on the basis of race, color, national origin, age, disability, and where applicable, sex, marital status, familial status, parental status, religion, sexual orientation, genetic information, political beliefs, reprisal, or because all or part of an individual's income is derived from any public assistance program. (Not all prohibited bases apply to all programs.) Persons with disabilities who require alternative means for communication of program information (Braille, large print, audiotape, etc.) should contact USDA's TARGET Center at (202) 720-2600 (voice and TDD). To file a complaint of discrimination, write to USDA, Director, Office of Civil Rights, 1400 Independence Avenue, S.W., Washington, D.C. 20250-9410, or call (800) 795-3272 (voice) or (202) 720-6382 (TDD). USDA is an equal opportunity provider and employer.

## Contact Information

### Bothell Office

1930 220th Street SE, Suite 102  
 Bothell, Washington 98021  
 Phone: (425) 487-6009  
 Fax: (425) 487-2775  
 E-mail:  
[fmmaseattle@fmmaseattle.com](mailto:fmmaseattle@fmmaseattle.com)

### Phoenix Office

4835 E Cactus Road, Suite 365  
 Scottsdale, Arizona 85254  
 Phone: (602) 547-2909  
 Fax: (602) 547-2906  
 E-mail: [ma@fmma.net](mailto:ma@fmma.net)

Visit the MA website  
[www.fmmaseattle.com](http://www.fmmaseattle.com)

## FEDERAL ORDER STATISTICS FOR APRIL

Federal Order Name (Number)	Producer Deliveries	Class I Receipts	Class I Utilization	Class I Price	Uniform Price
	<i>- million pounds -</i>			<i>- per cwt (at location) -</i>	
Northeast (FO 1)	2,153.2	740.0	34.37%	\$26.90	\$25.46
Appalachian (FO 5)	493.5	307.3	62.26%	\$27.05	\$26.31
Florida (FO 6)	236.1	199.0	84.29%	\$29.05	\$28.45
Southeast (FO 7)	496.2	327.0	65.90%	\$27.45	\$26.73
Upper Midwest (FO 30)	2,638.9	299.3	11.34%	\$25.45	\$24.41
Central (FO 32)	1,226.6	402.1	32.79%	\$25.65	\$24.20
Mideast (FO 33)	1,420.8	512.0	36.03%	\$25.65	\$24.48
Pacific Northwest (FO 124)	578.7	168.4	29.10%	\$25.55	\$24.03
Southwest (FO 126)	796.9	364.9	45.80%	\$26.65	\$25.12
Arizona (FO 131)	419.8	107.2	25.55%	\$26.00	\$24.43

For links to Market Administrator's webpages, see [www.fmmaseattle.com/dairyreferences.htm](http://www.fmmaseattle.com/dairyreferences.htm).